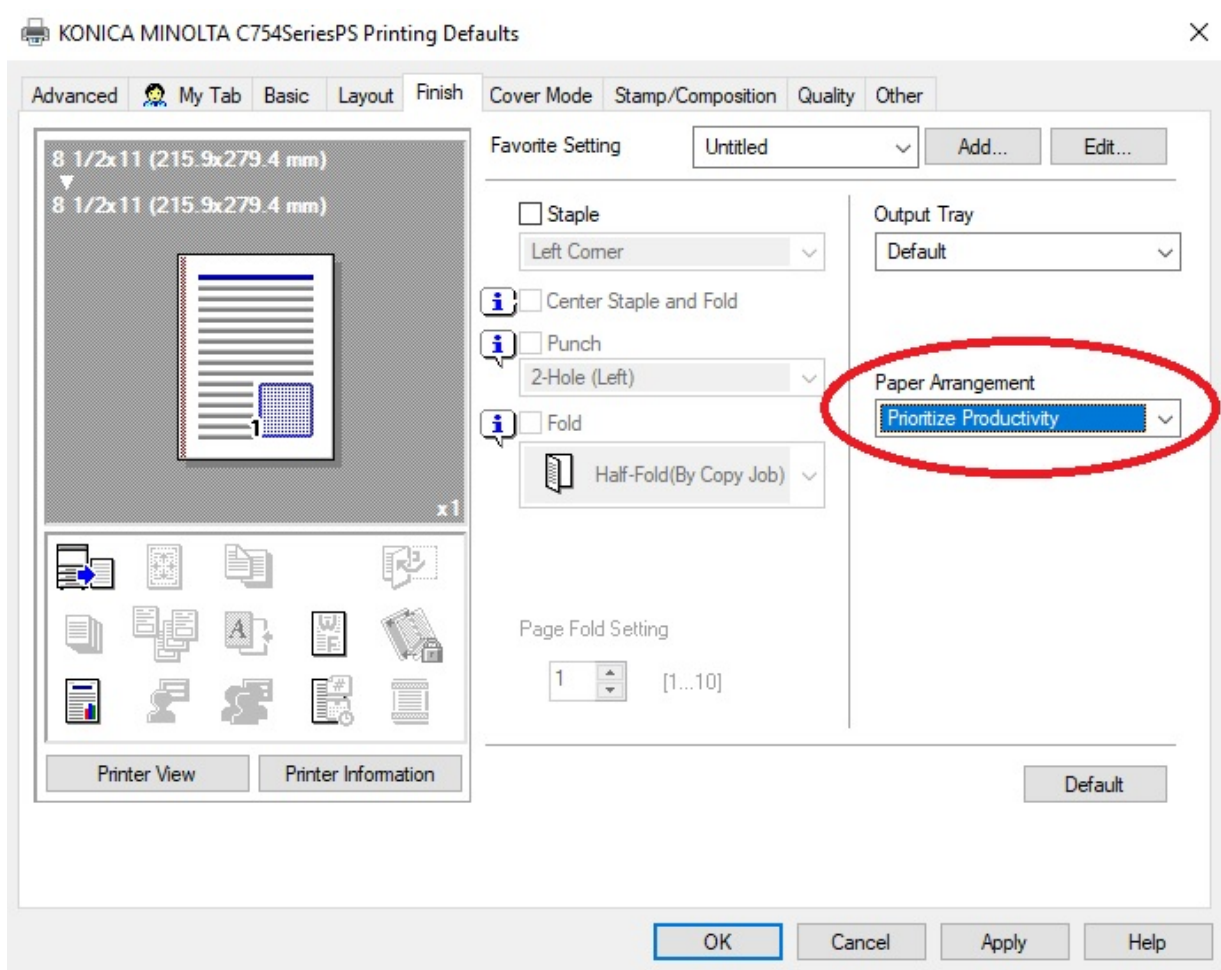


Procedure to Correct Slow Printing on Emperon MFPs

Problem: When printing large documents (50 pages or more), copiers can take 15 minutes or more to start printing the job after first receiving data from the computer (Blue data light flashing).

Solution: Make the following changes to the copier, and the print driver.

1. Utility / User Settings / Printer Settings / Basic Settings / (Arrow Down) / Binding Direction Adjustment: Productivity Priority – (Arrow Down) / Spool Print Jobs in HDD before RIP: OFF
2. Utility / Administrator Settings / System Settings / Output Settings / Print/Fax Output Settings / Set both to “Page Print”
3. In the print driver, change the “Printing Preferences” and the “Printing Defaults” as follows:
Finishing Tab / Paper Arrangement: Prioritize Productivity



After making these changes, the first page should start printing as soon as the copier receives it. This information was provided by KMBS.