

MAC OS 10.10.x Driver Installation Guide



The print driver installation for MAC OS X is a ***two part*** process.

The ***first*** step is to download and install the correct driver package.

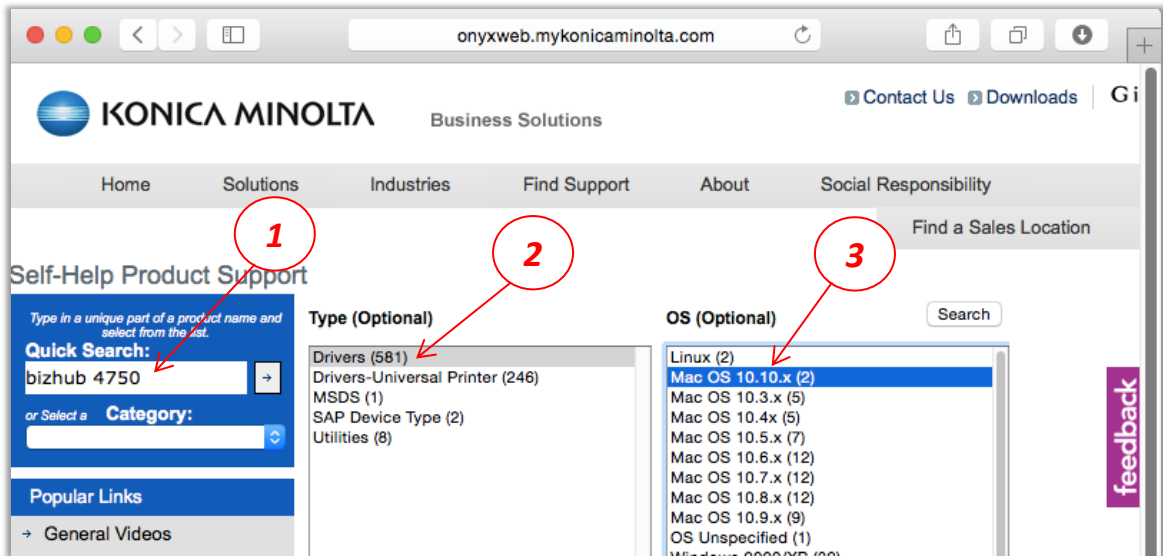
The ***second*** step is to add & configure a printer for *MAC OS 10.10.x*

Caltronics Business Systems

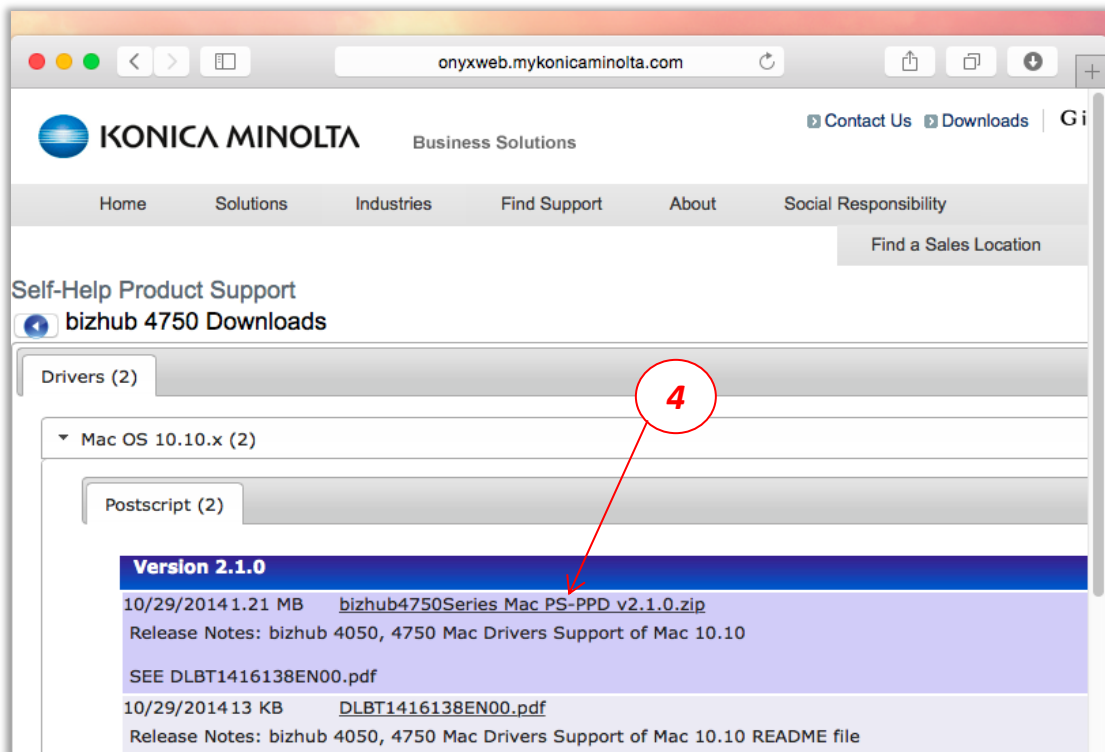
Part 1

Installing the driver software package

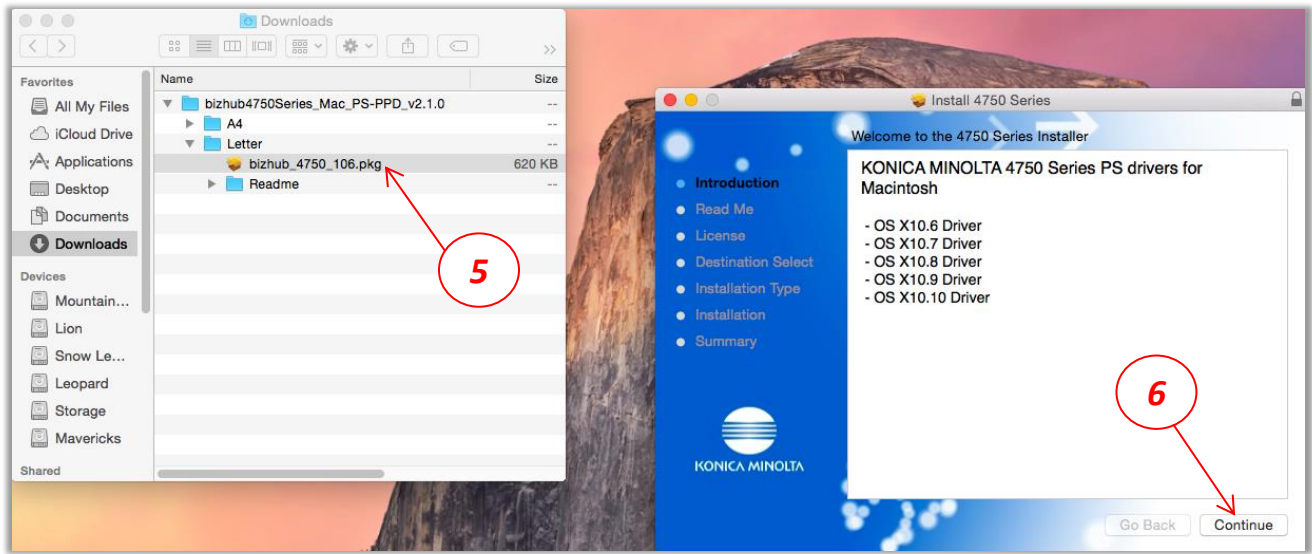
- 1) Go to <http://onyxweb.mykonicaminolta.com/OneStopProductSupport>
- 2) Enter the Bizhub Model number in the “Quick Search” window,
- 3) Click “Drivers”, then select **MAC OS 10.10.x** – aka Yosemite, then select “Search”



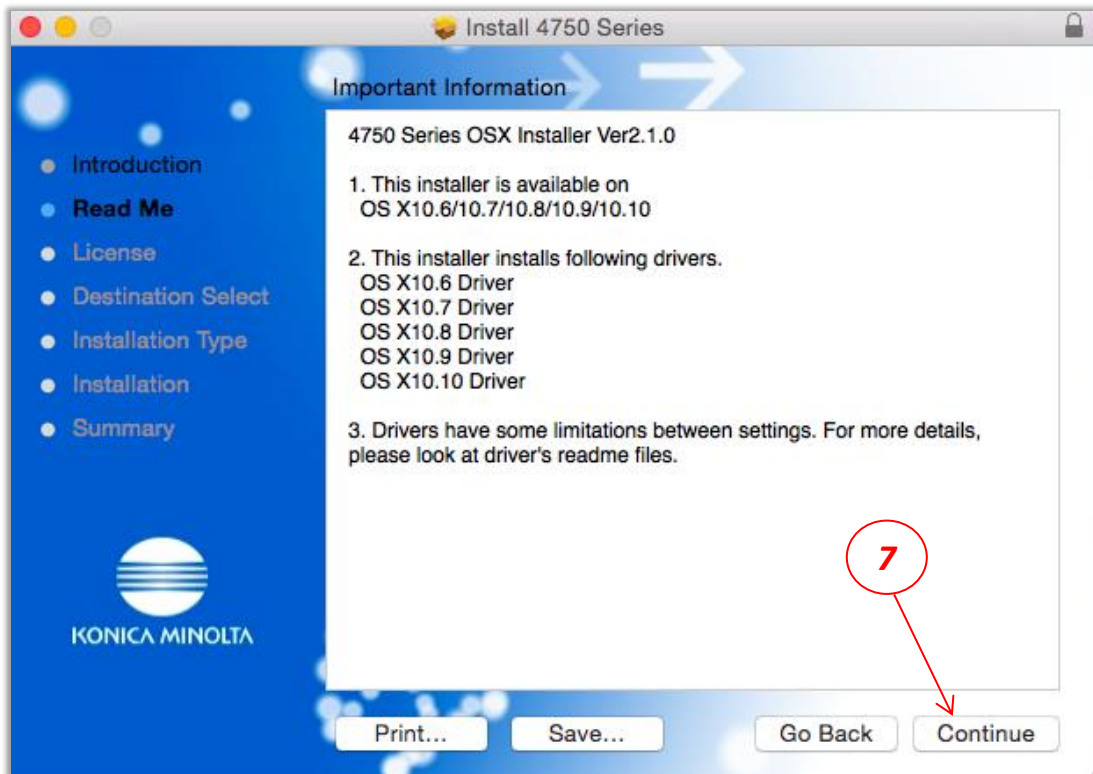
- 4) Click the correct driver to download. (Note: choose the latest version if multiple options are visible)



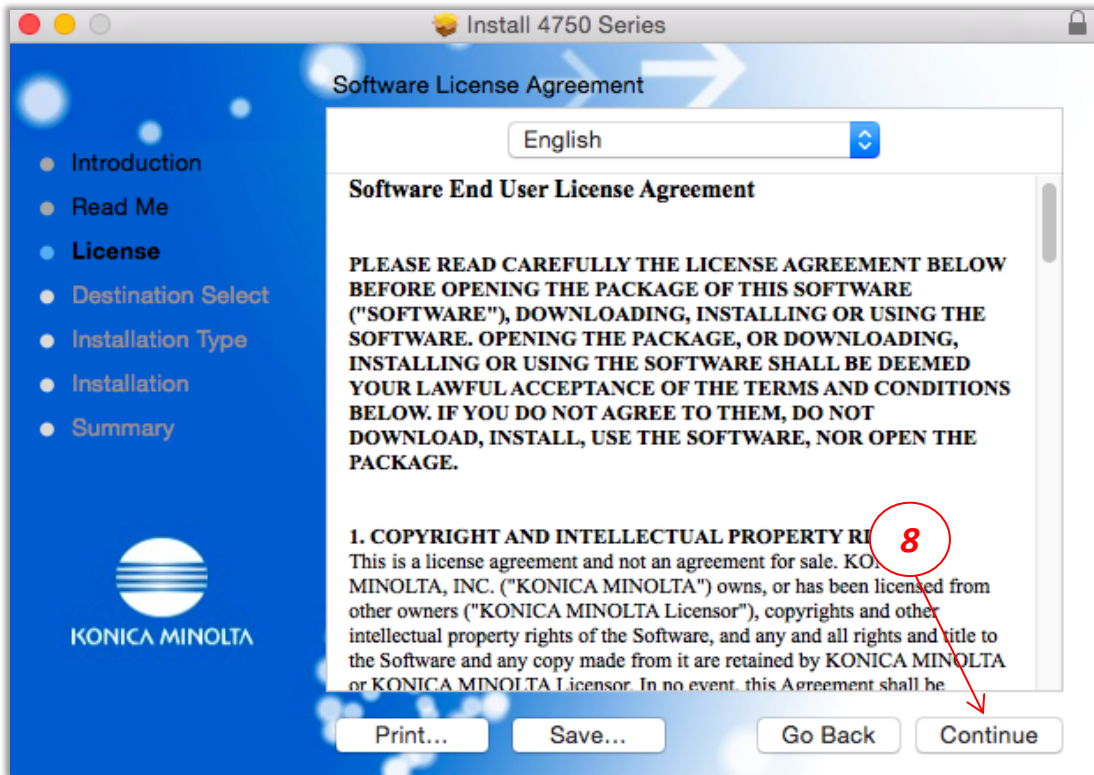
- 5) Locate the downloaded PPD, traverse the PPD to the **Letter** folder, and open the **.pkg** file
- 6) Select **Continue** on the installer “Welcome” window



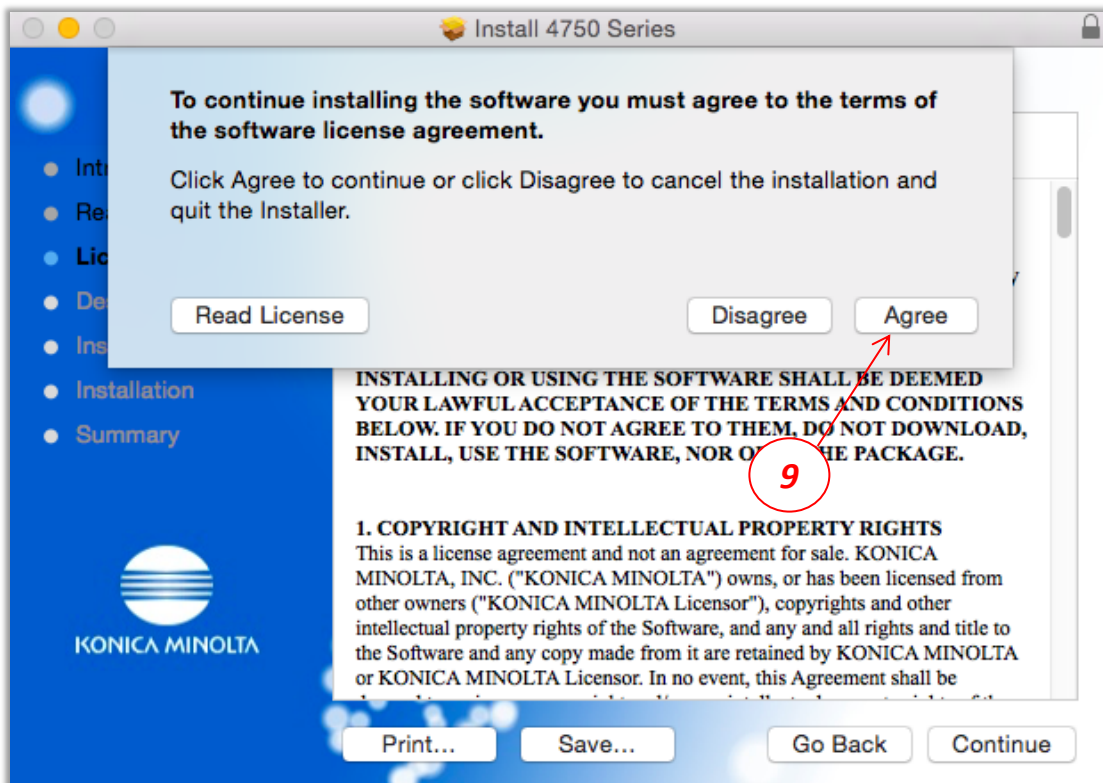
- 7) Select **Continue** on the “Important Information” window



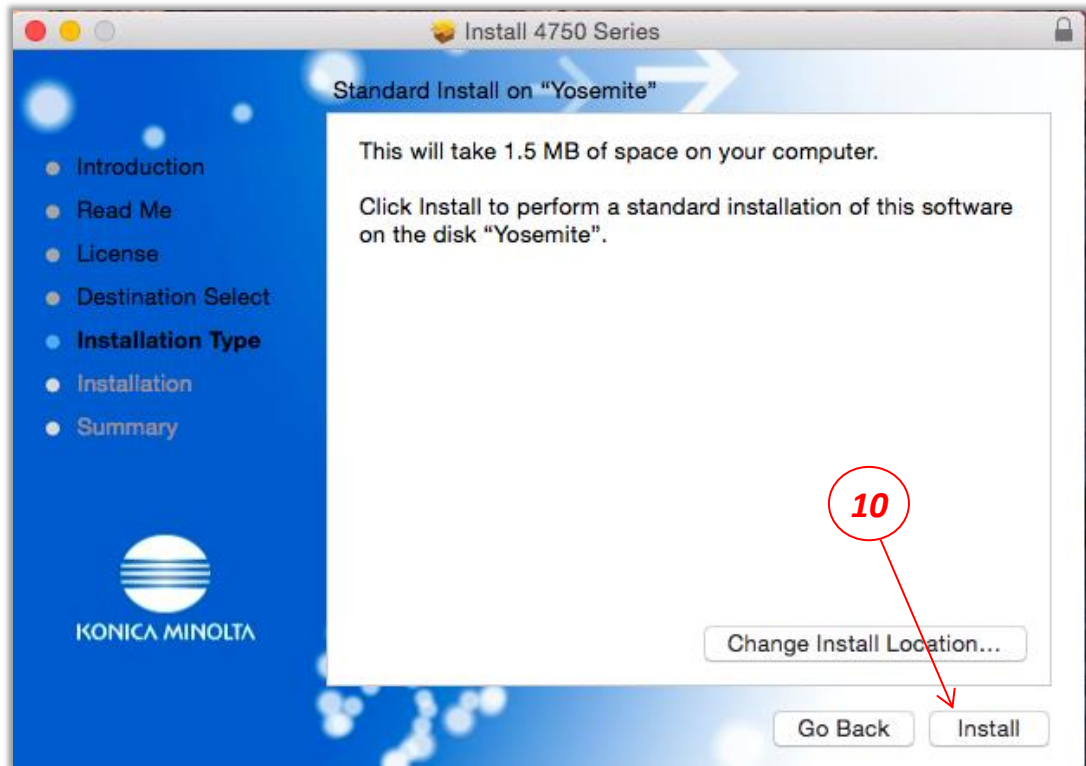
8) Click **Continue** on the “License agreement” window



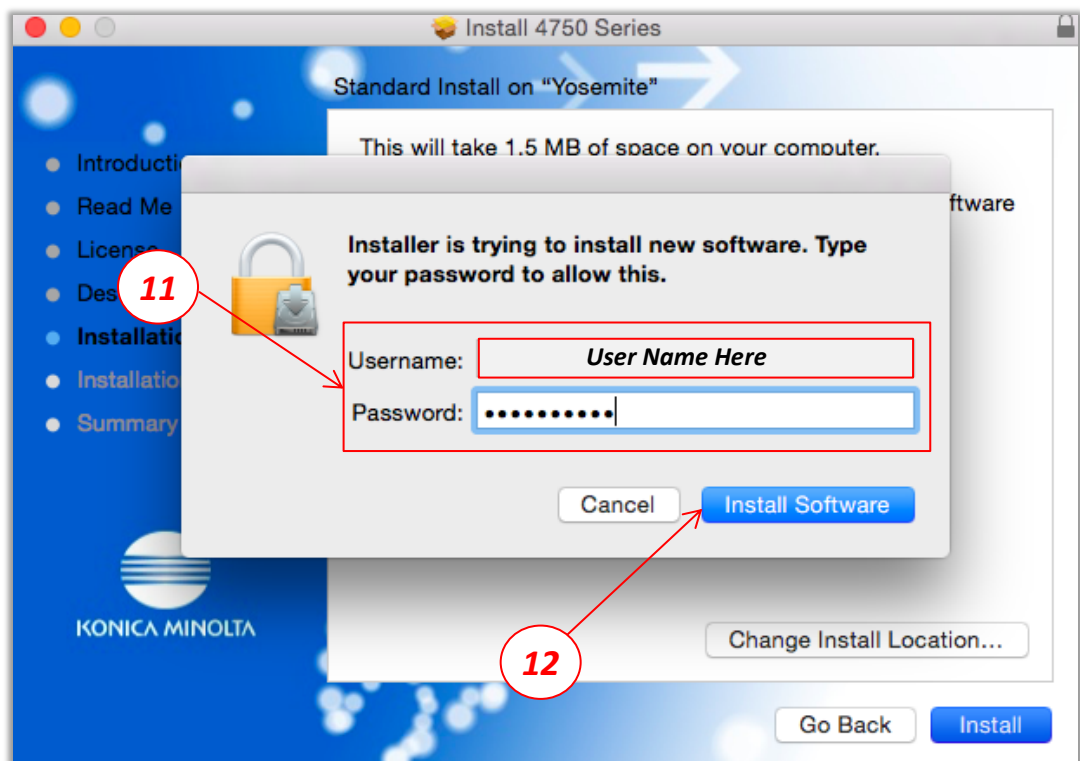
9) Click **Agree** on the “License popup” window



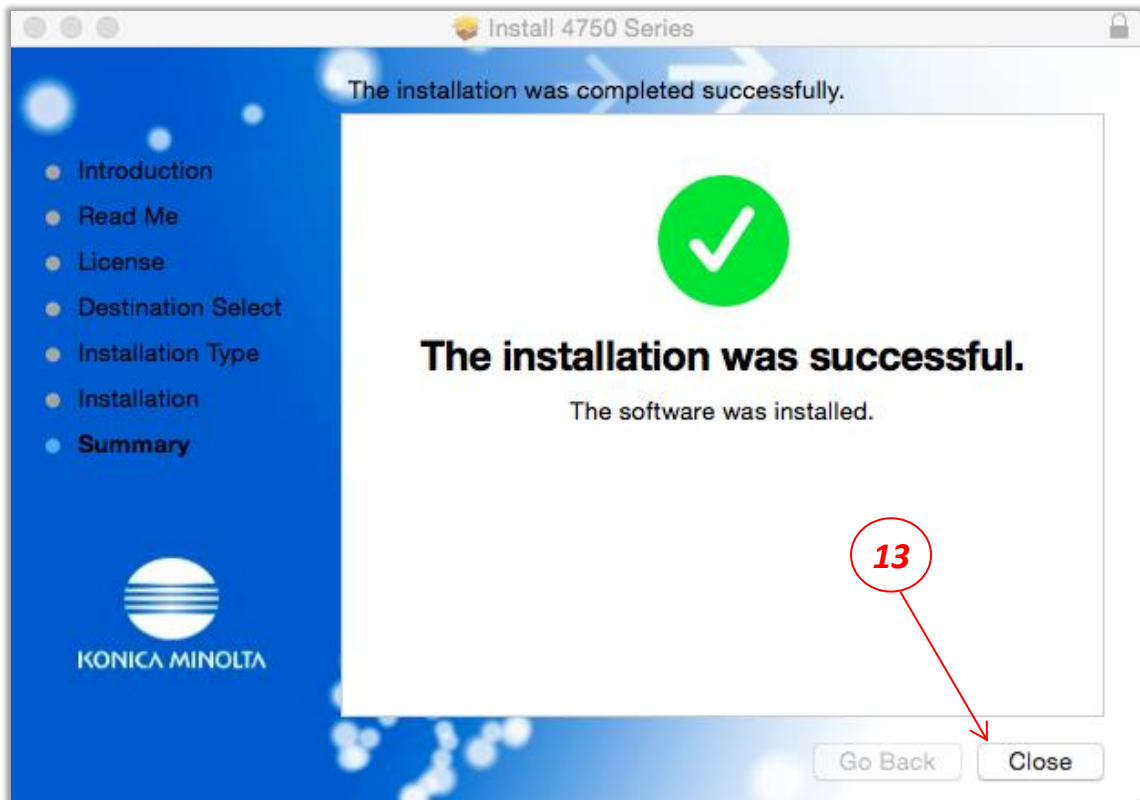
10) From the “Standard Install window”, click **Install**



- 11) When prompted, enter your **Username & Password**
- 12) To begin the installation process Select **"Install Software"**.



13) Select **Close** to complete the driver portion of the installation.



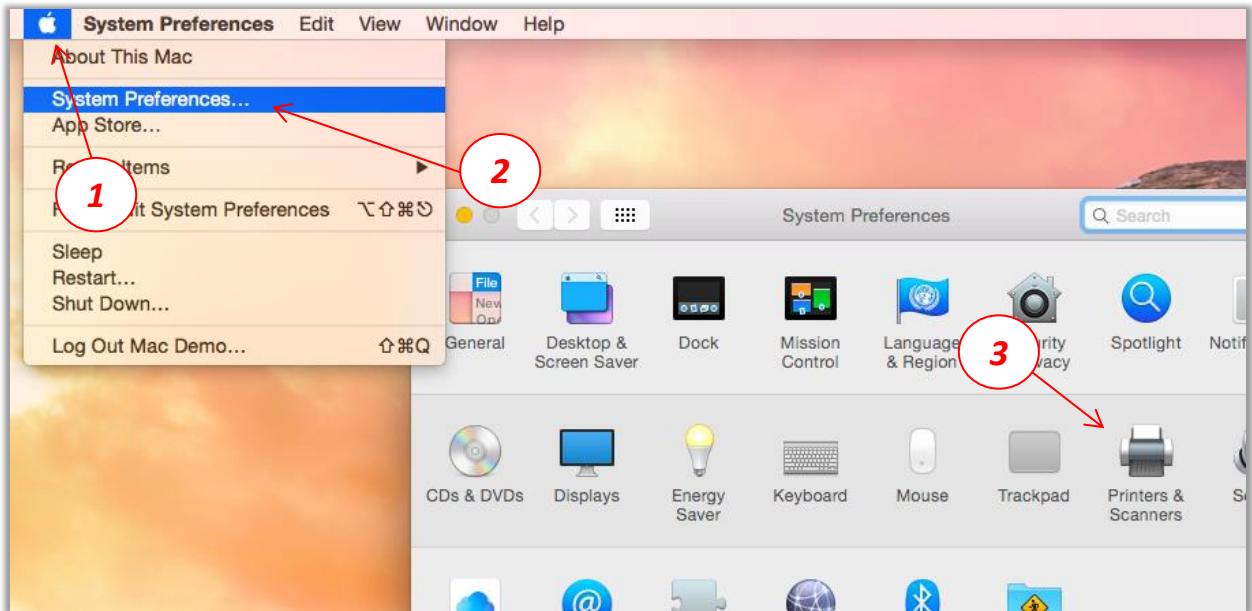
Your driver files should now be installed and ready for the next step of adding a printer.

Please proceed to the next page to add the new printer for use with MAC OS 10.10.x

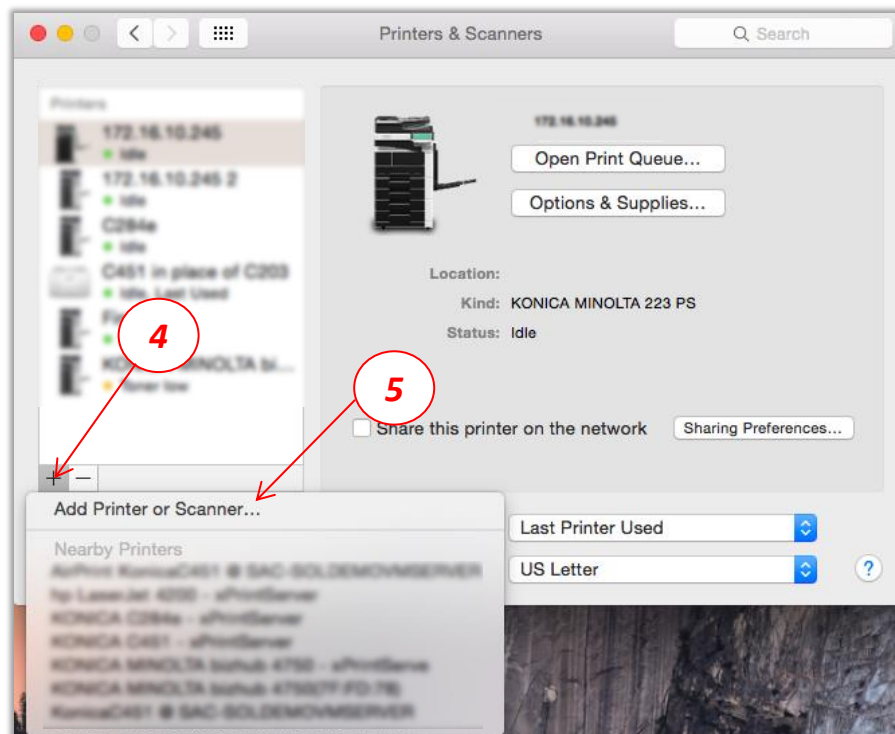
Part 2

Adding a new printer for use with the MAC OS

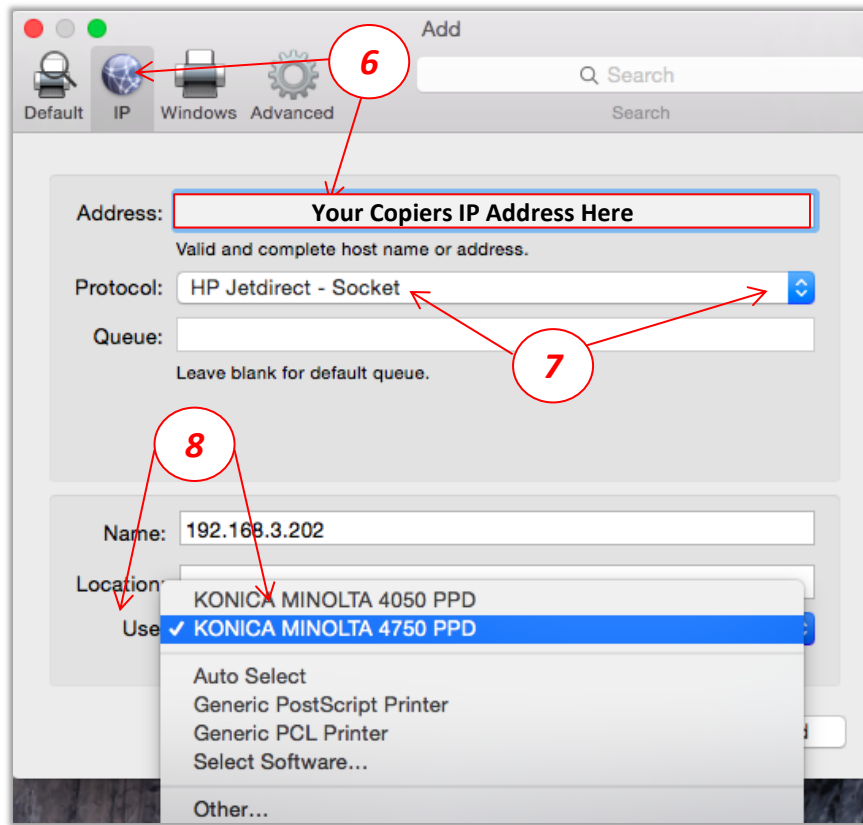
- 1) Choose **Command Apple**
- 2) Select **System Preferences**
- 3) Select **Printers & Scanners**



- 4) Select the **“+”** sign
- 5) Choose **“Add Printer or Scanner”**

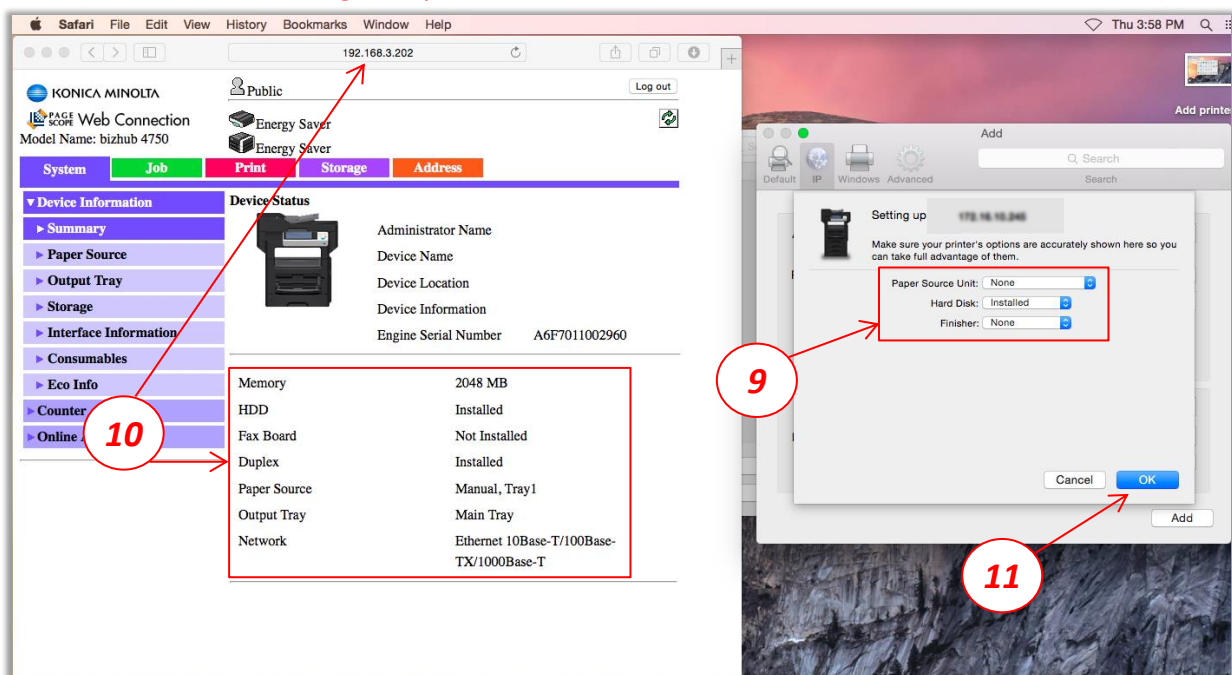


- 6) Select **IP**, then enter the **Address** of the copier to set-up
- 7) Change the Protocol to **HP Jetdirect – Socket**
- 8) Select **Use**, by default the drivers installed in the first section should be now visible

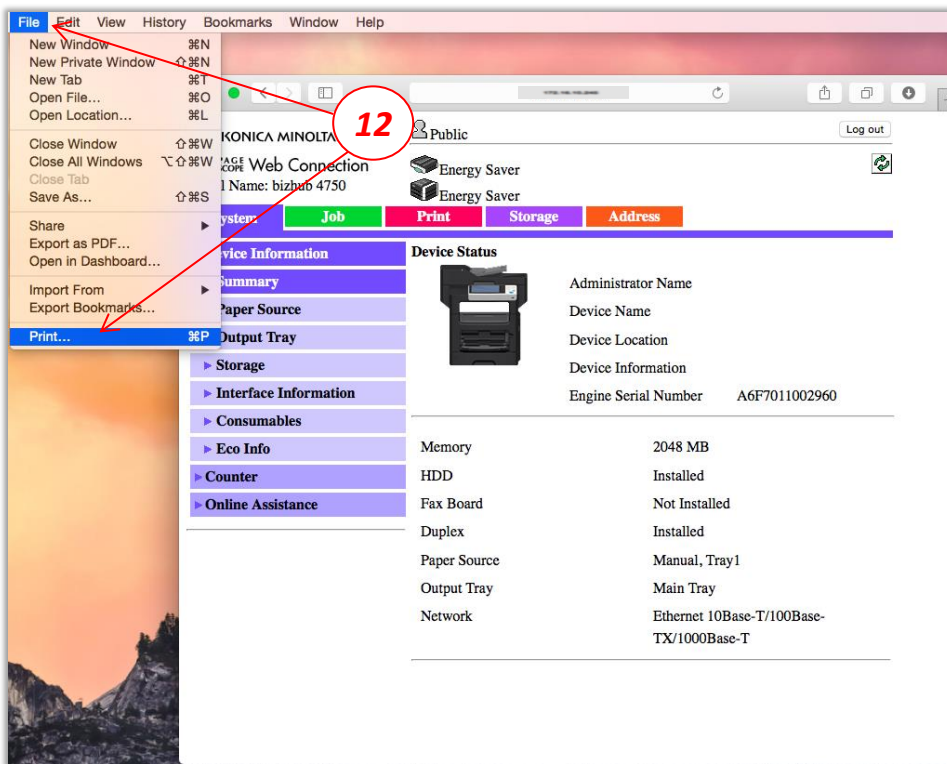


- 9) On the *Options & Supplies* window, modify, to match the printer's installed options.
- 10) Information can be found by entering the IP address of the copier in a web browser.
- 11) Select **OK**.

(After the unit is configured, you should be returned to the "Printers & Scanners" window.)



12) From any open program, select **File – then Print**



13) Select the newly installed printer

14) Set basic print options here

15) To select additional printing options, Select the *Program Name*

16) Use these options to make desired printing changes

17) Select **"Print"** to test the printing ability of the new driver setup.

