

## *Print Driver Installation*

**In this video, we will go over how to install print drivers on  
a Windows XP computer**

## *Print Driver Installation*

**There are two ways to install the print drivers:**

**1. From the CD that came with the machine**

**-or-**

**2. By downloading the drivers from the Internet**

*Print Driver Installation*

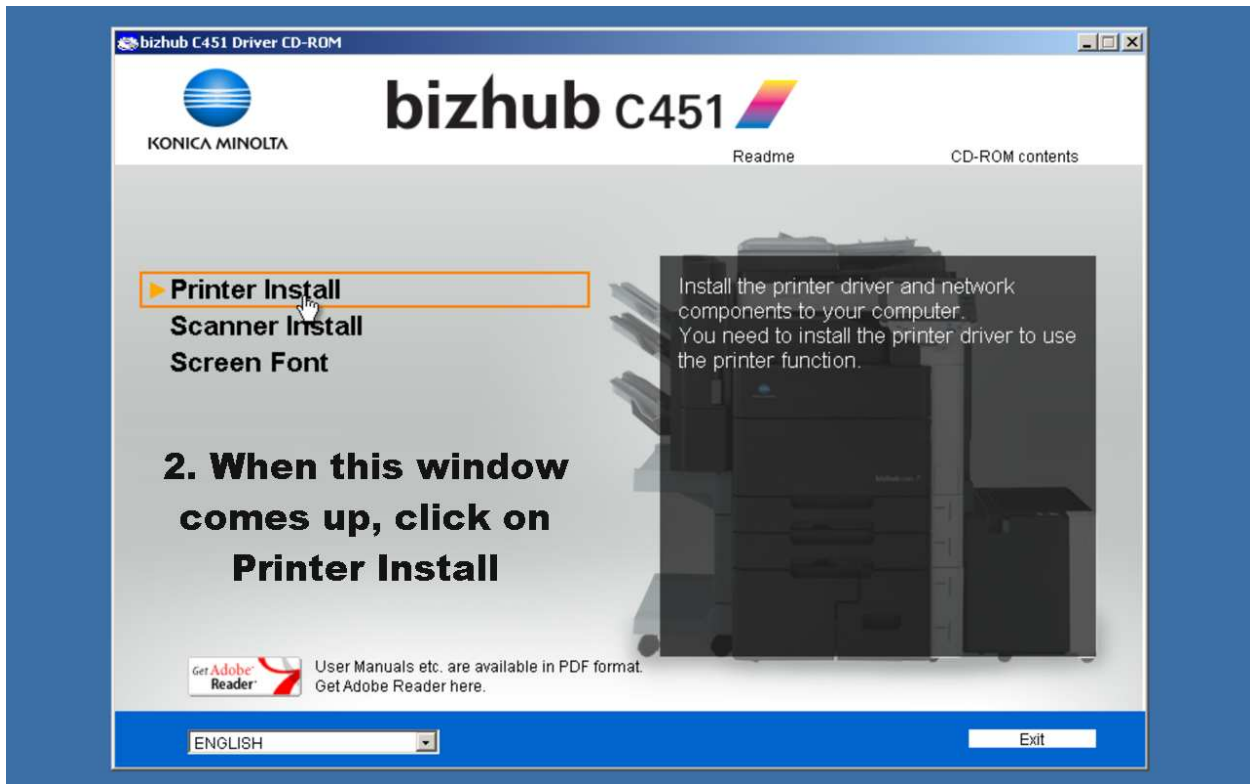
**This video will go over driver installation from the CD.  
Please refer to "DriverDownload" .avi/.pdf for details on  
downloading the drivers from Konica Minolta's website.**

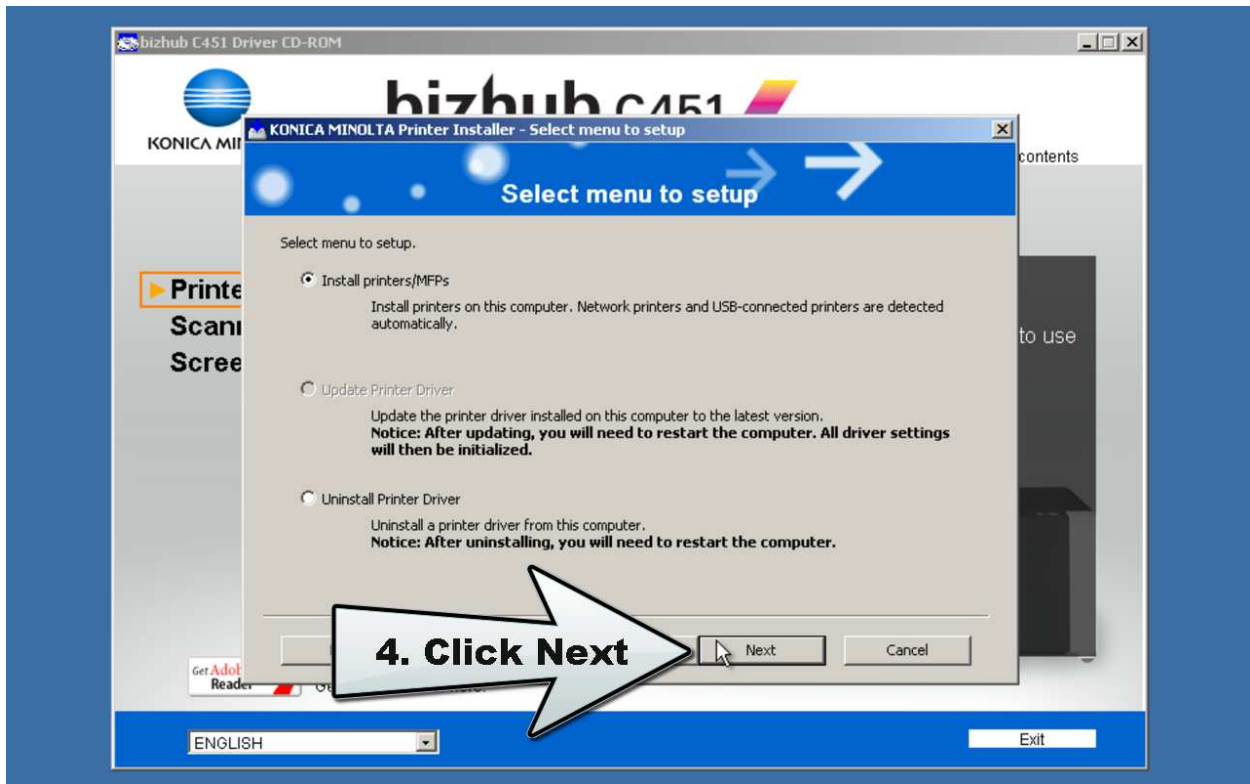
*Print Driver Installation*

**1. Place CD in the computer's CD-ROM drive.**

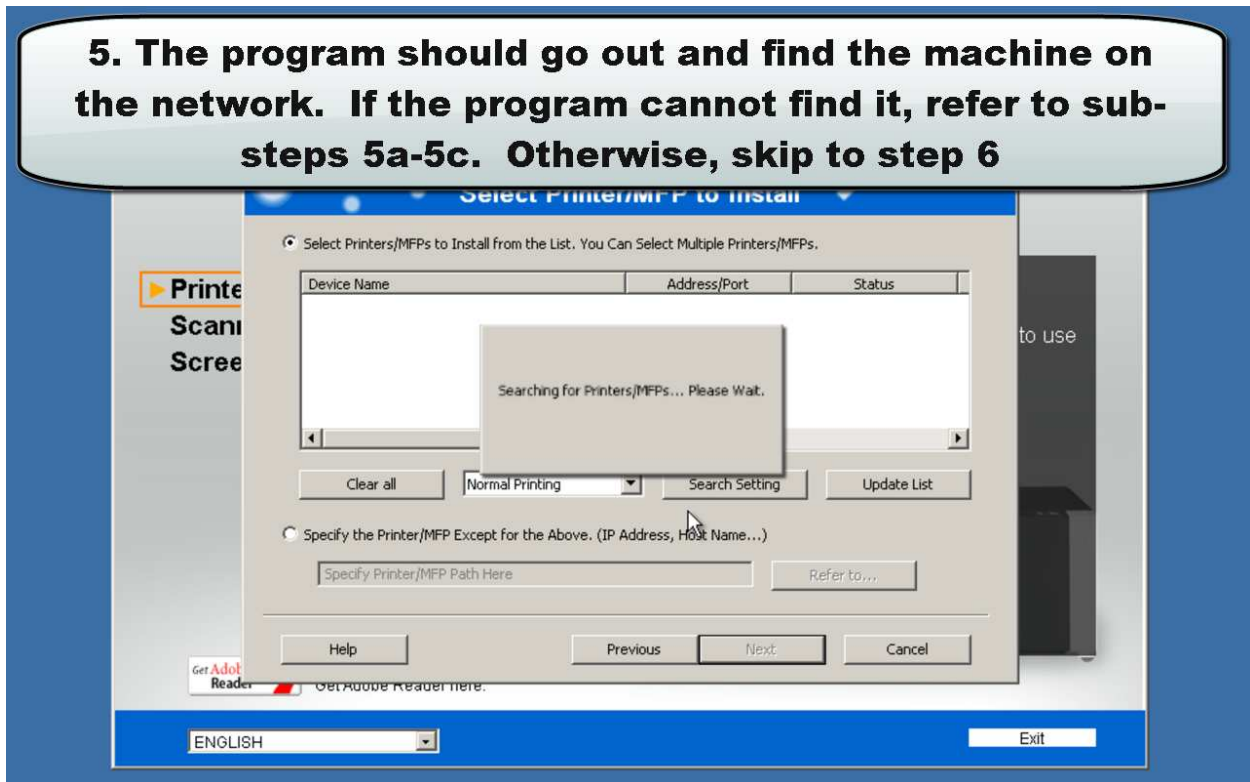
**The installation program should auto-run.**

**In this example, we will be installing Bizhub C451 drivers.**

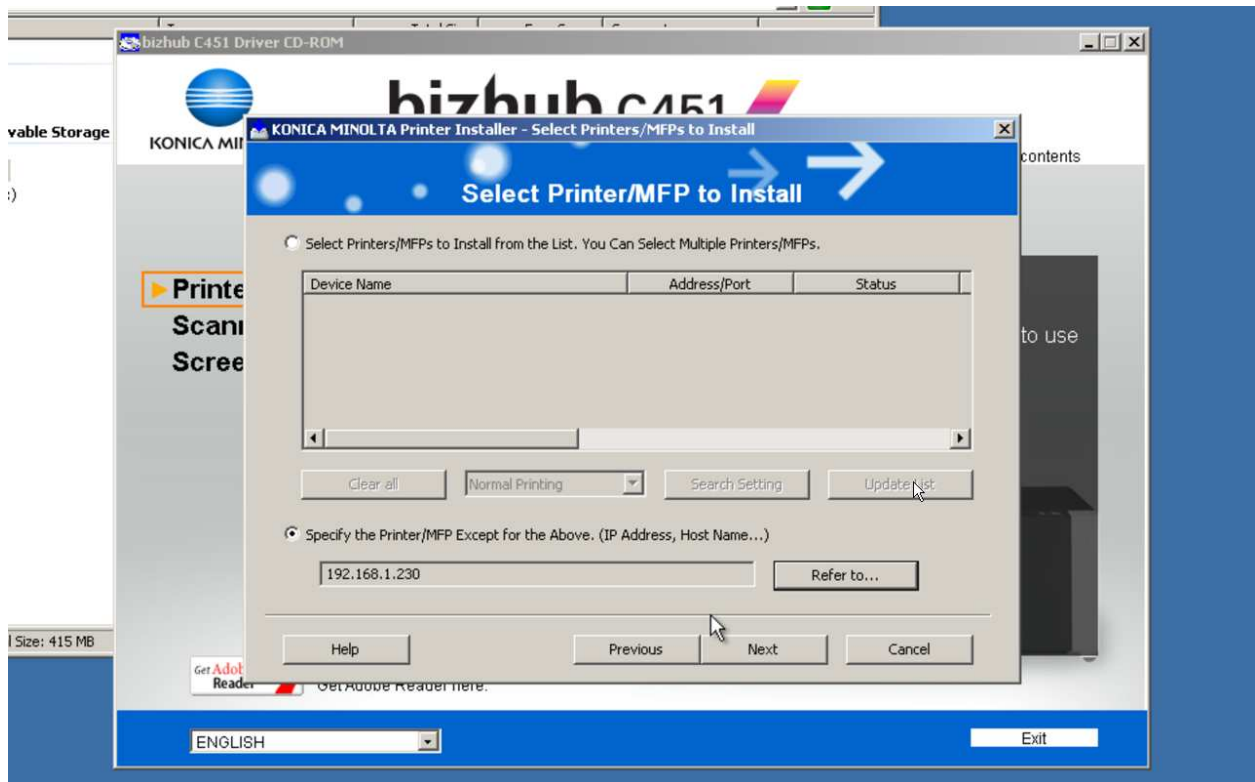
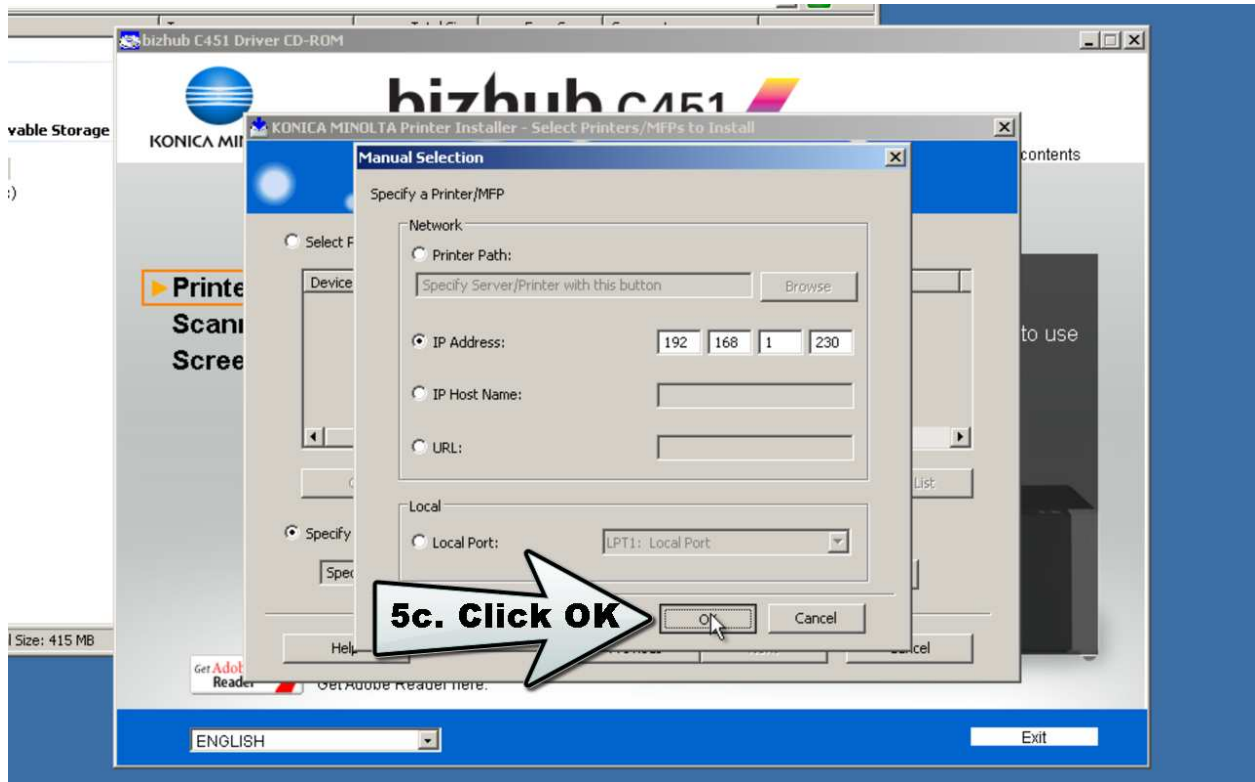


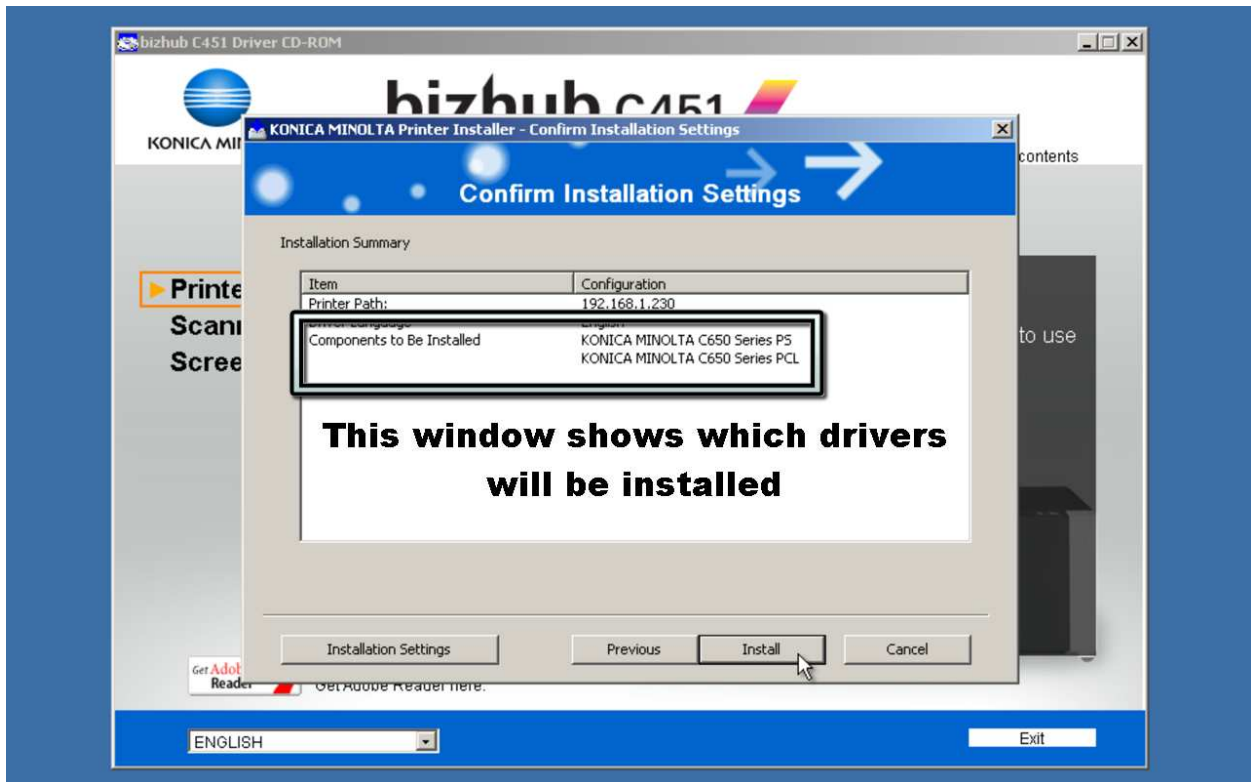
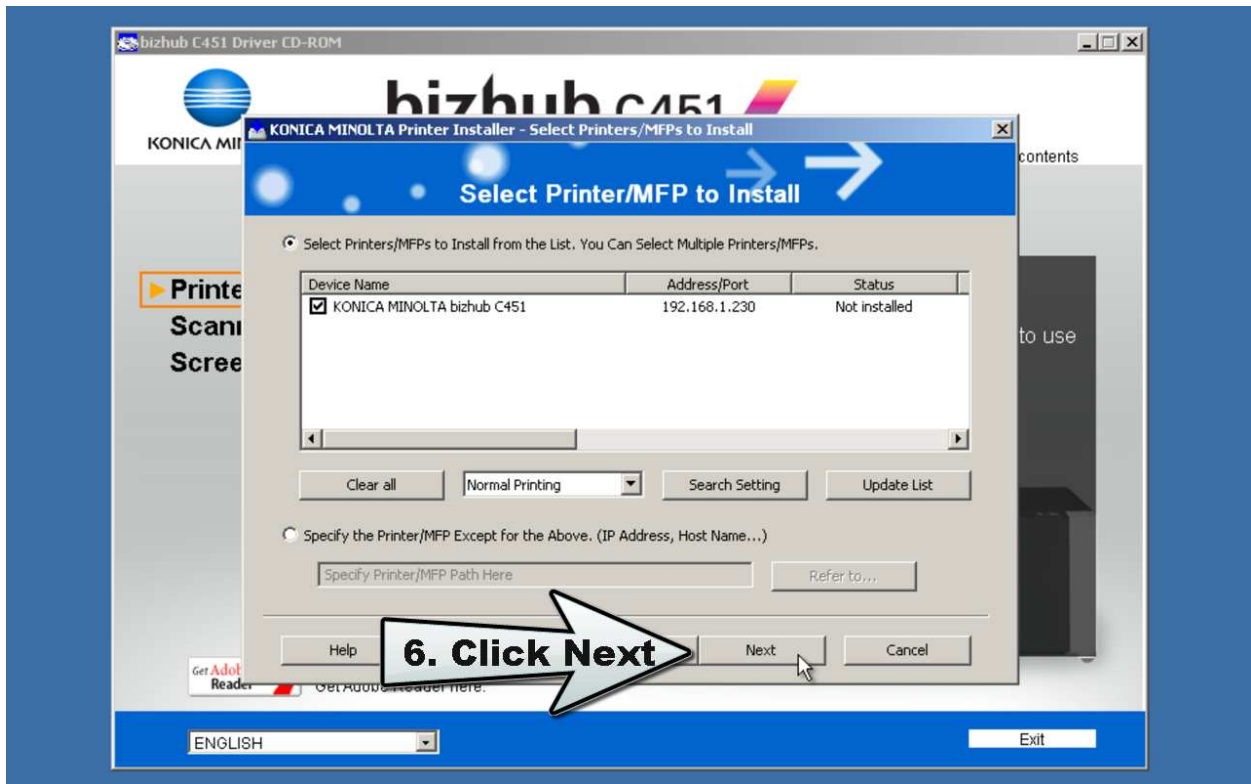


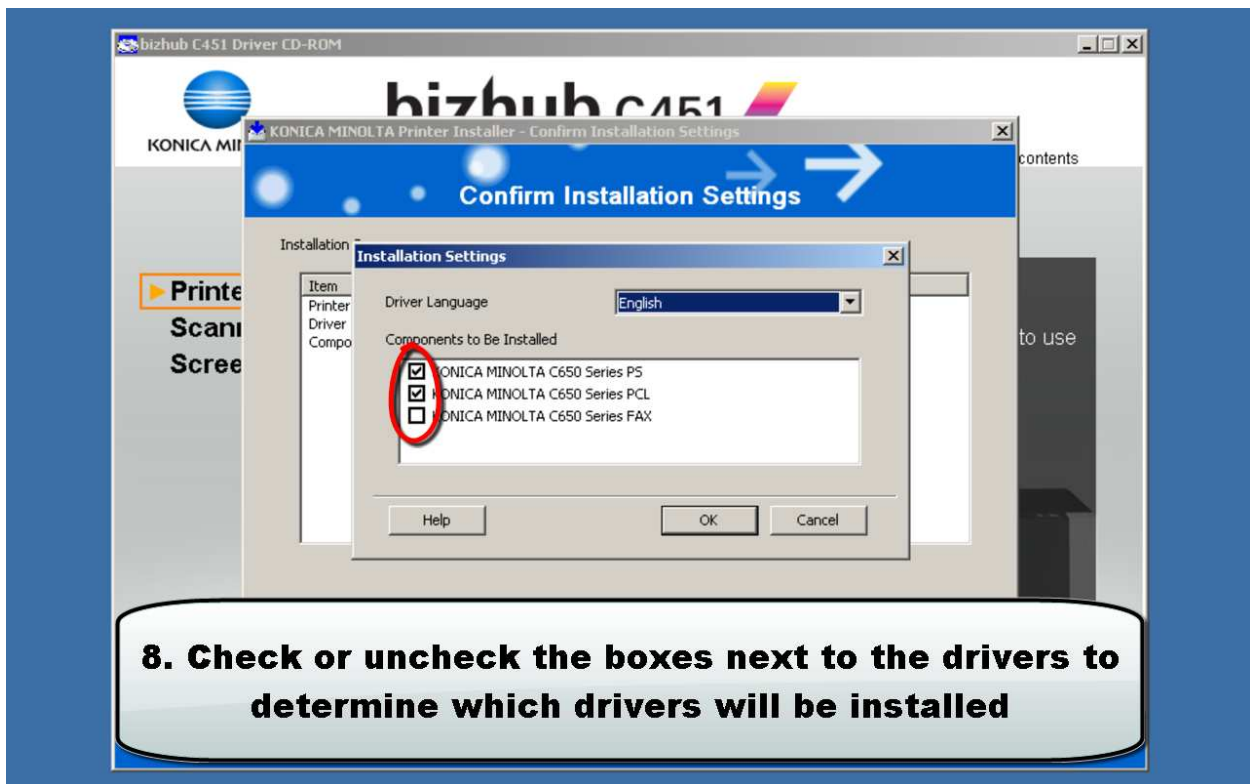
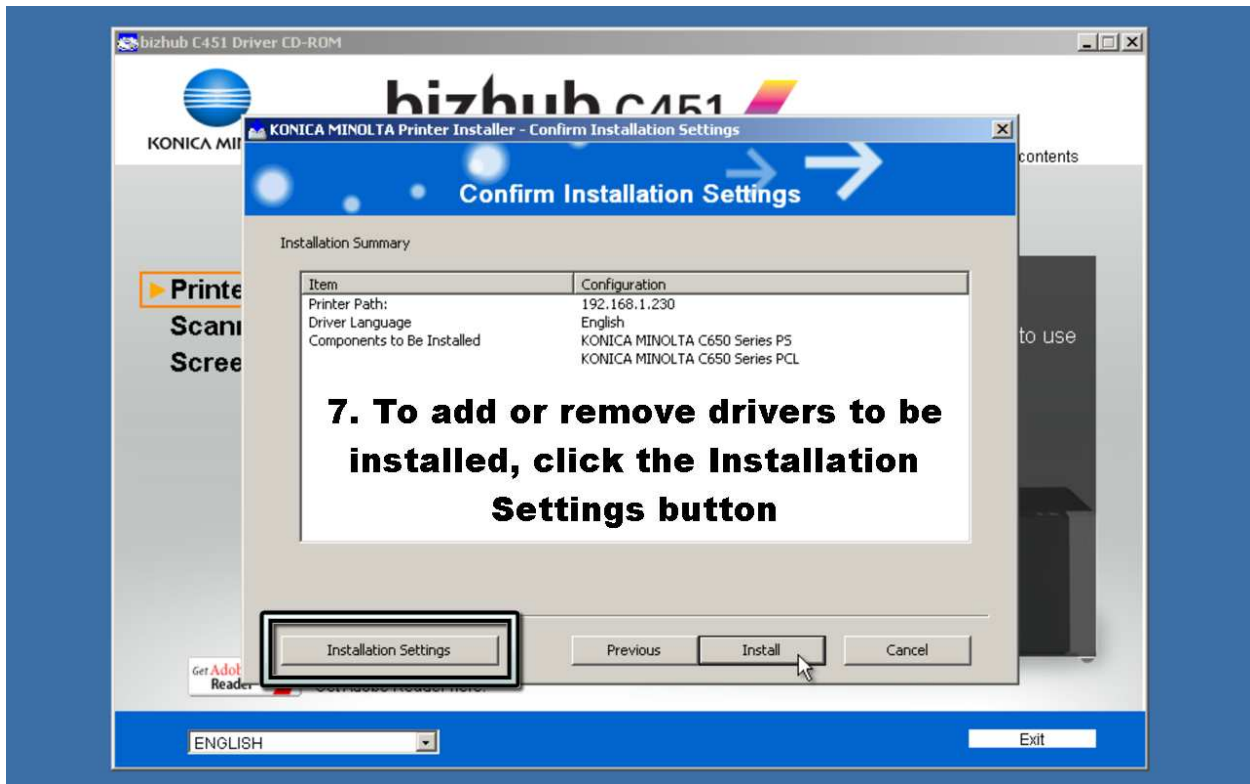
**5. The program should go out and find the machine on the network. If the program cannot find it, refer to sub-steps 5a-5c. Otherwise, skip to step 6**



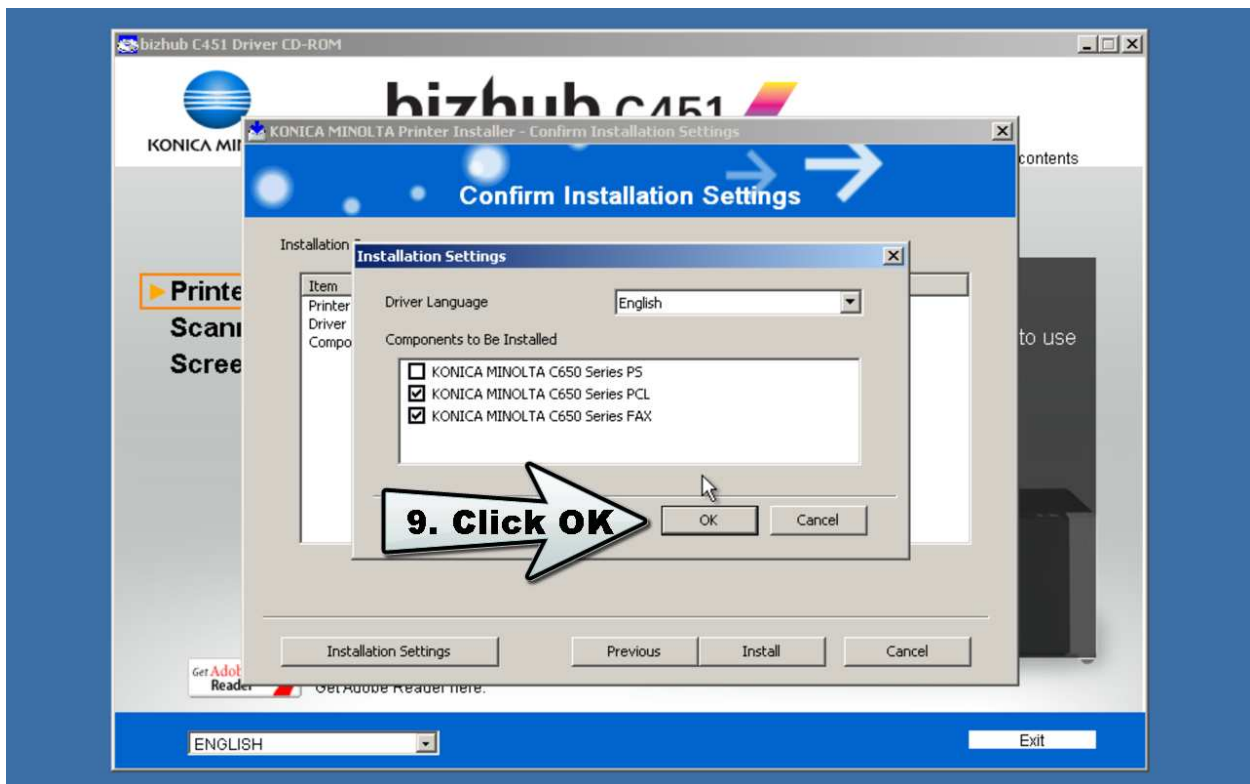
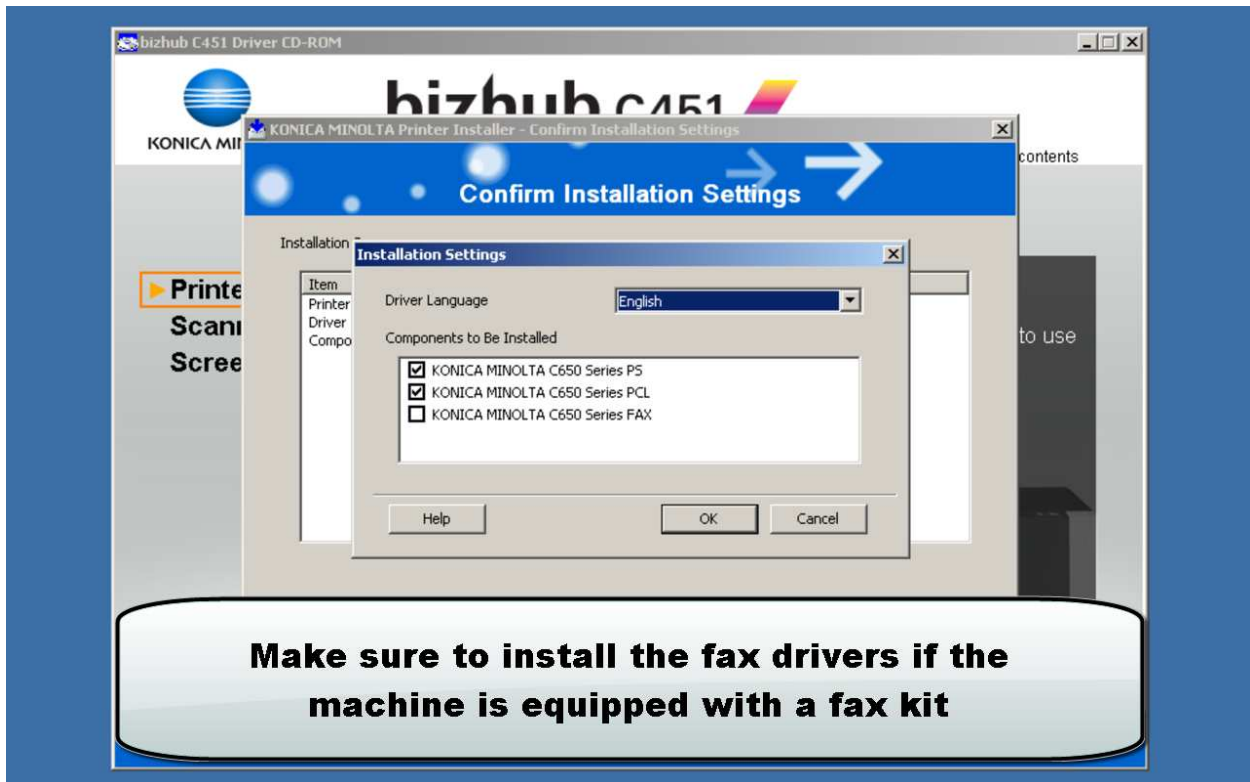


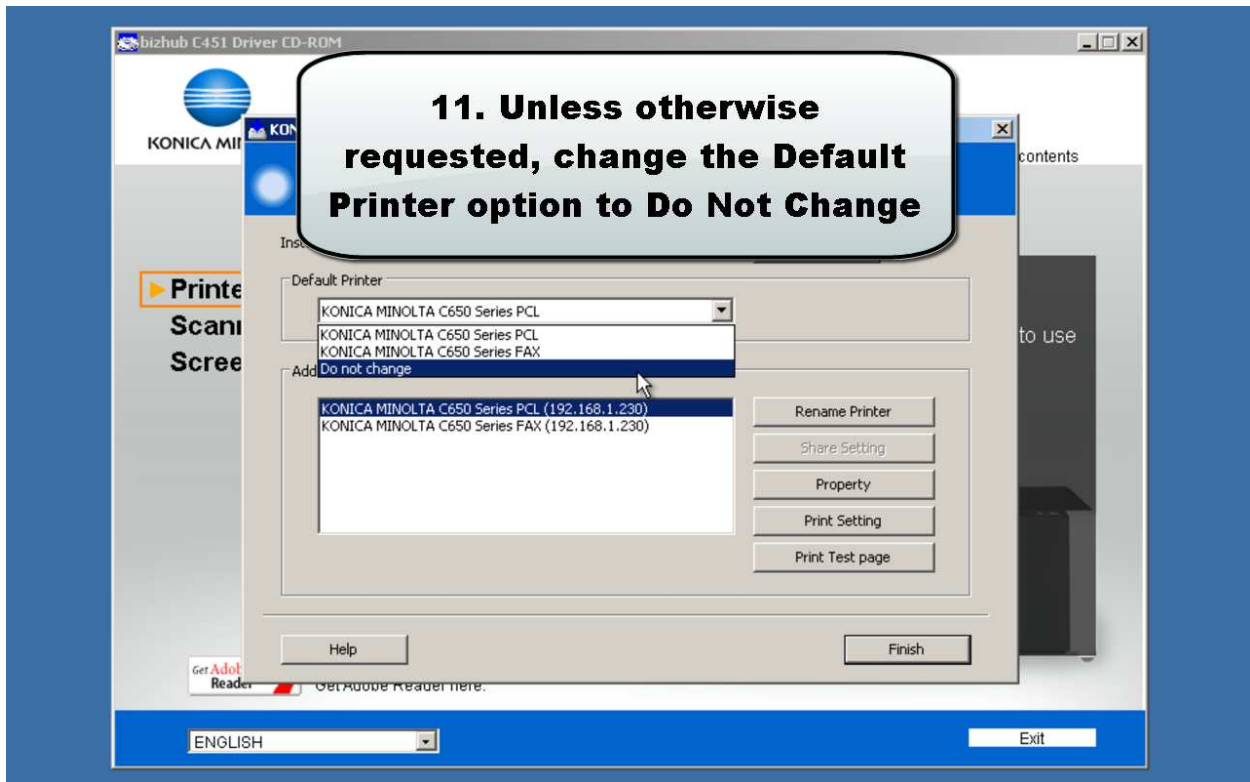
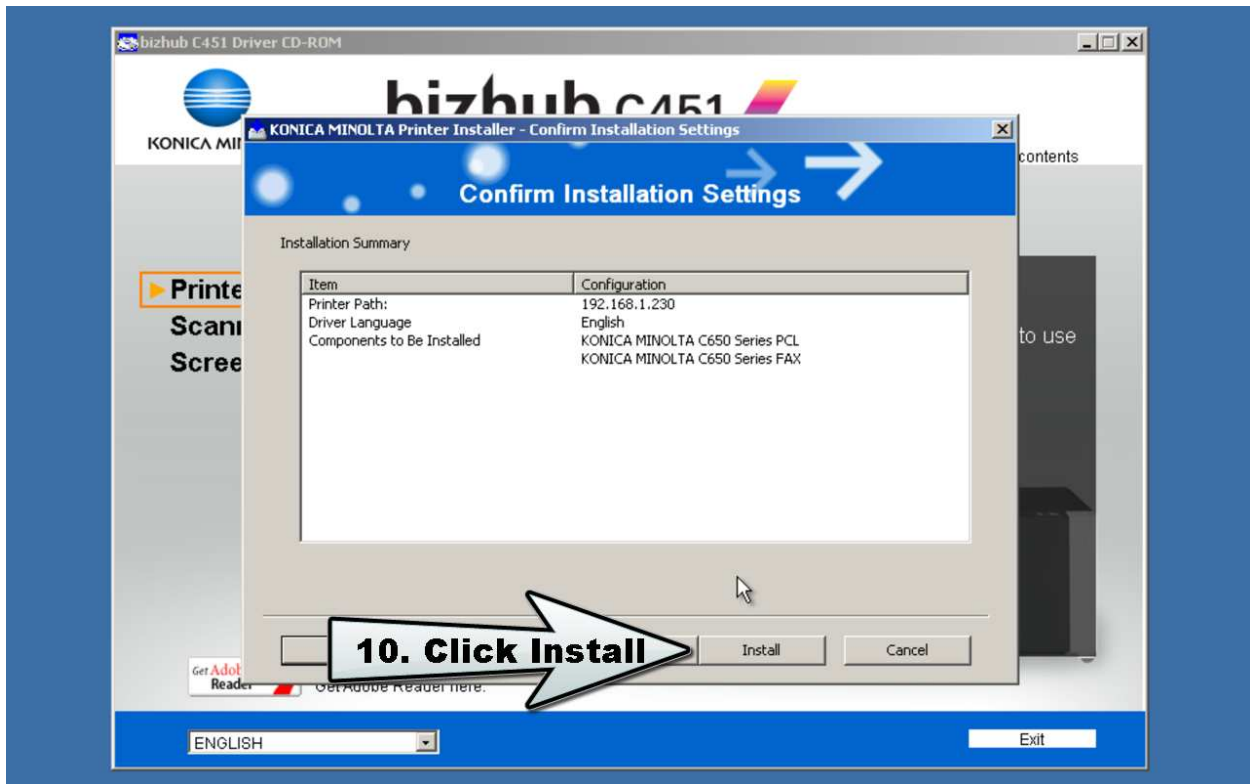


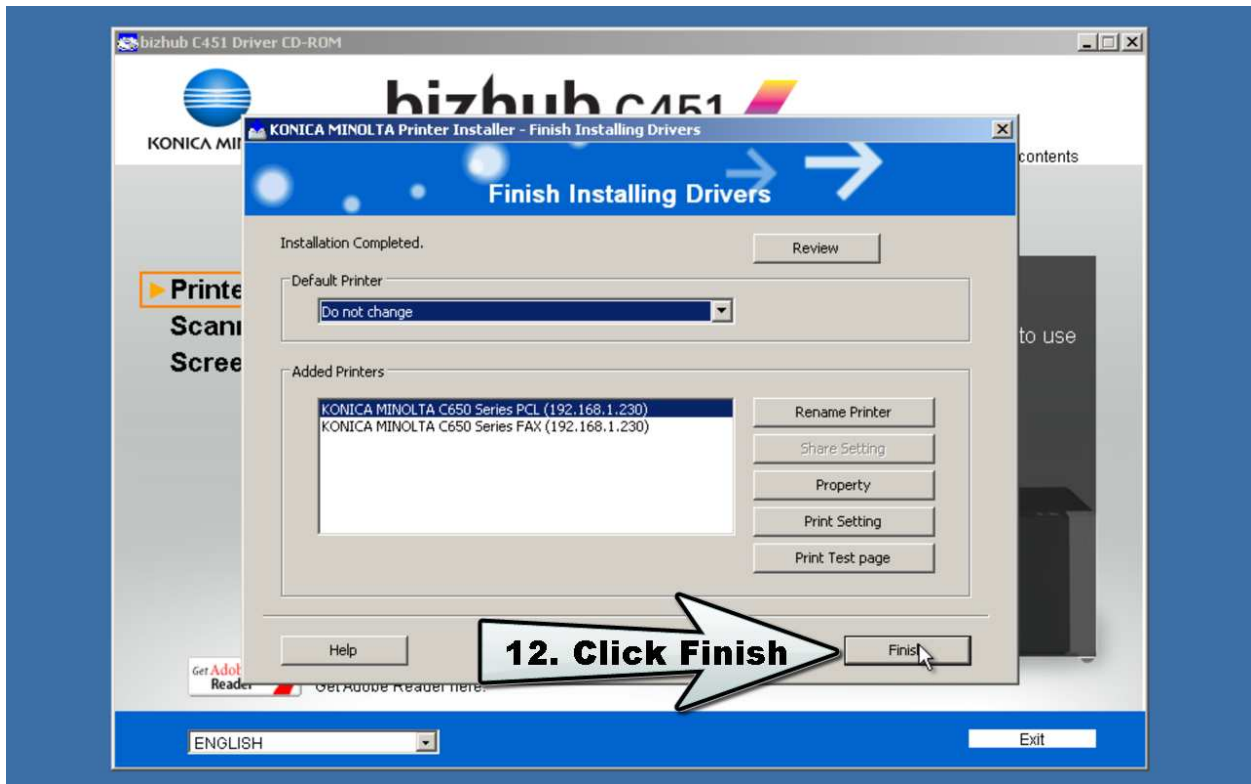






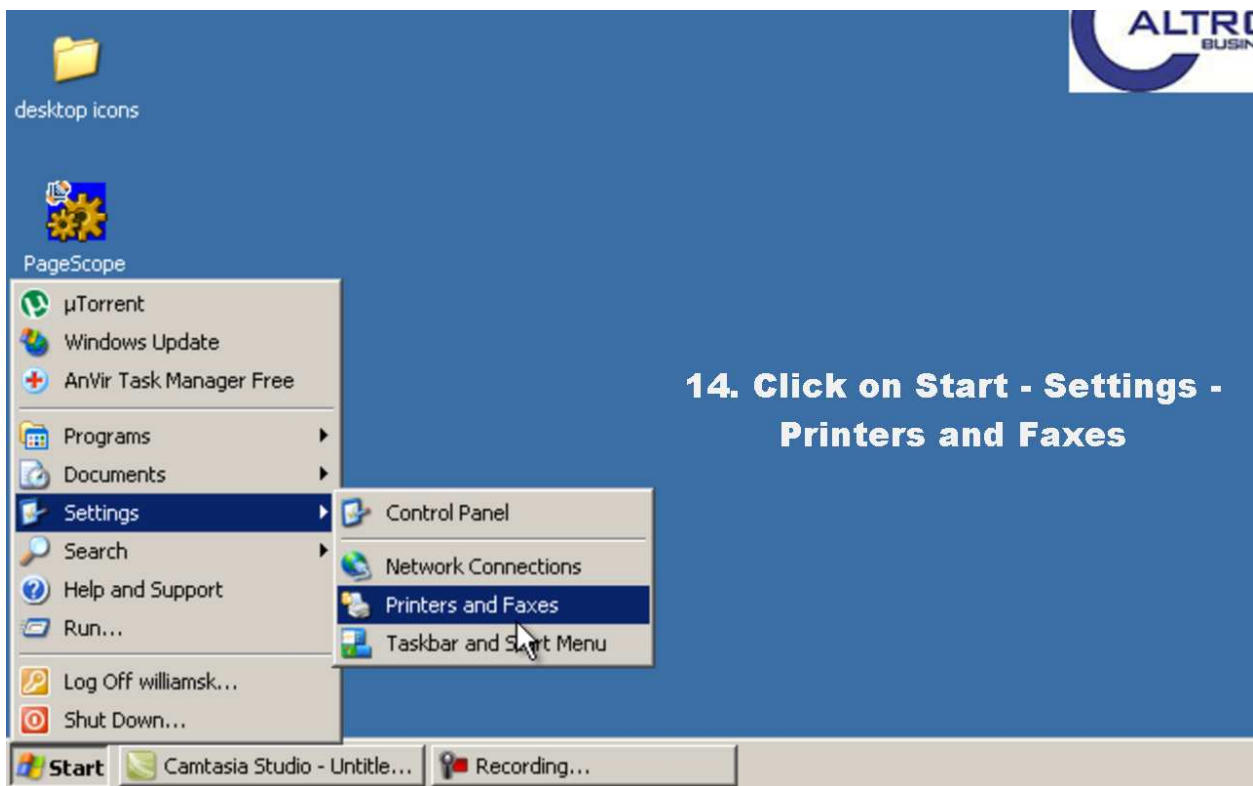


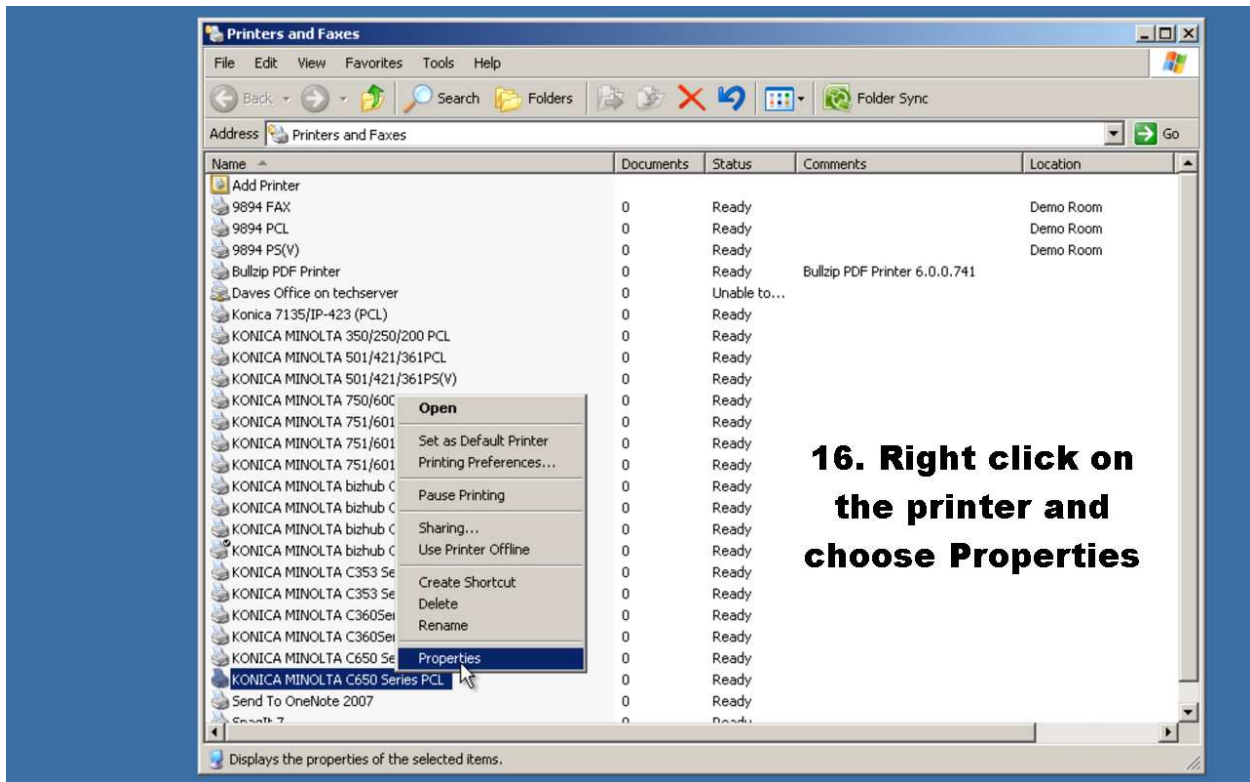
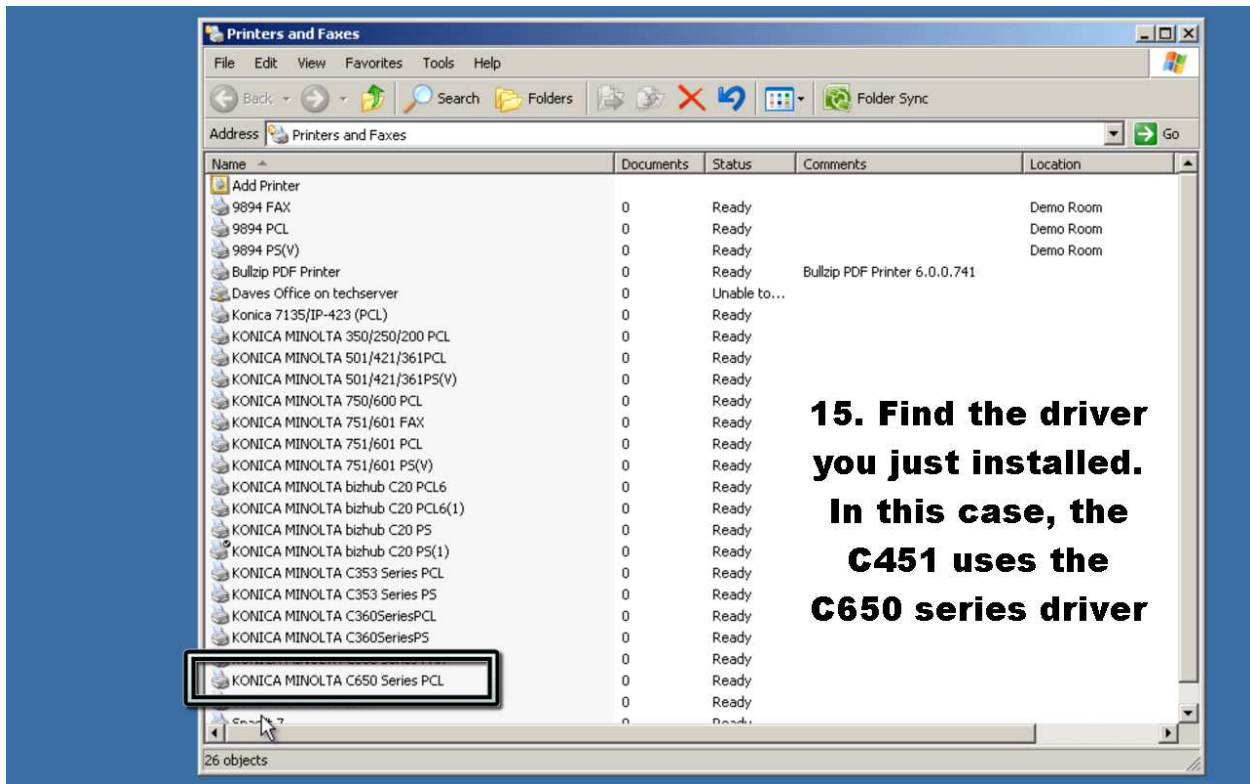




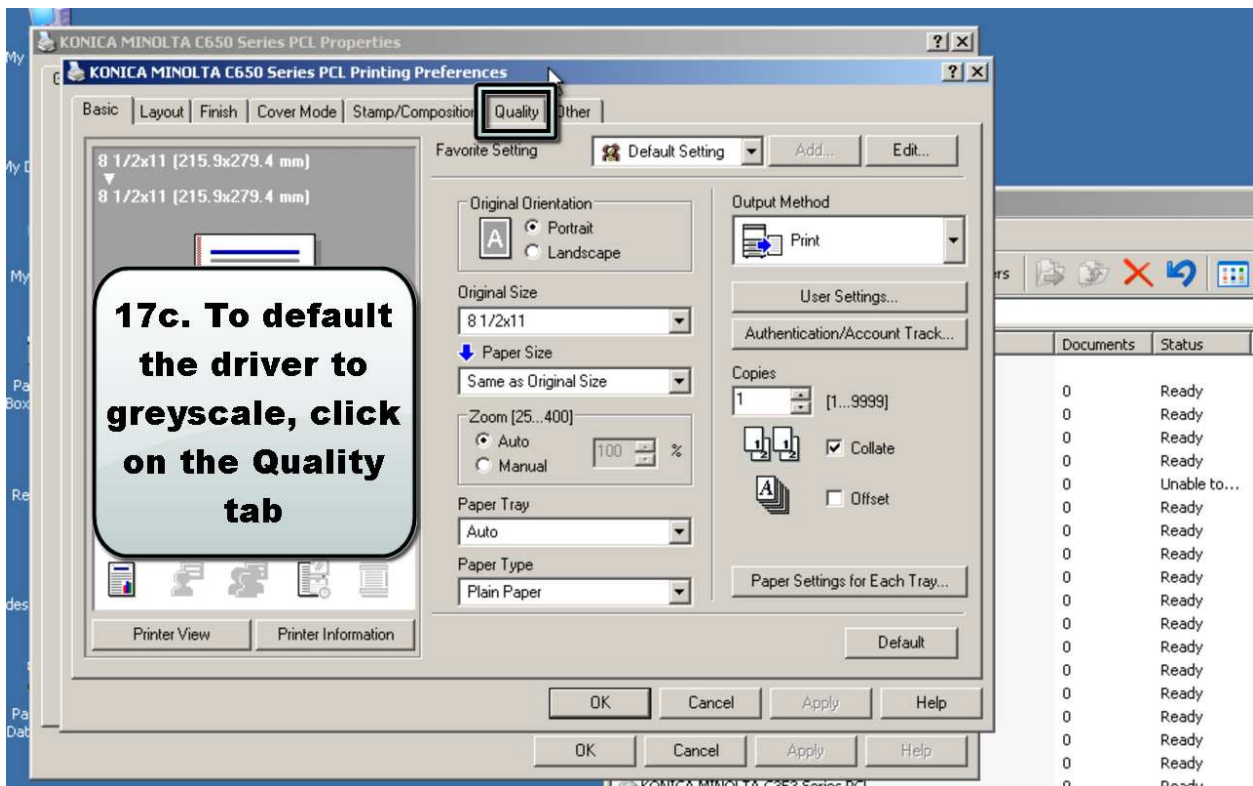
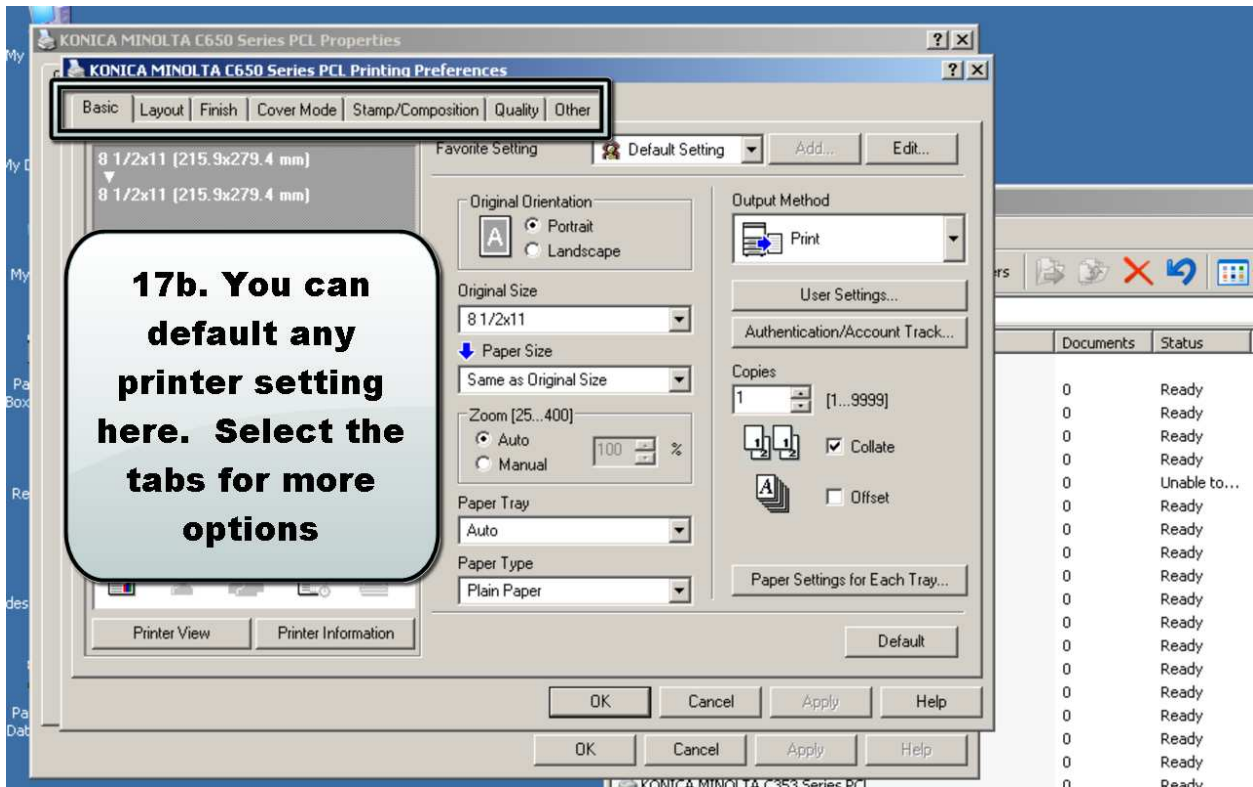
## Print Driver Installation

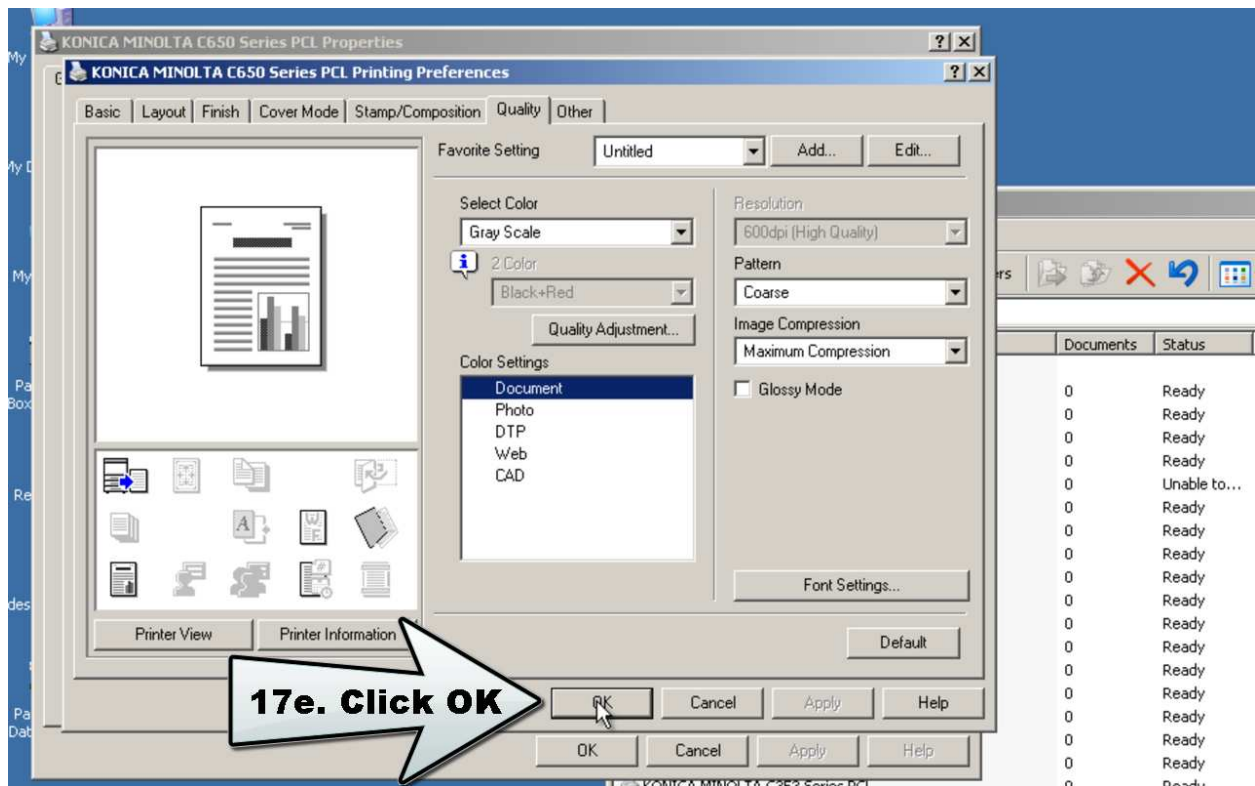
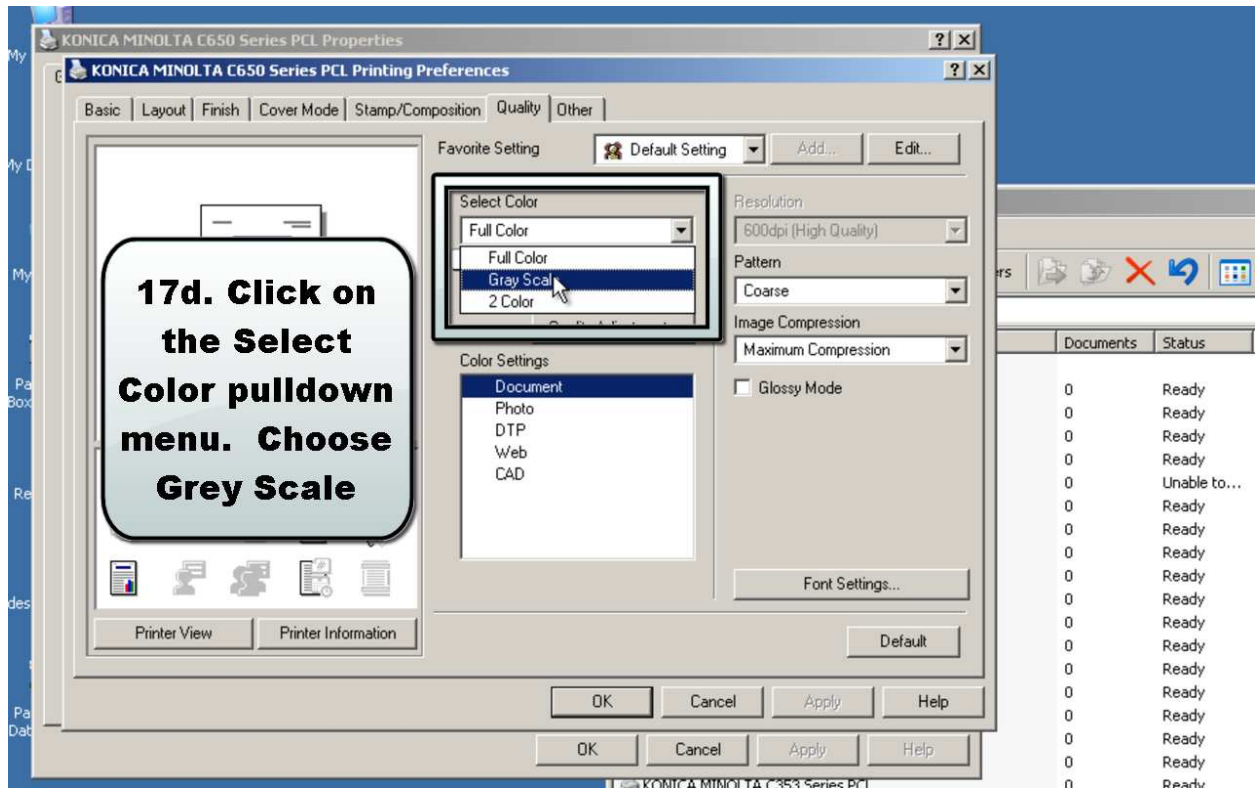
**The print drivers are now installed on the local computer. Now we must go into the Printers and Faxes folder to change the driver's default settings**



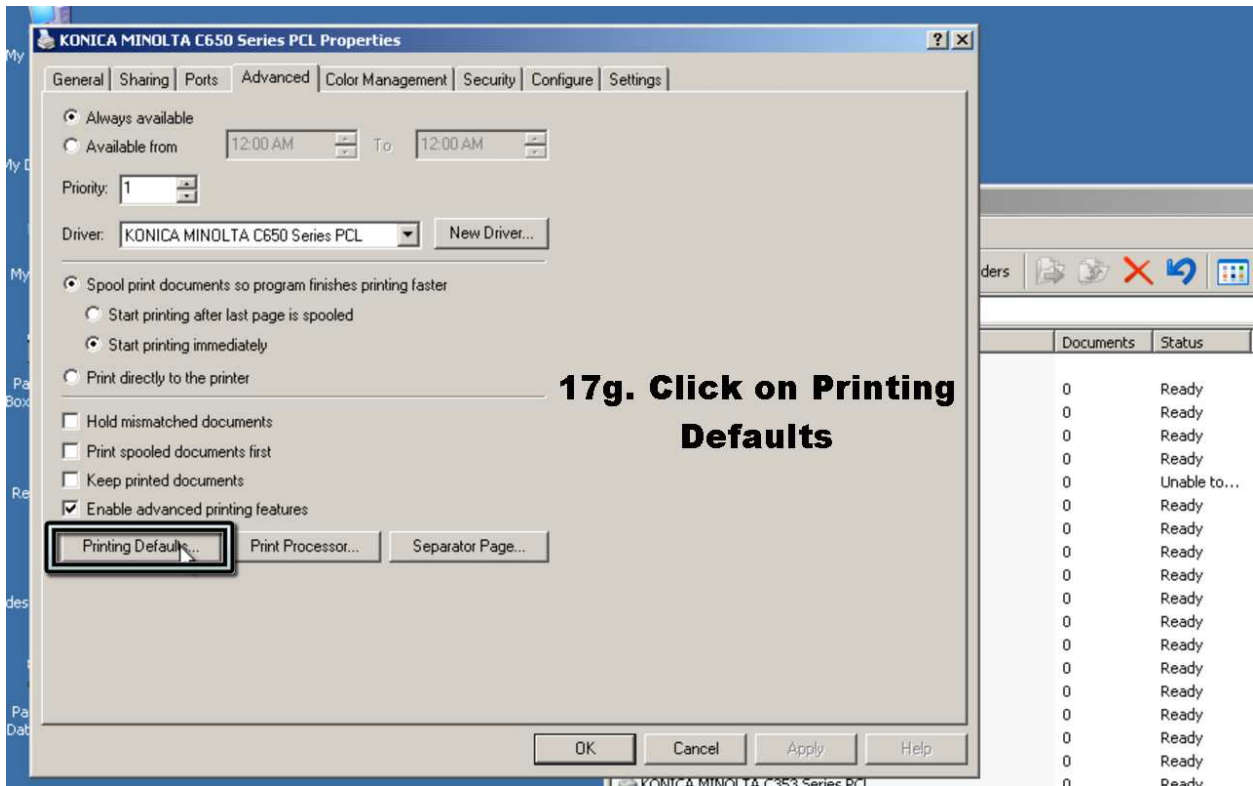
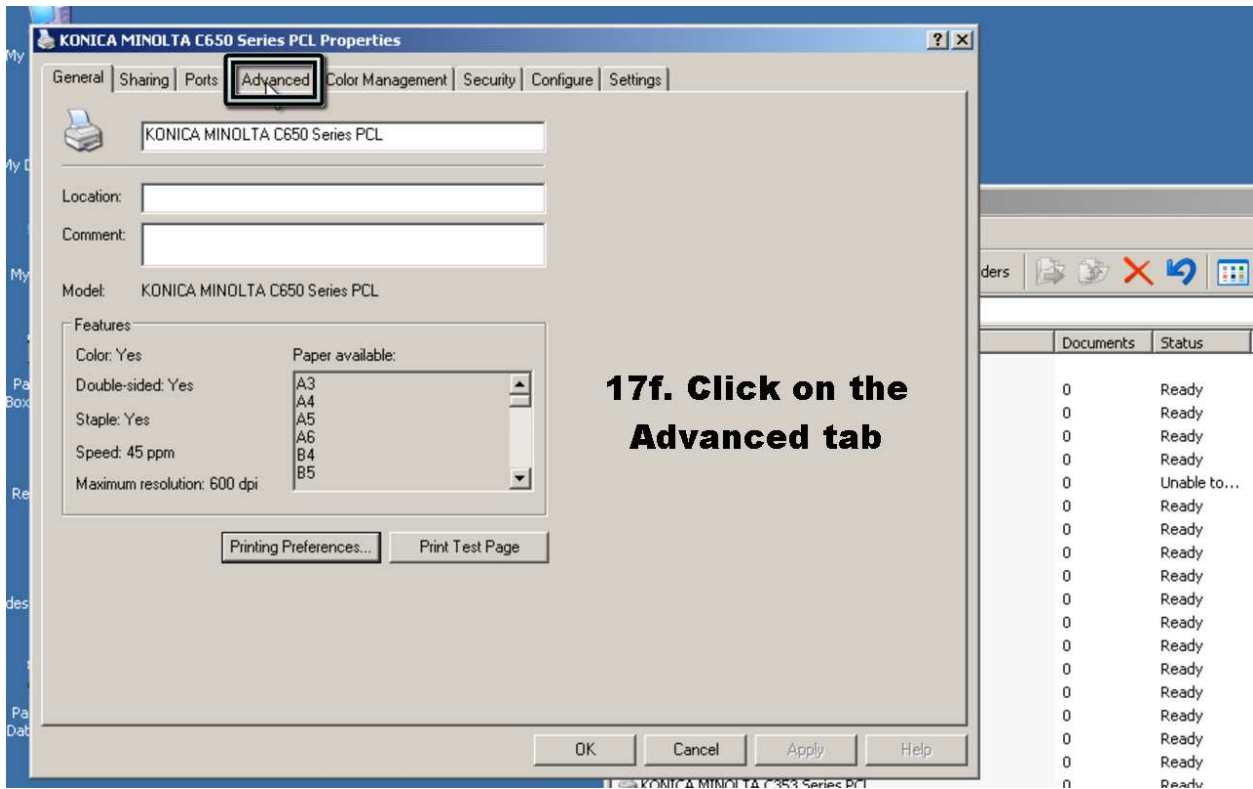


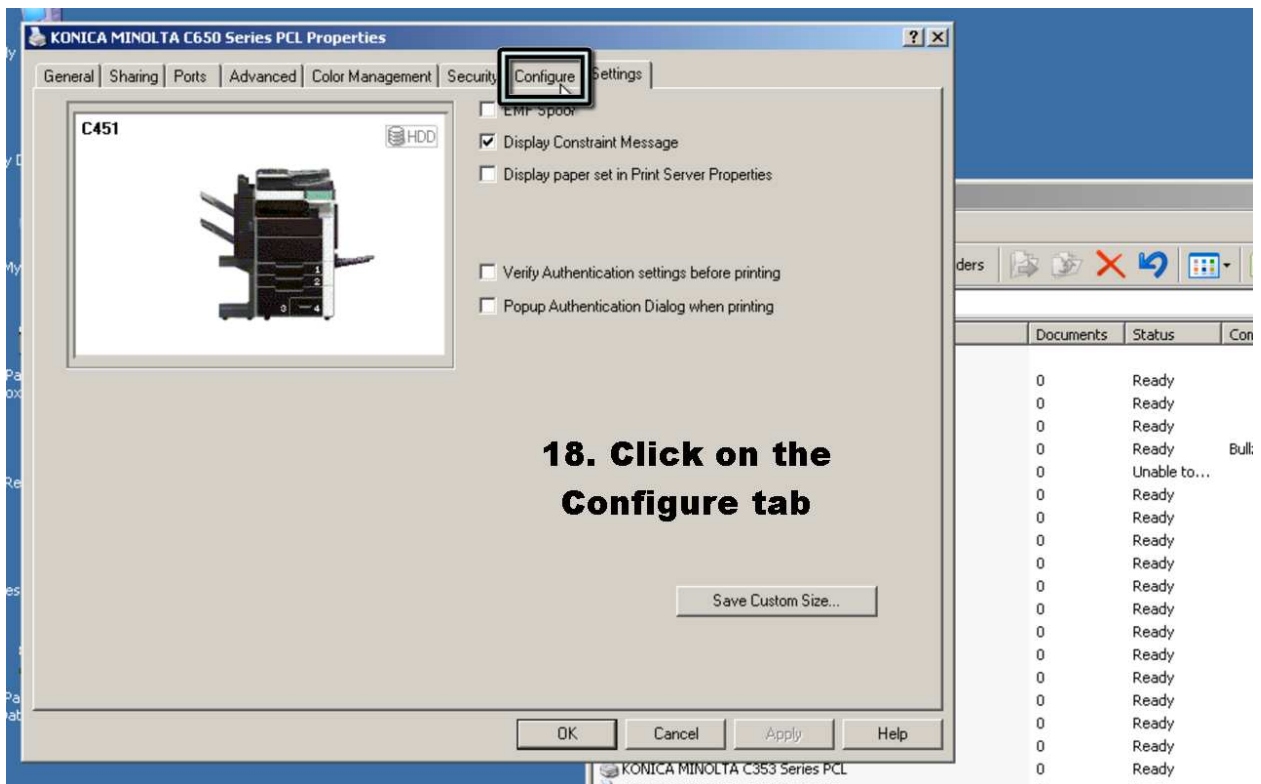
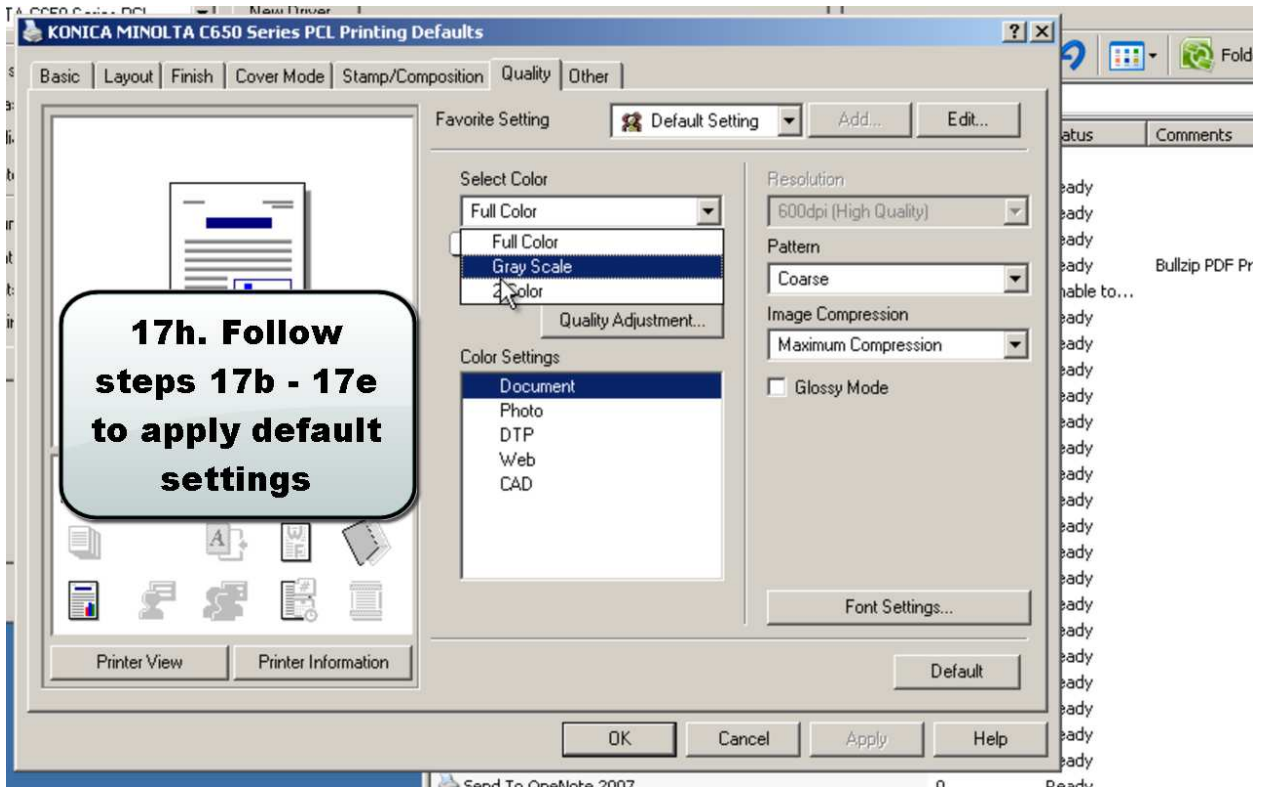


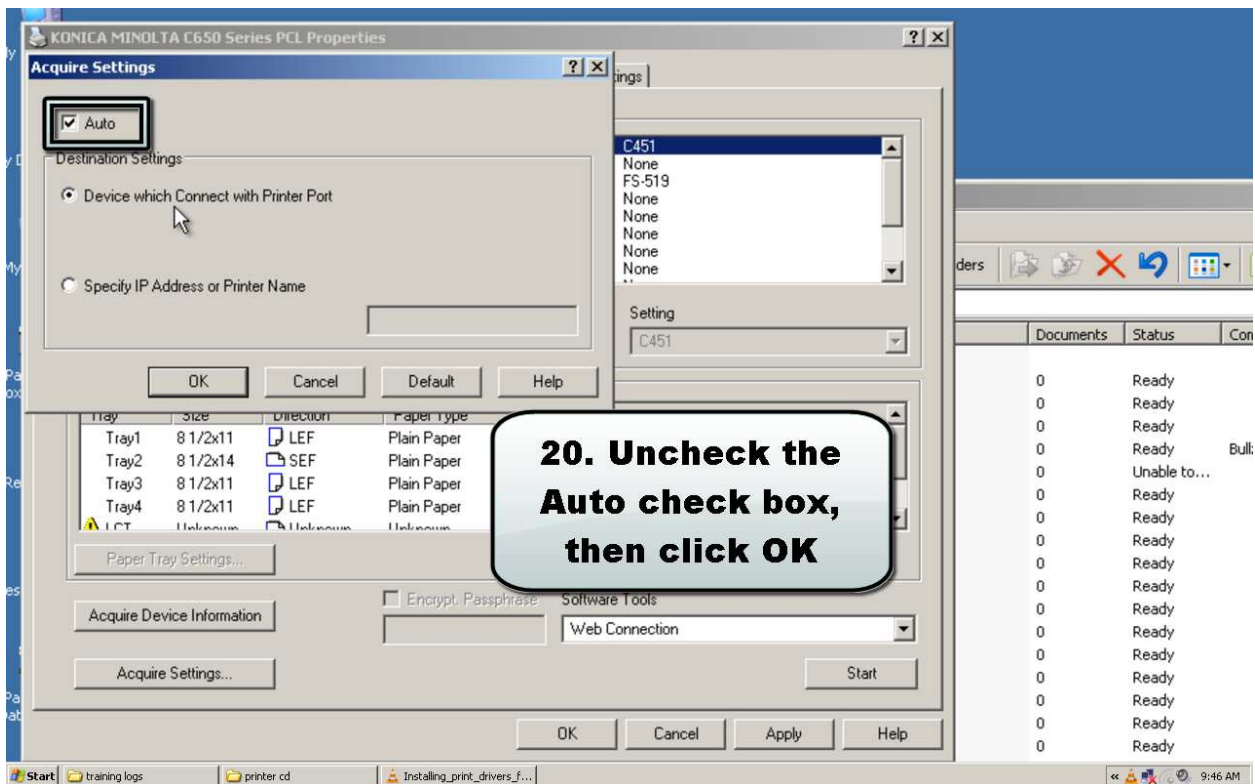
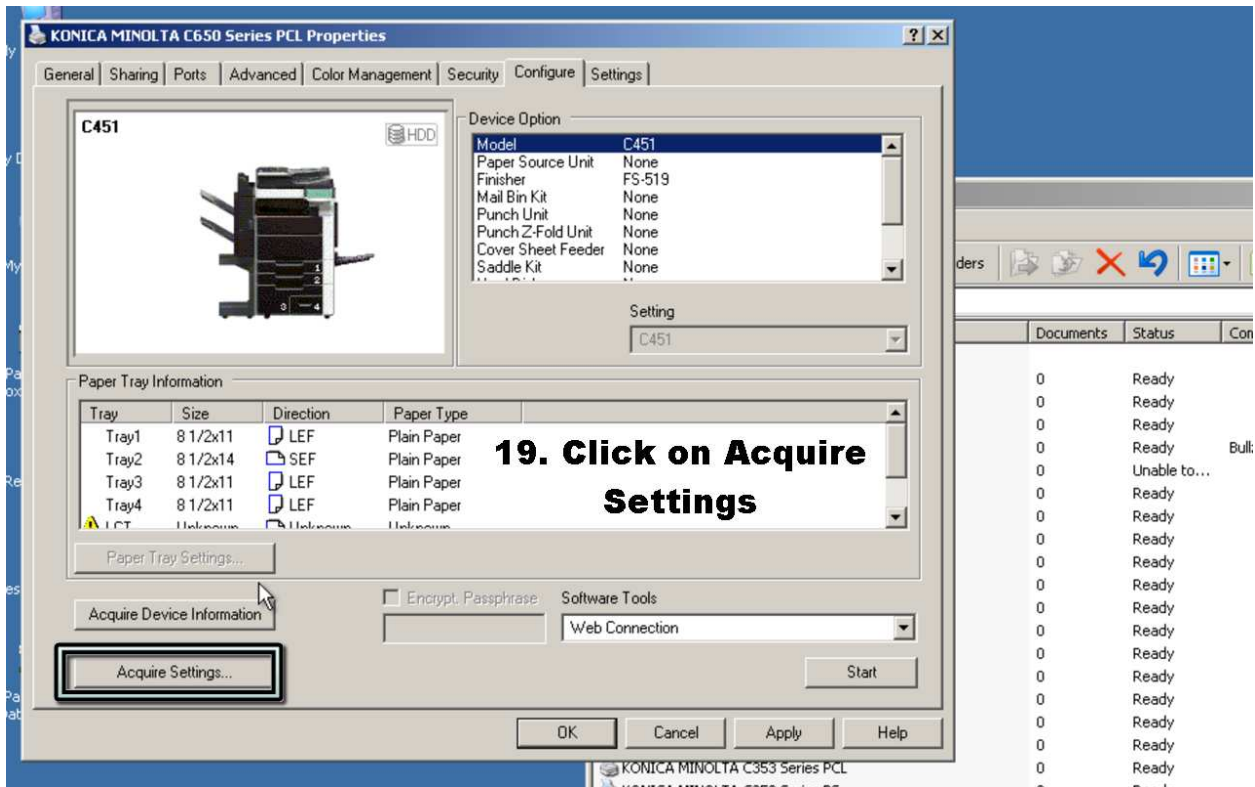


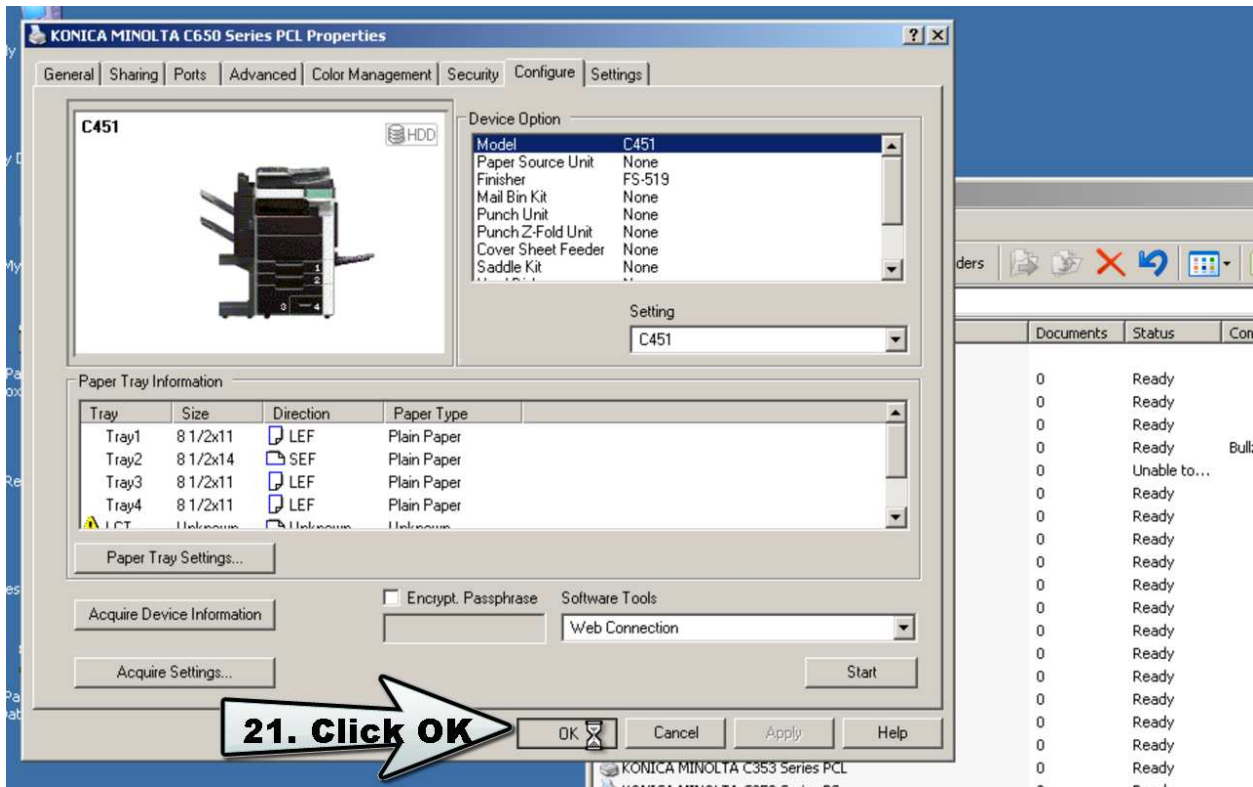












## *Print Driver Installation*

**The print drivers are now installed and configured.**

**If multiple print drivers were installed, make sure to apply default settings to each driver. Also, make sure to follow steps 18 - 21 to uncheck the Auto Acquire option. This option can sometimes cause printing issues.**