

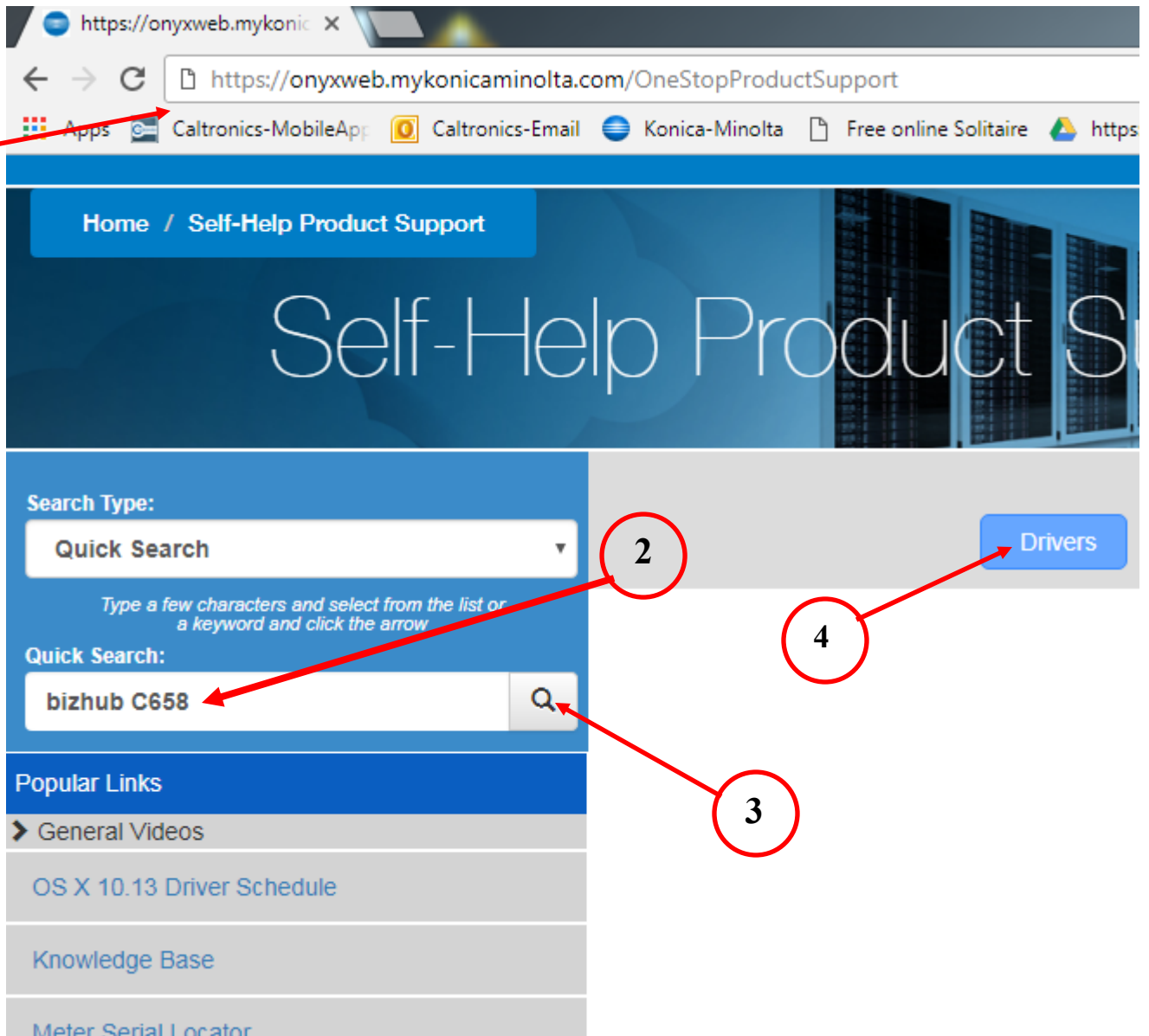
Microsoft Windows Drivers Installation guide



Caltronics Business Systems

Downloading Konica Minolta Drivers

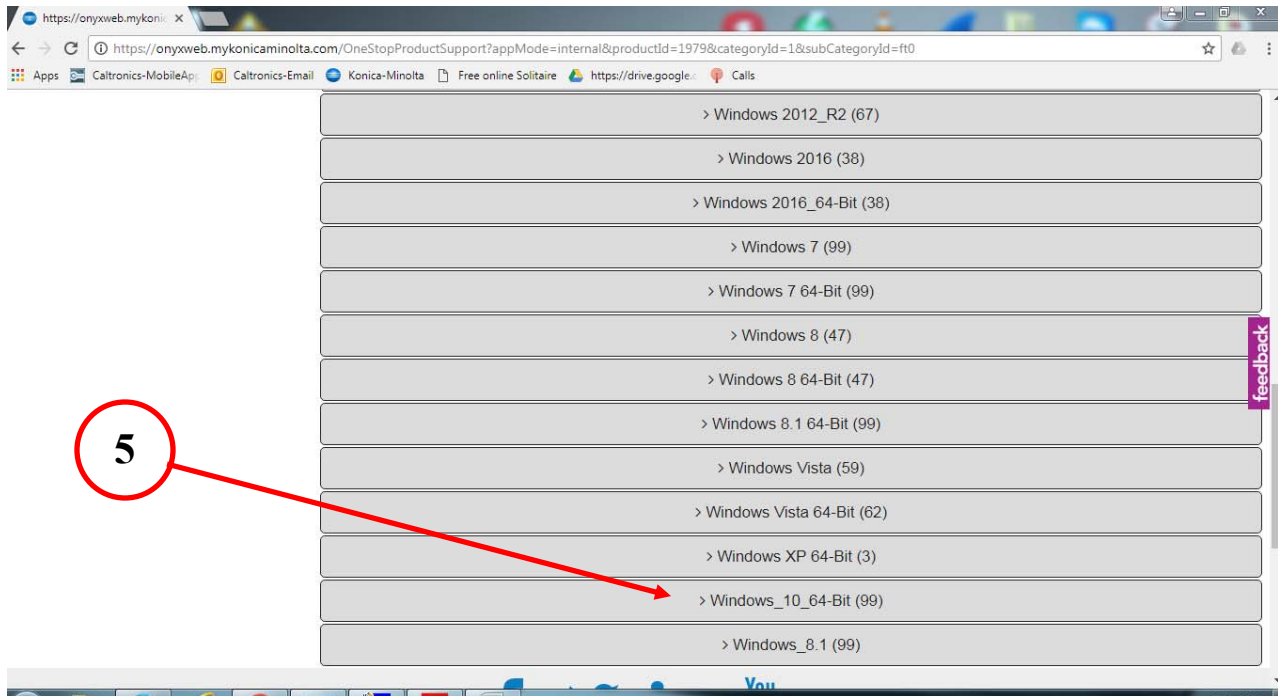
- 1) Go to <http://onyxweb.mykonicaminolta.com/OneStopProductSupport>
- 2) Enter the MFP model in the 'Quick Search' field. Select the correct model if multiple exist.



3) Click "Magnifying Glass Icon".

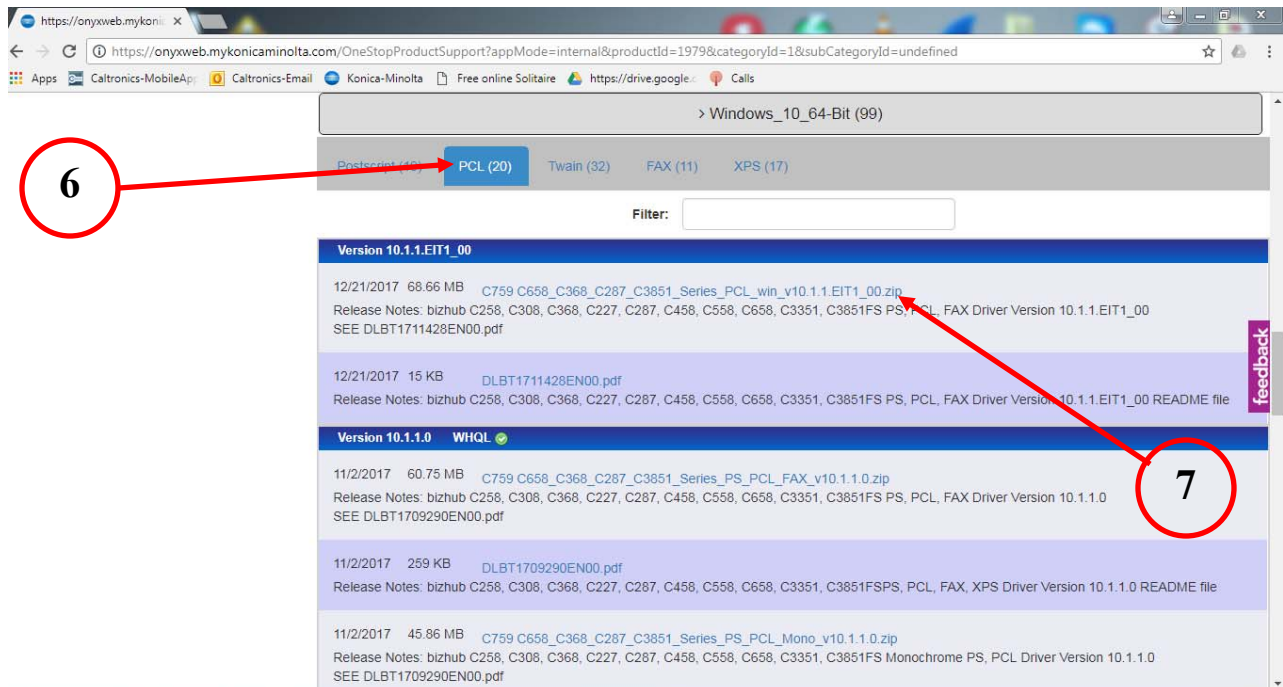
4) Click "Blue" Drivers link.

5) Select your "Operating System" that you use. (32bit or 64bit)

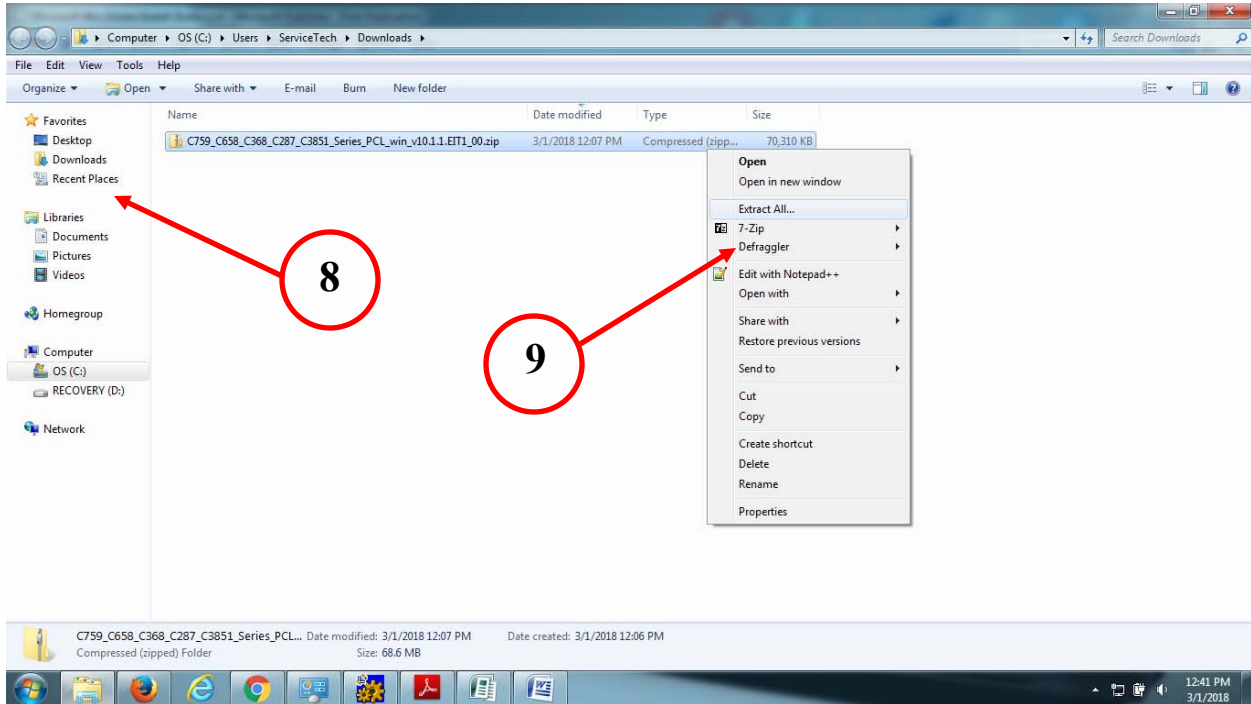


6) On the Screen, select the "PCL" or "Postscript"

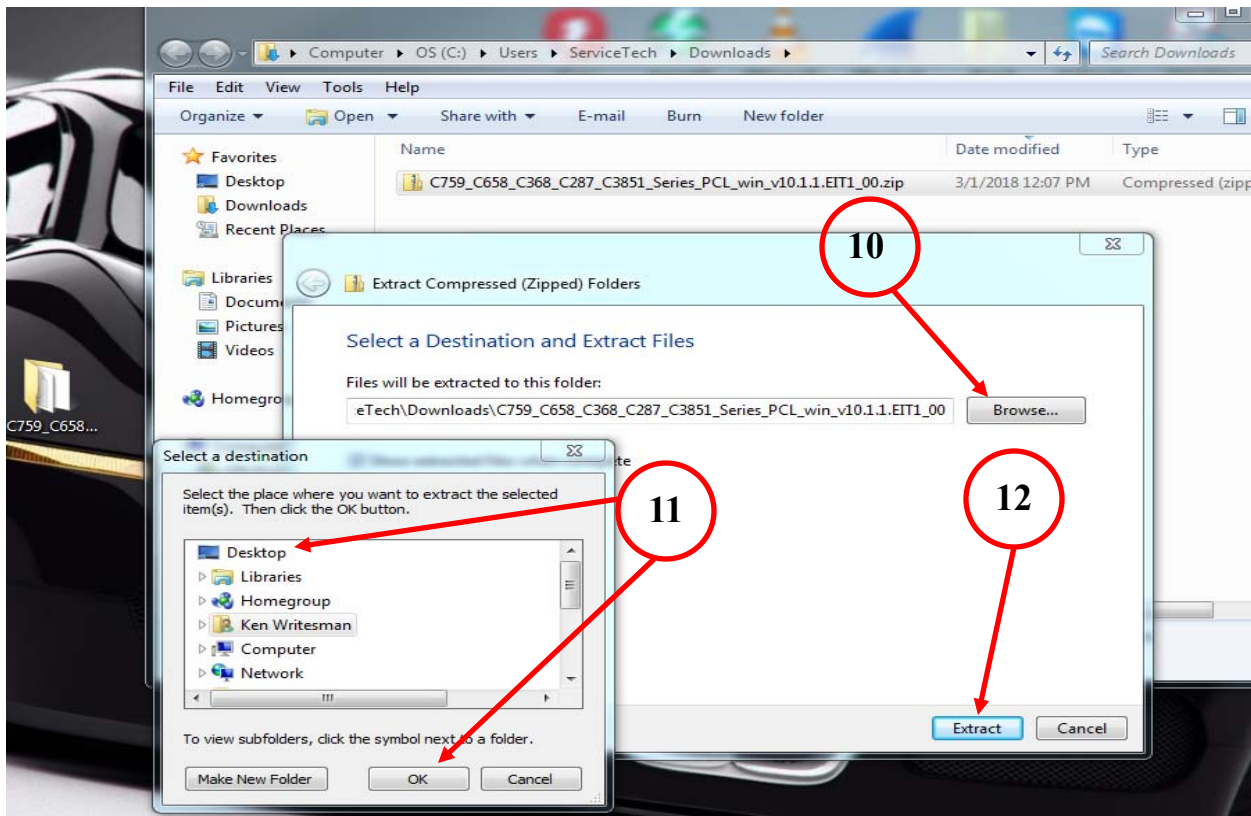
7) Click on the link and download the desired driver. (If unsure, choose the latest version)



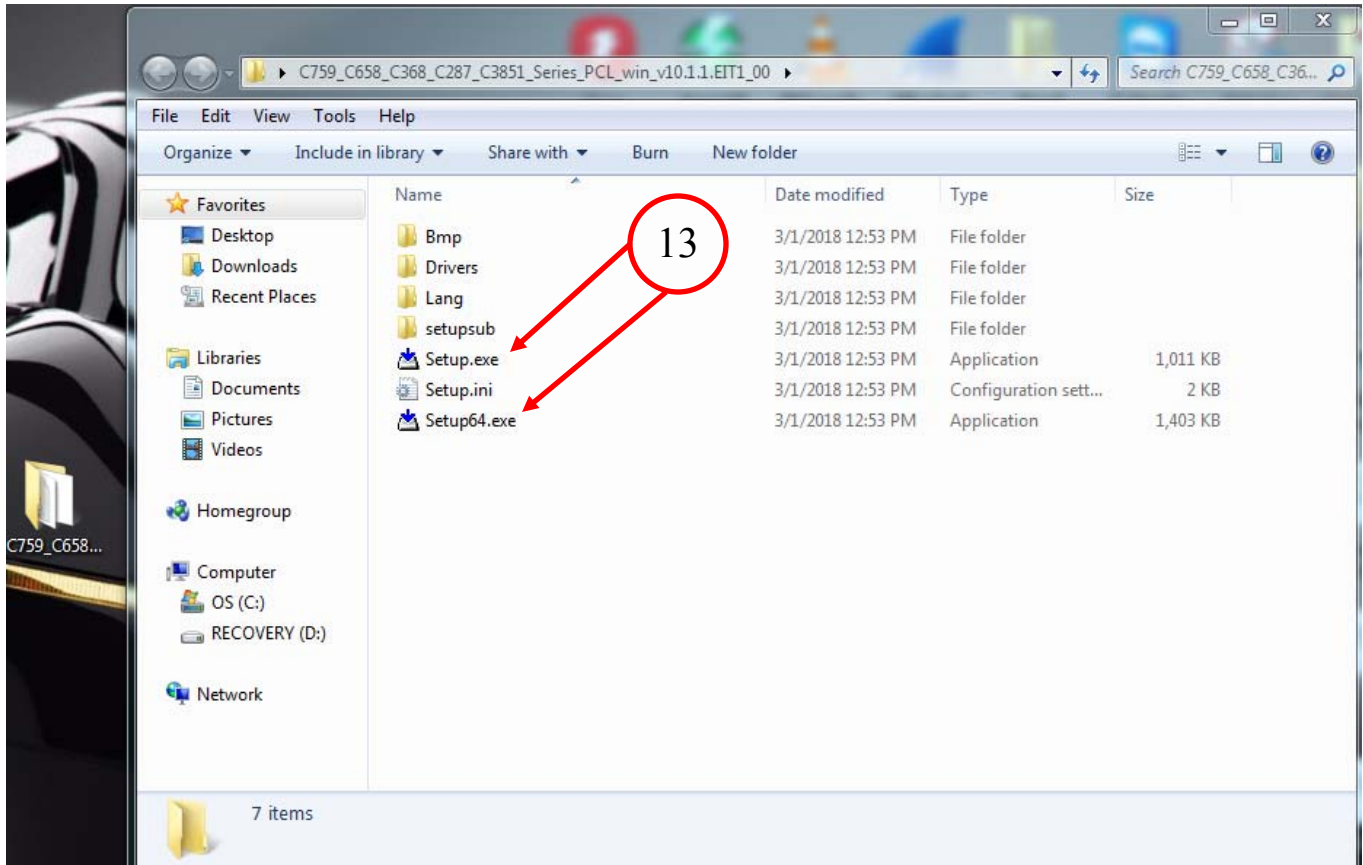
- 8) After the file downloads, locate the driver package file. (*Windows default location is the "Downloads" folder*)
- 9) "Rightclick" on the driver package and click "Extract All"



- 10) On the "Extract Compressed Folders" window, click on "Browse"
- 11) Select "Desktop" , then "OK",
- 12) Select "Extract".

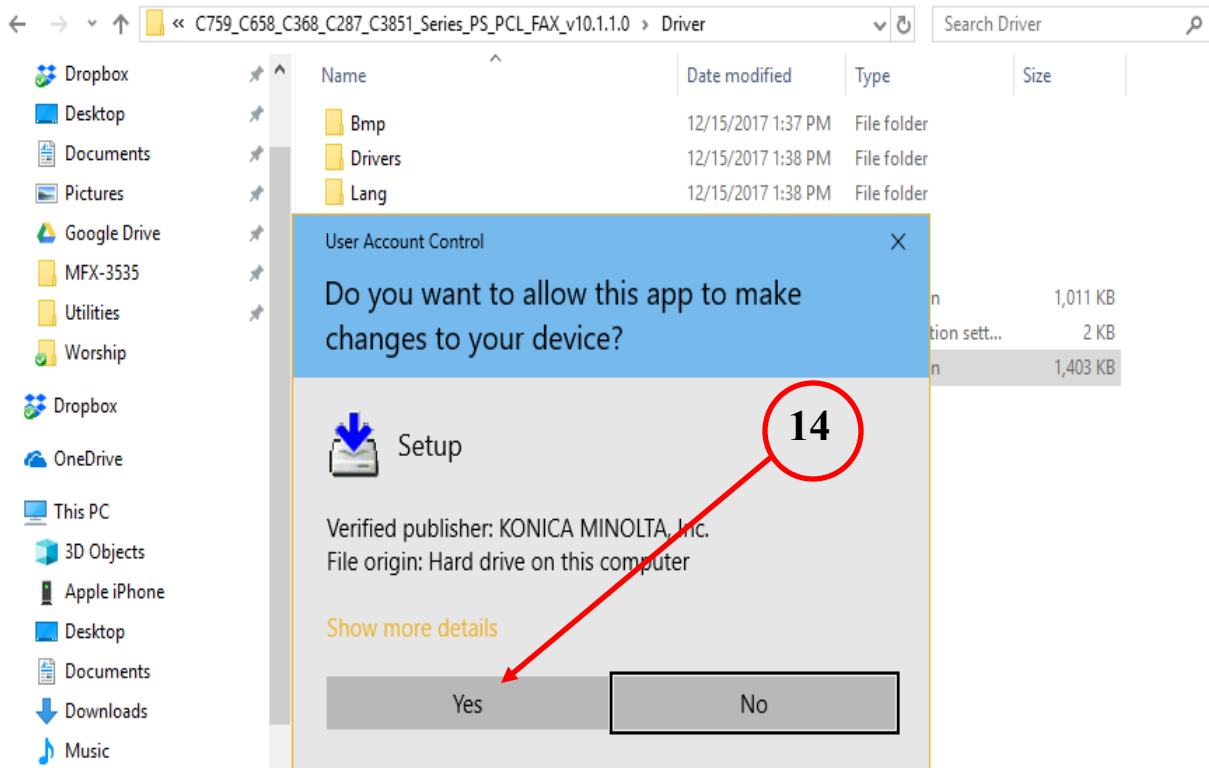


- 13) After extracting all files, a newly open window will appear. Locate the two **“Setup”** files & **“Double click”** the version for the correct Operating System installed. **(32bit or 64bit)**

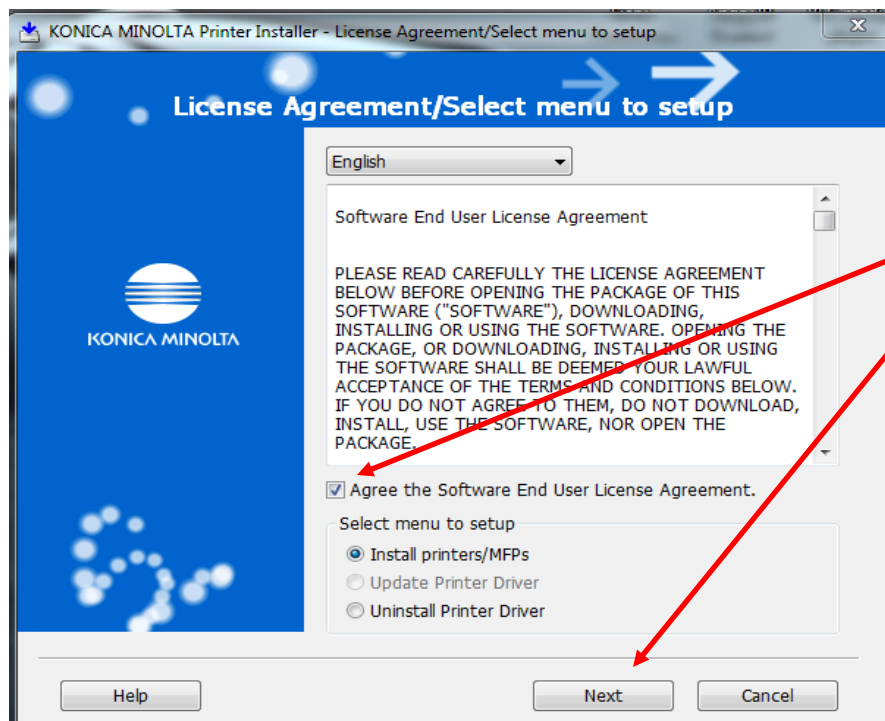


Using the Konica Minolta driver installation utility,

- 14) User Account Control window will pop up and click "Yes"

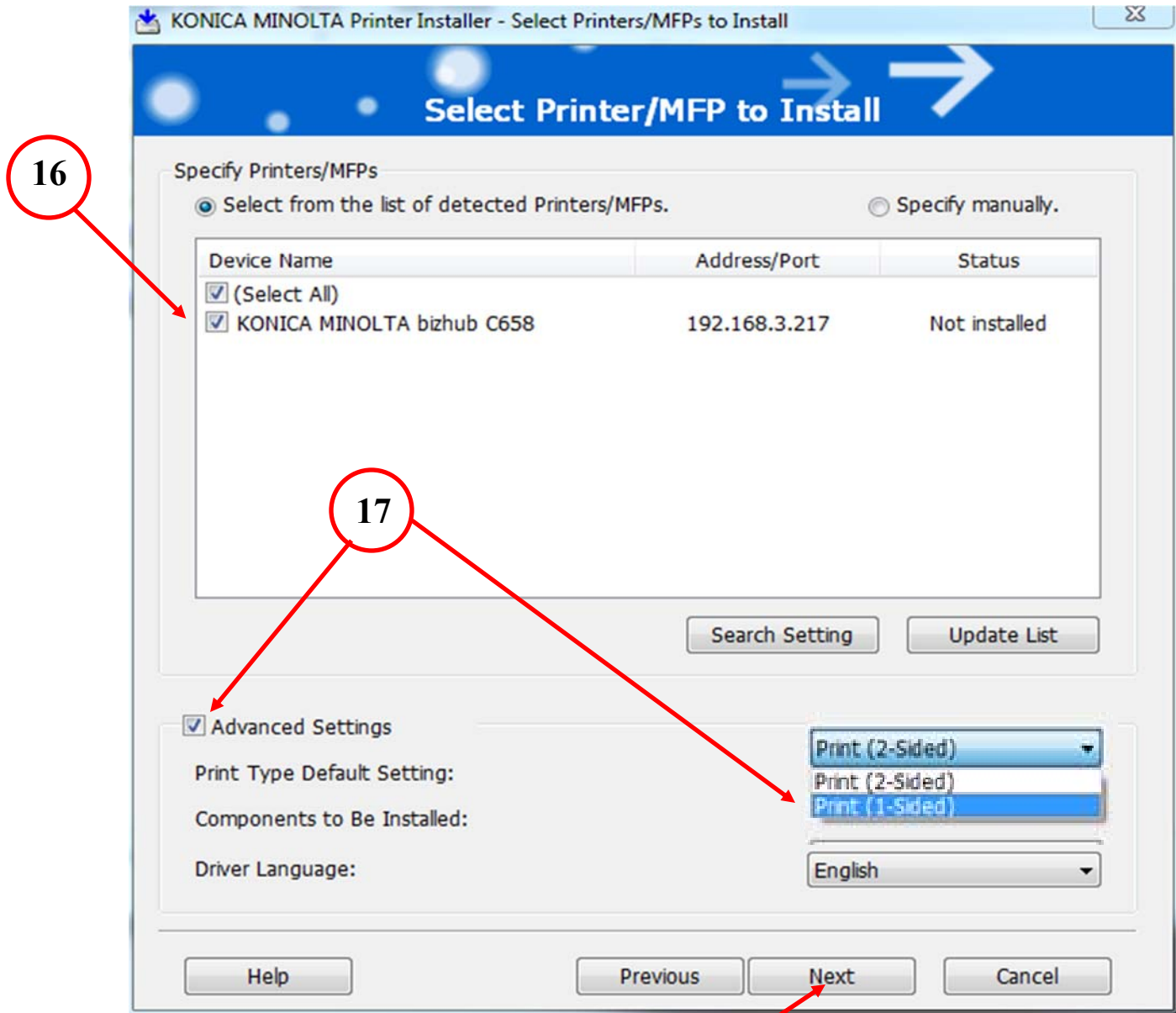


- 15) From the "License Agreement window", click "Agree" and then click "Next"



16) Choose the device that the driver is to be installed.

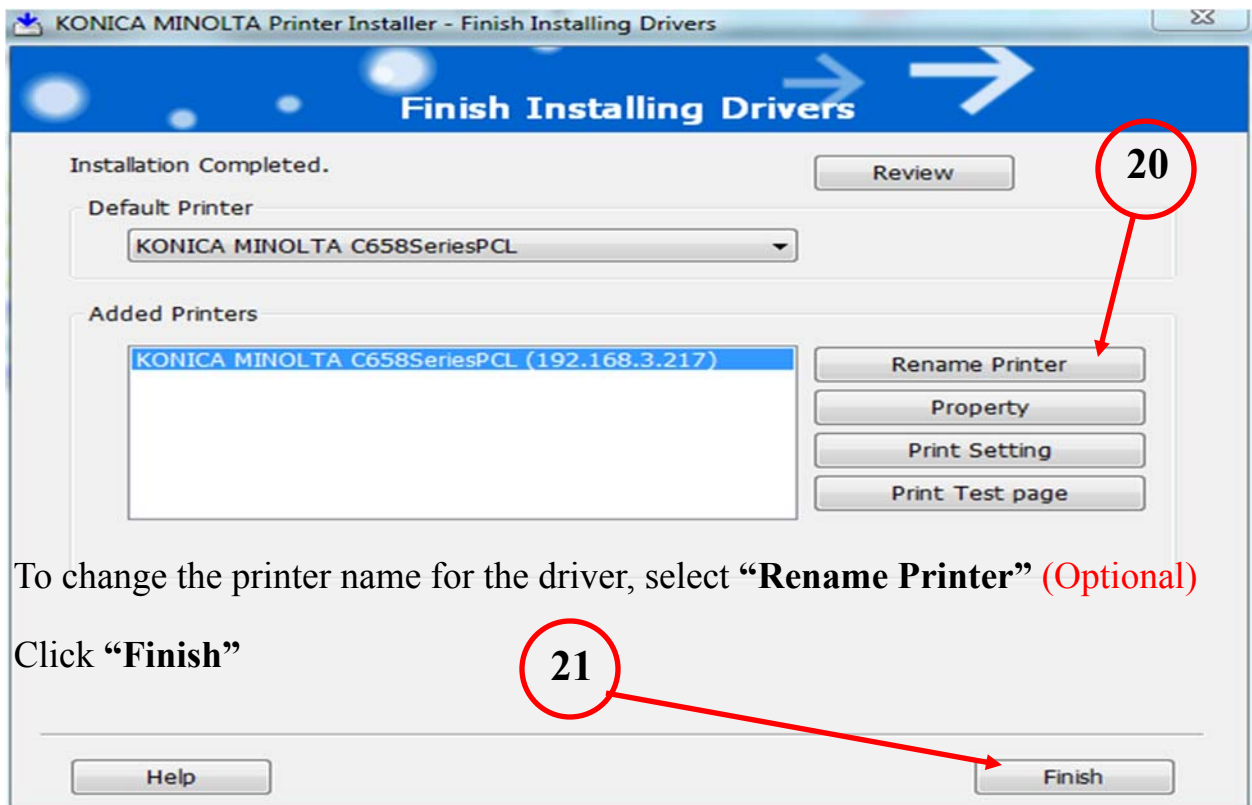
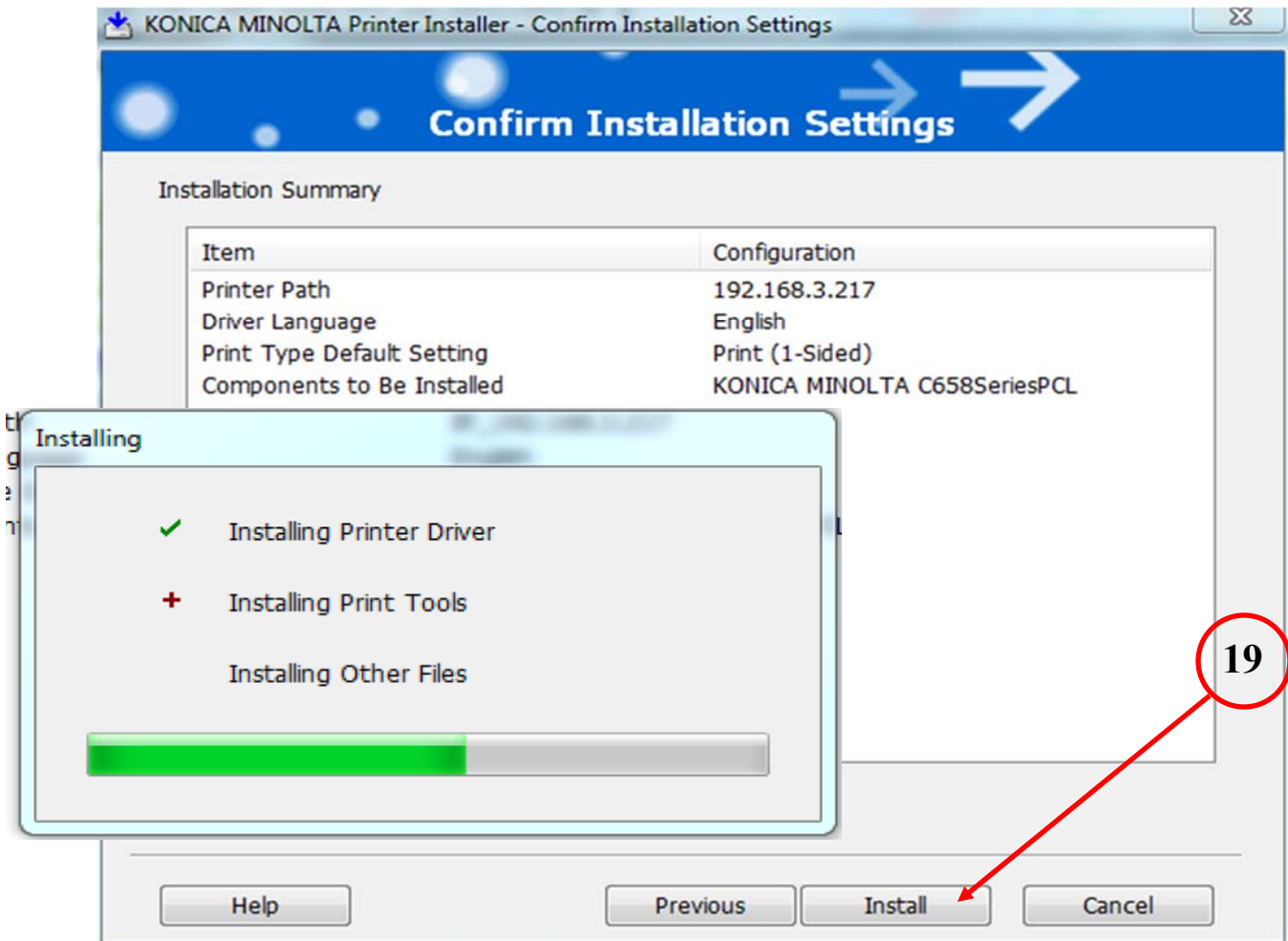
17) Check the **“Advanced Settings”** box and change the “Print (2Sided)” to **“Print (1 Sided)”**



18) Click **“Next”**

18

19) Click **“Install”**

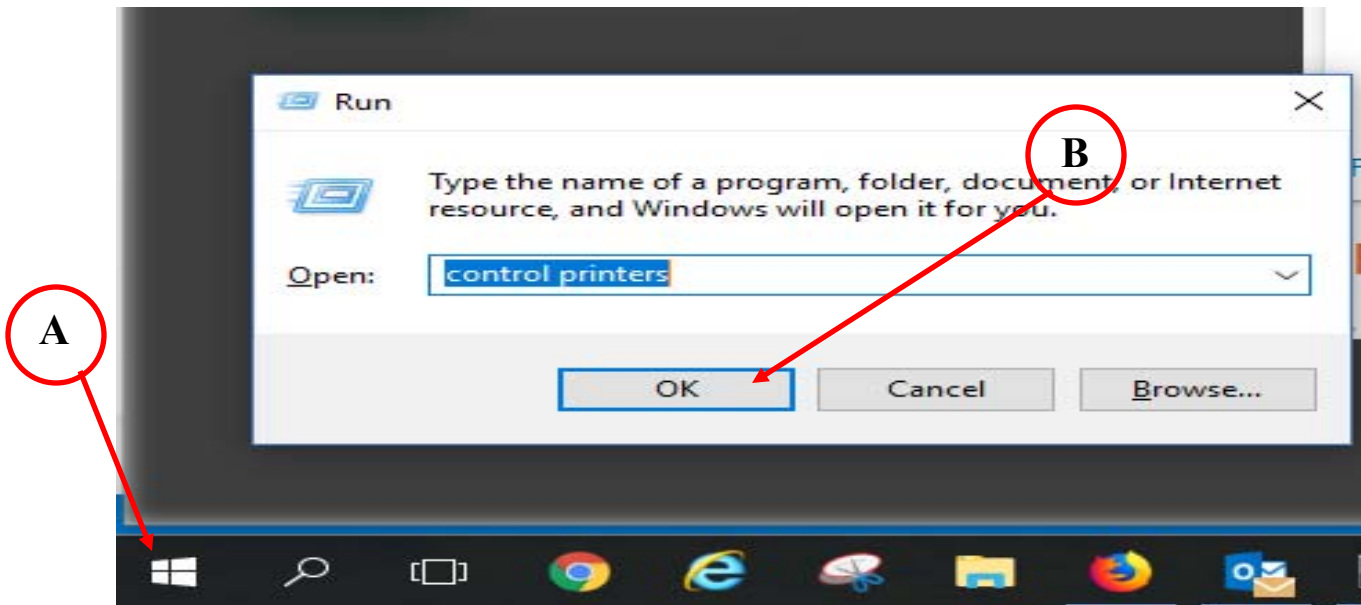


20) To change the printer name for the driver, select **“Rename Printer”** (Optional)

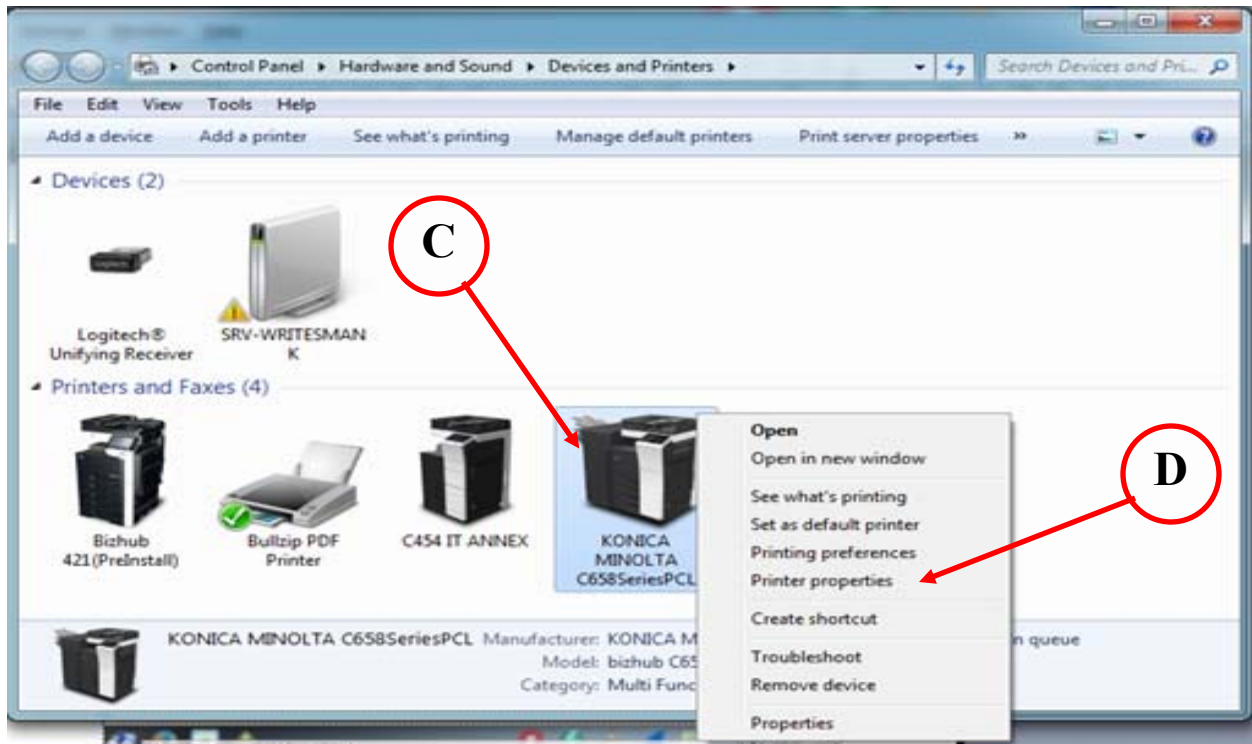
21) Click **“Finish”**

CONFIGURING DEFAULT DRIVER SETTINGS.

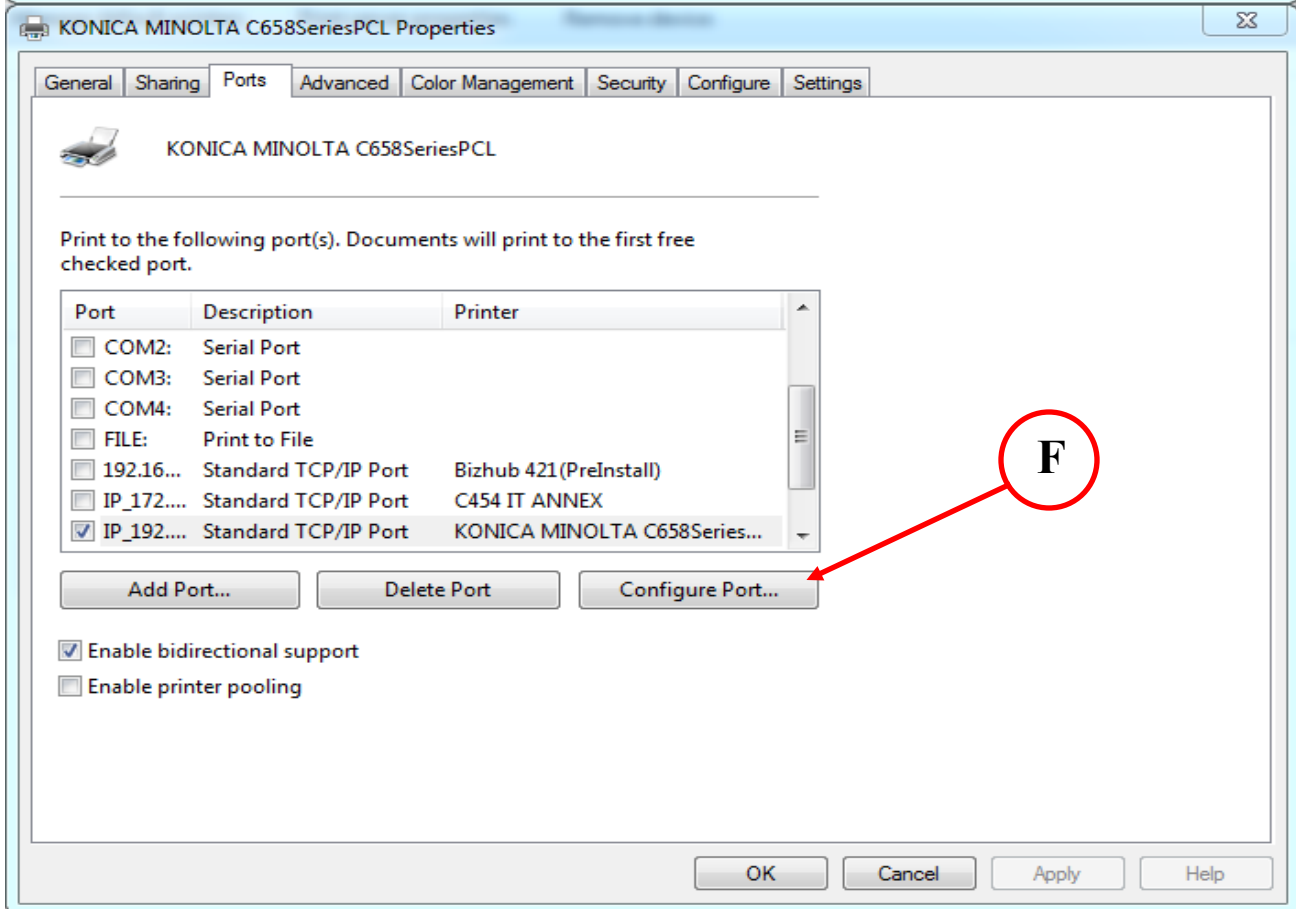
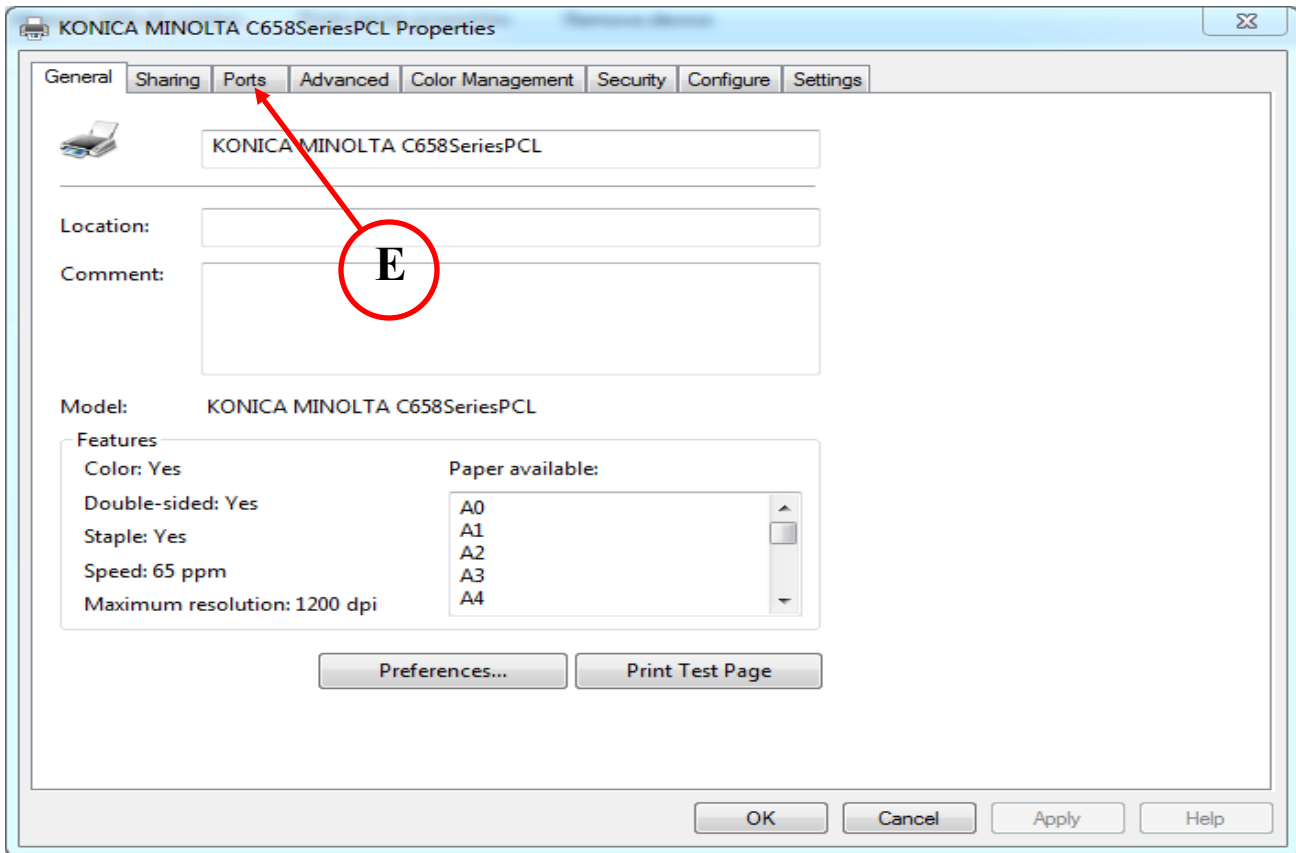
- A) Right click **"Windows Icon"** and select **"Run"**
- B) Type **"control printers"** and click **"OK"**



- C) Move the mouse cursor over the newly installed printer & **"right click"** the MFP icon.
- D) From the pop-up window, select **"Printer Properties"**



E) From the **"PCL Properties"** window, select the **"Ports"** tab.



F) The highlighted port should be the newly installed driver. Select **"Configure Port"**.

G) Select **“Raw”** & Uncheck **“SNMP Status Enabled”**, then click **“OK”**

Configure Standard TCP/IP Port Monitor

Port Settings

Port Name: IP_192.168.3.217

Printer Name or IP Address: 192.168.3.217

Protocol

Raw LPR

Raw Settings

Port Number: 9100

LPR Settings

Queue Name:

LPR Byte Counting Enabled

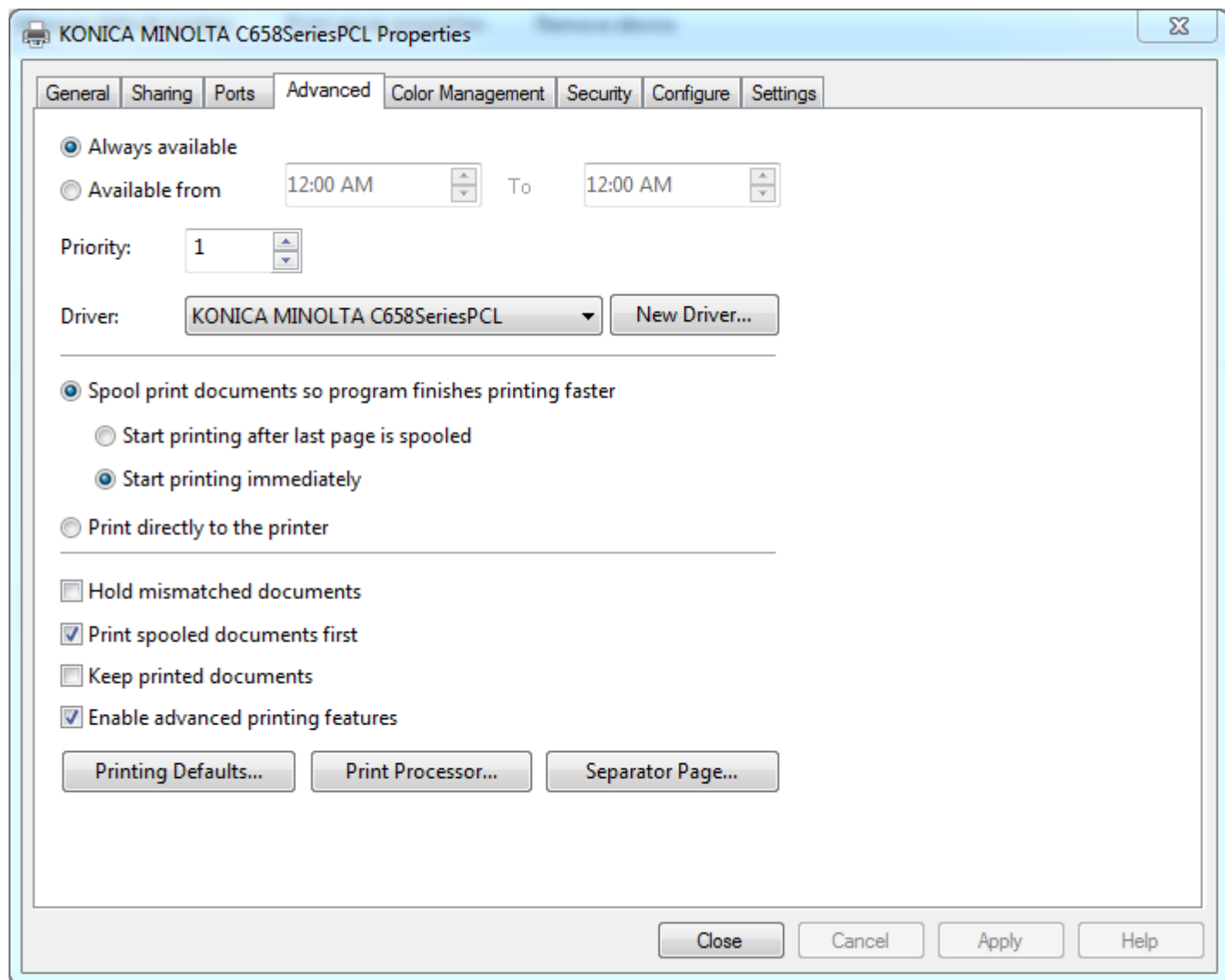
SNMP Status Enabled

Community Name: public

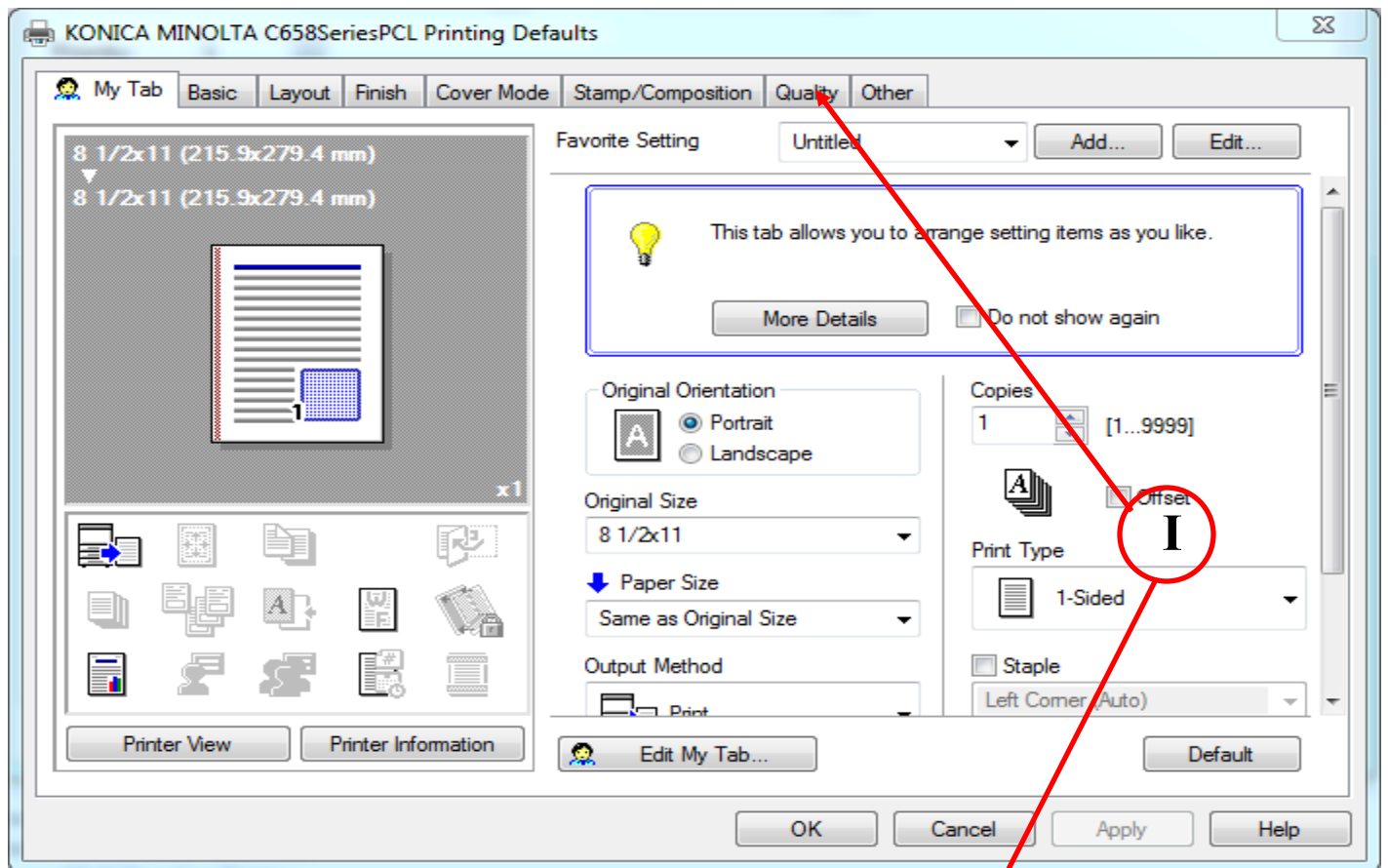
SNMP Device Index: 1

OK Cancel

H) Select the **“Advanced”** tab, and then Printing **“Defaults...”**



I) Select the **"Quality"** tab, and then choose **"Gray Scale"** from the **"Select Color"** window.



J) Finish by clicking **"Apply"** and then **"OK"**

