

# *Microsoft Windows*

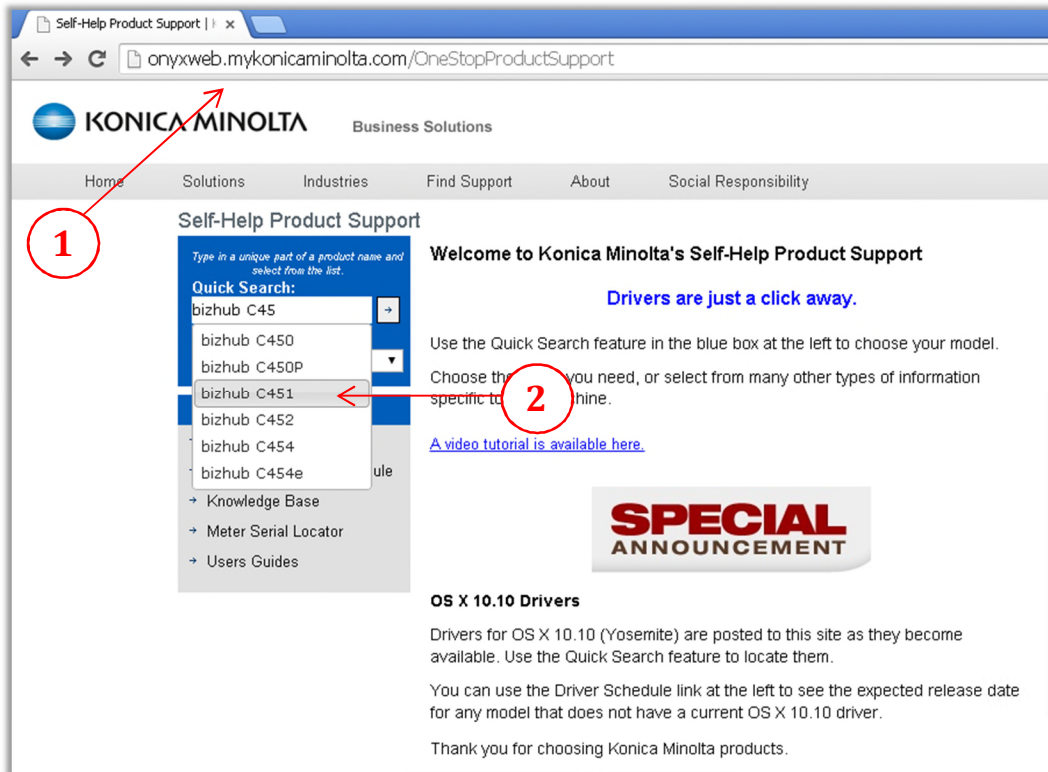
## *Drivers installation guide*



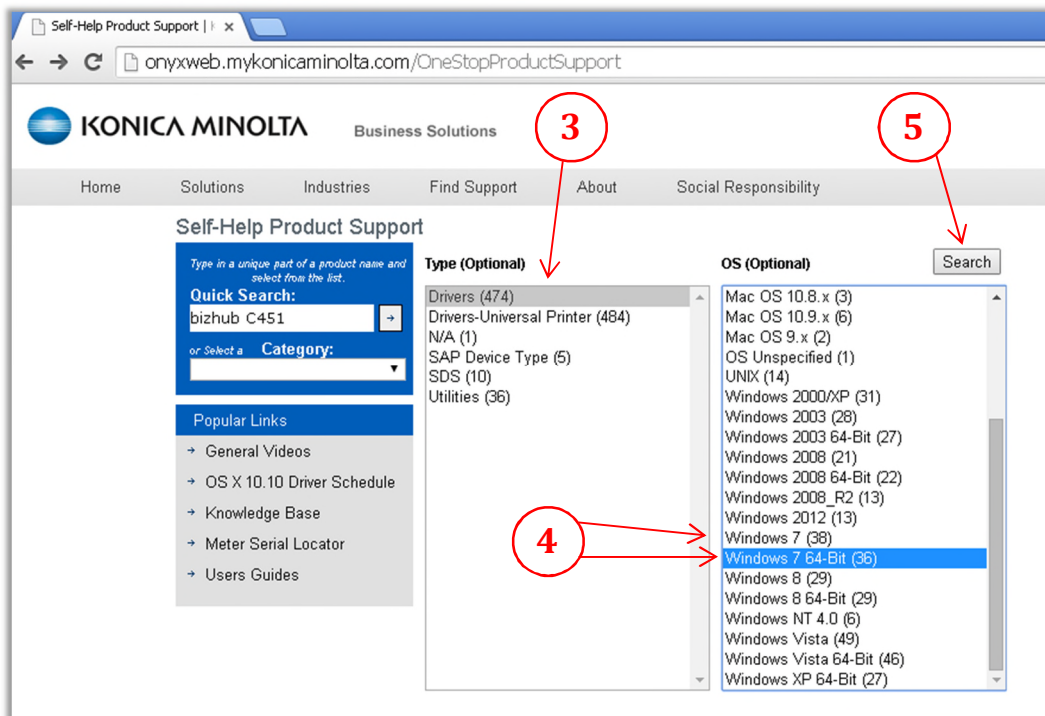
*Caltronics Business Systems*

# Downloading Konica Minolta Drivers

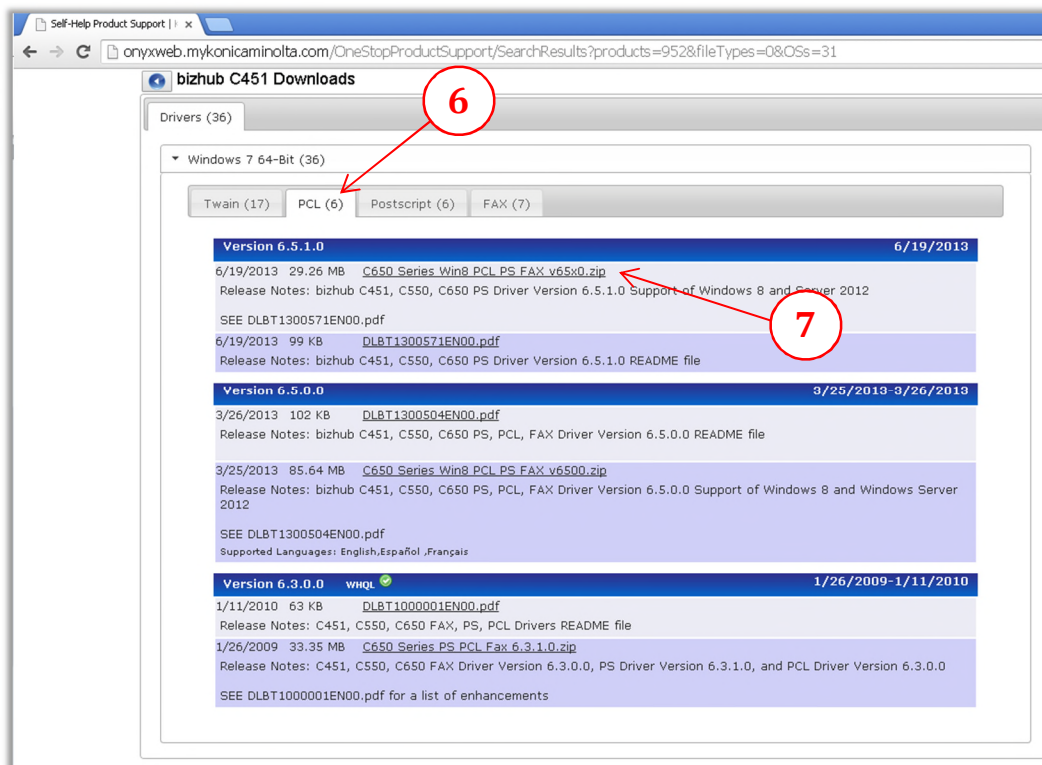
- 1) Go to <http://onyxweb.mykonicaminolta.com/OneStopProductSupport>
- 2) Enter the MFP model in the **'Quick Search'** field. Select the correct model if multiple exist.



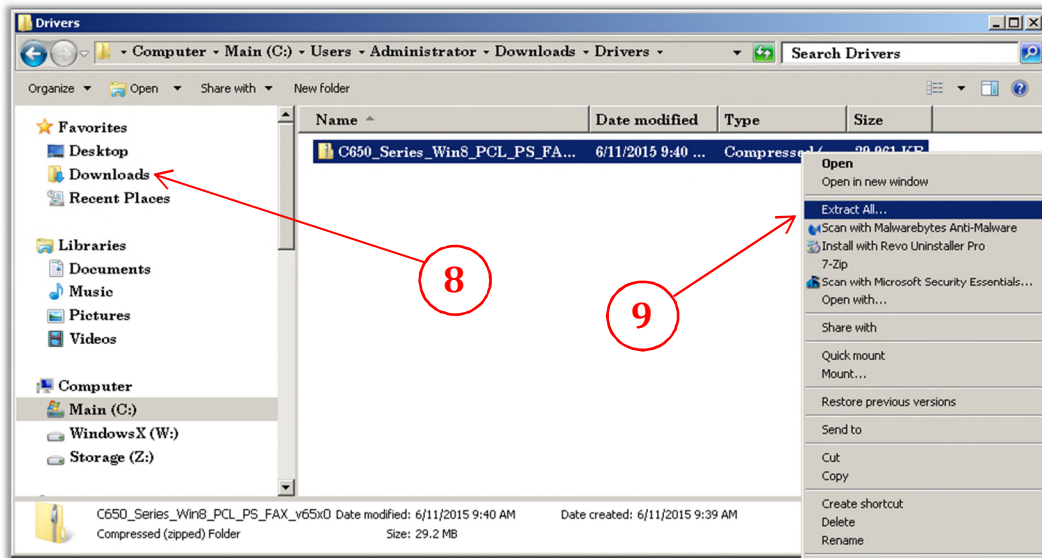
- 3) In the **'Type'** window pane, select drivers.
- 4) In the **'OS'** windows pane, select the operating system in use. **(32bit or 64bit)**
- 5) Click **'Search'**.



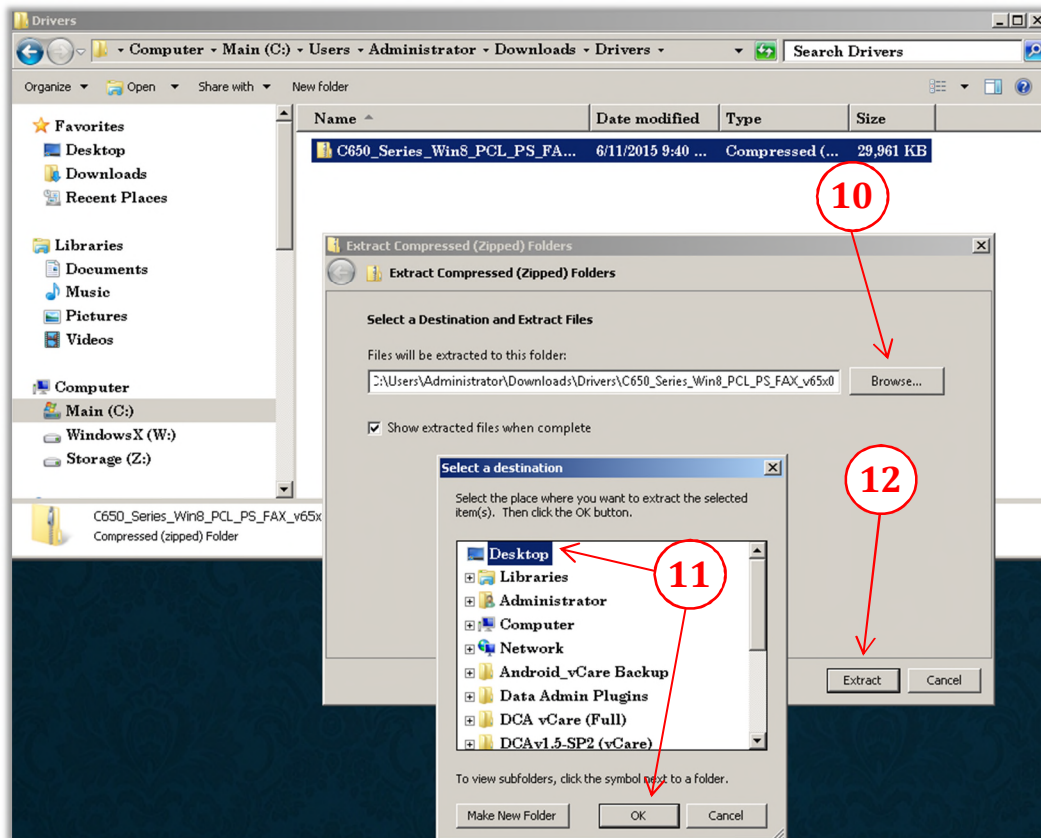
- 6) On the following screen, select the **'PCL'** tab.
- 7) Click on the driver link and download the desired driver. *(If unsure, choose the latest version)*



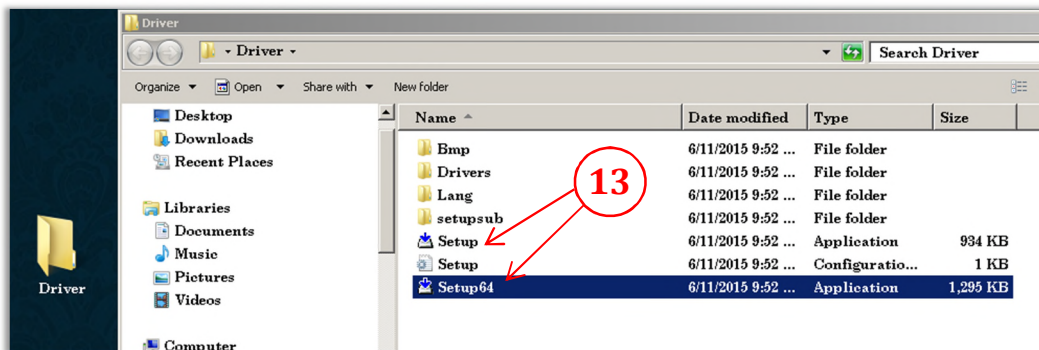
- 8) After the file downloads, locate the driver package file. *(Windows default location is the 'Downloads' folder)*
- 9) **'Right click'** on the driver package and click **'Extract All'**



- 10) On the **'Extract Compressed Folders'** window, click on **'Browse'**.
- 11) Select **'Desktop'**, then **'OK'**,
- 12) Select **'Extract'**.

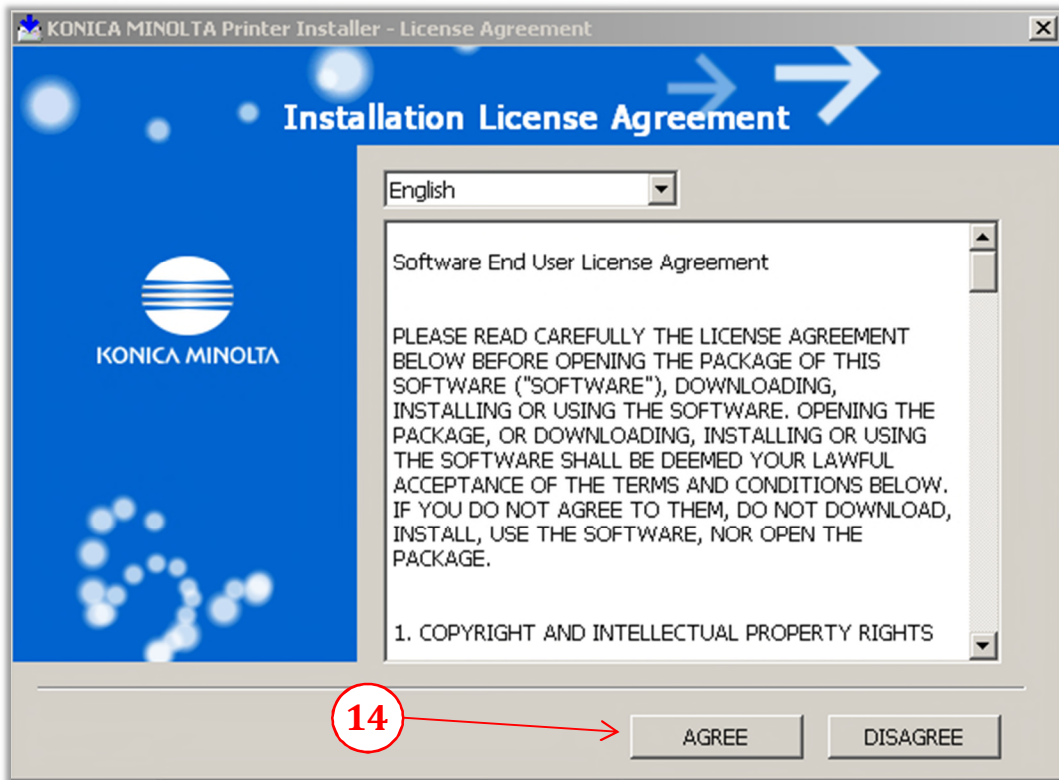


- 13) After extracting all files, a newly open window will appear. Locate the two **'Setup'** files & **'Double click'** the version for the correct OS installed. (32bit or 64bit)

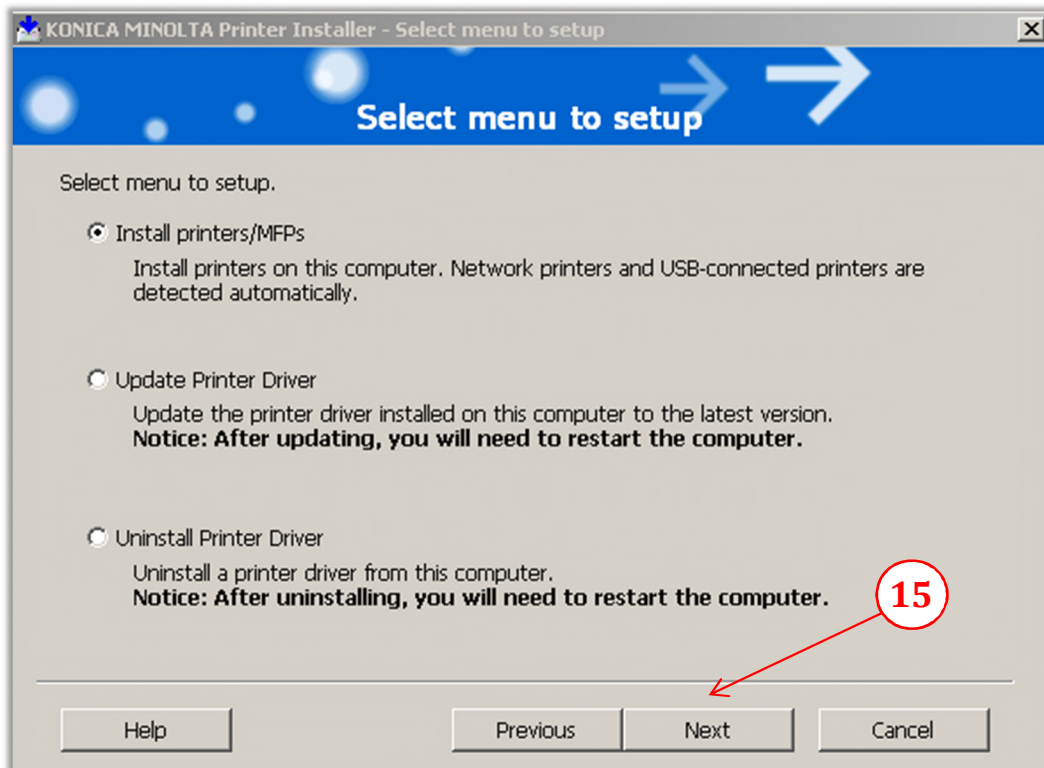


## Using the Konica Minolta driver installation utility,

- 14) From the *'License Agreement window'*, click *'Agree'*



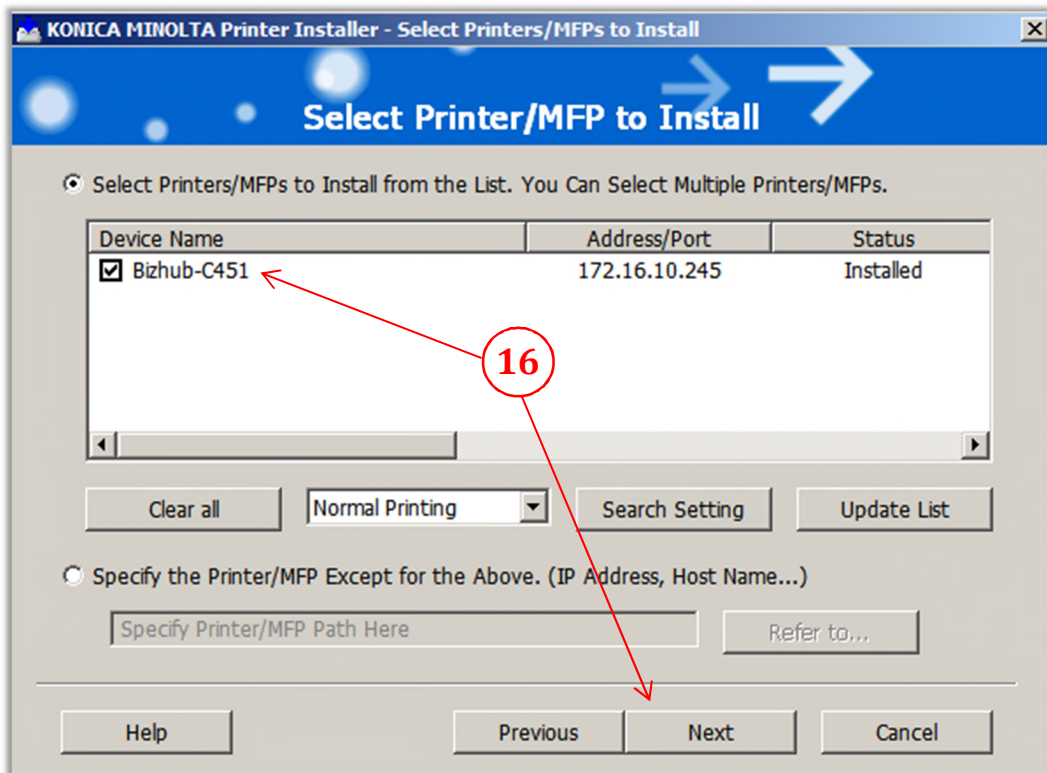
- 15) From the *'Printer Installer window'*, select *'Install printers/MFPs'*, then click *'Next'*





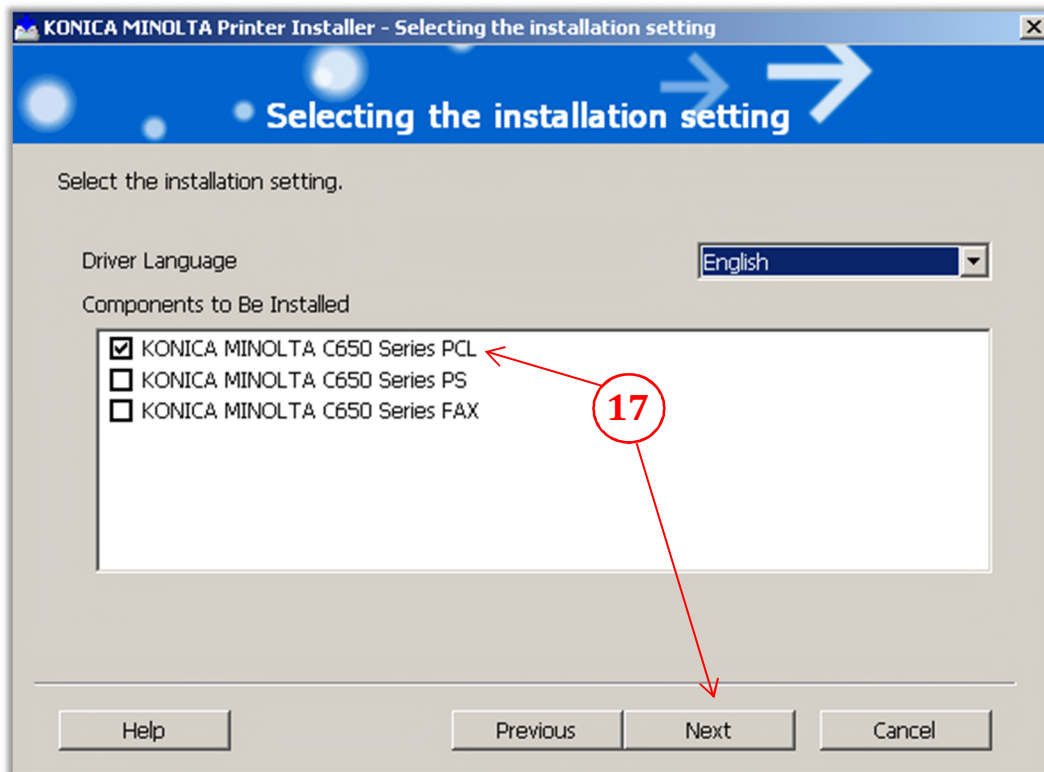
**The utility installer will now scan the current subnet for all online Bizhub MFP's**

- 16) Choose the device that the driver is to be installed, then select **'Next'**.



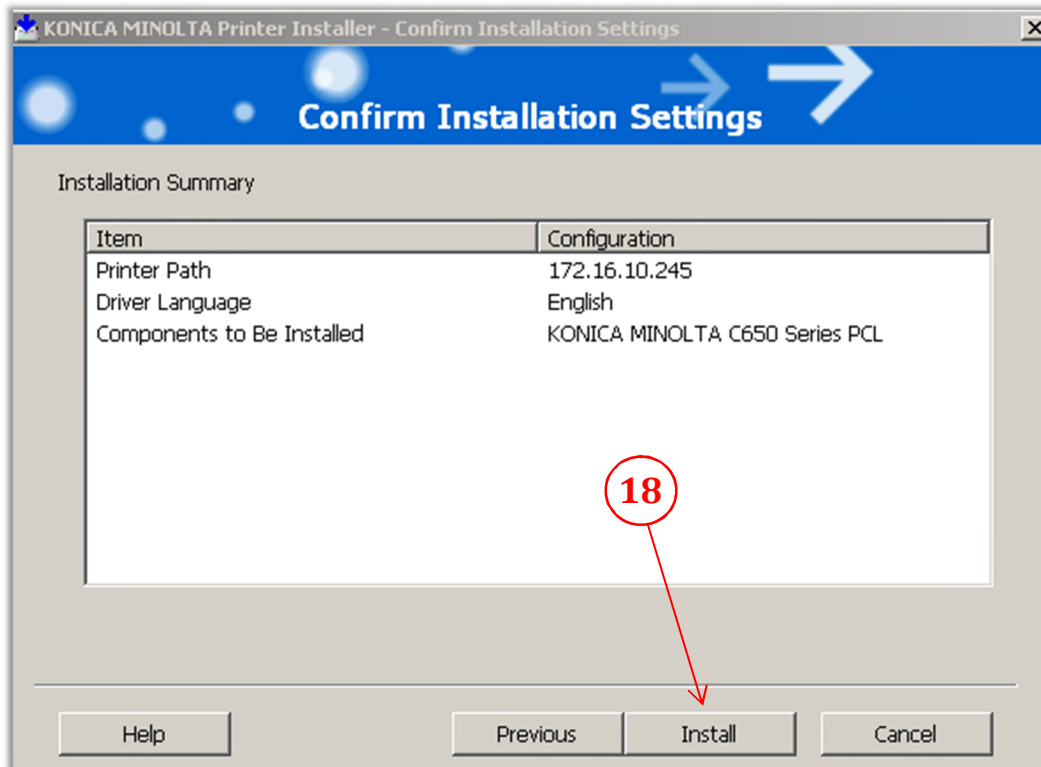
- 17) Select the **'PCL'** option then **uncheck** the **'PS,' Fax'**, then click **'Next'**.

**Note: It is highly recommended to uncheck 'XPS' (if shown), due to known compatibility issues!**

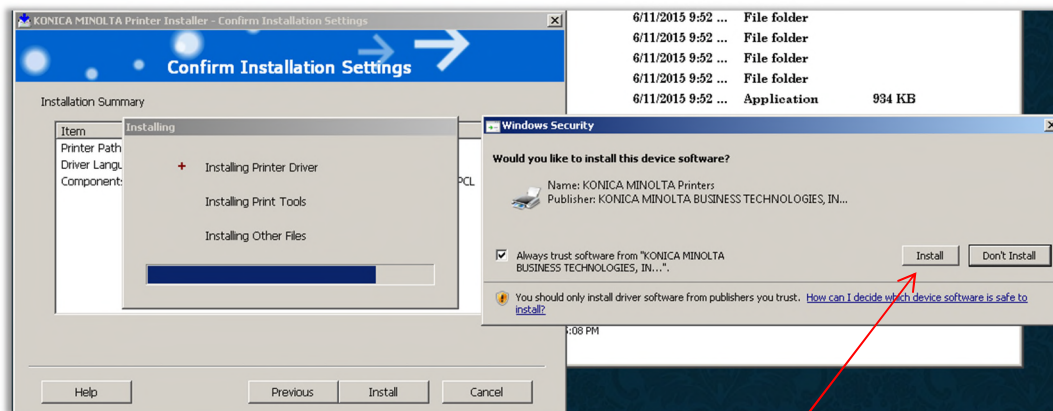


- 18) Verify the **'Installation Summary'** information & click **'Install'**

**Note: The model shown may be different as some drivers are used on multiple models.**

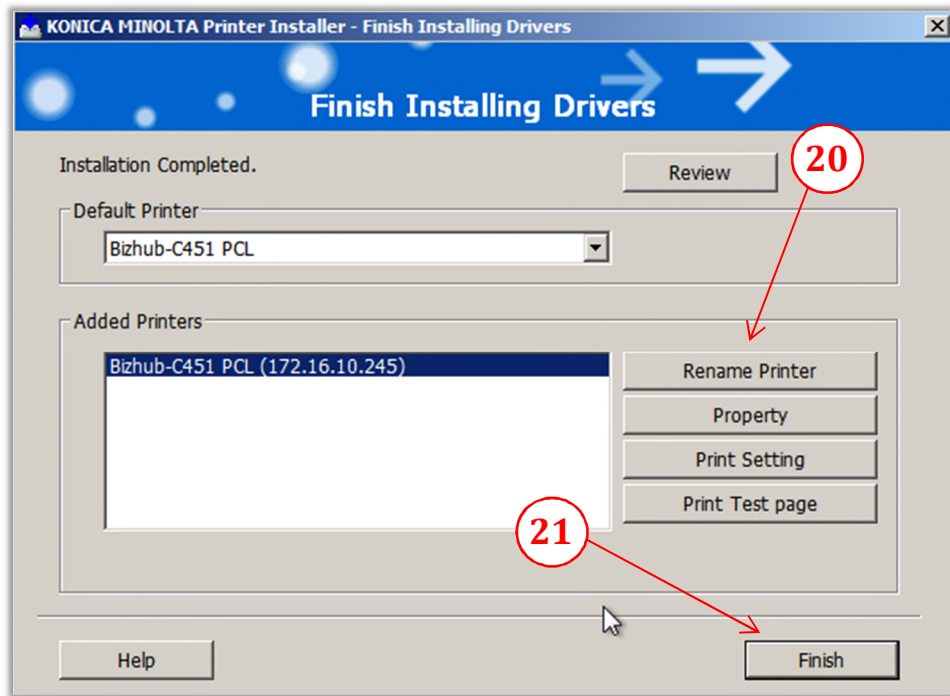


- 19) Some Windows versions may have a **'Security'** pop-up window, if so, select **'Install'**.



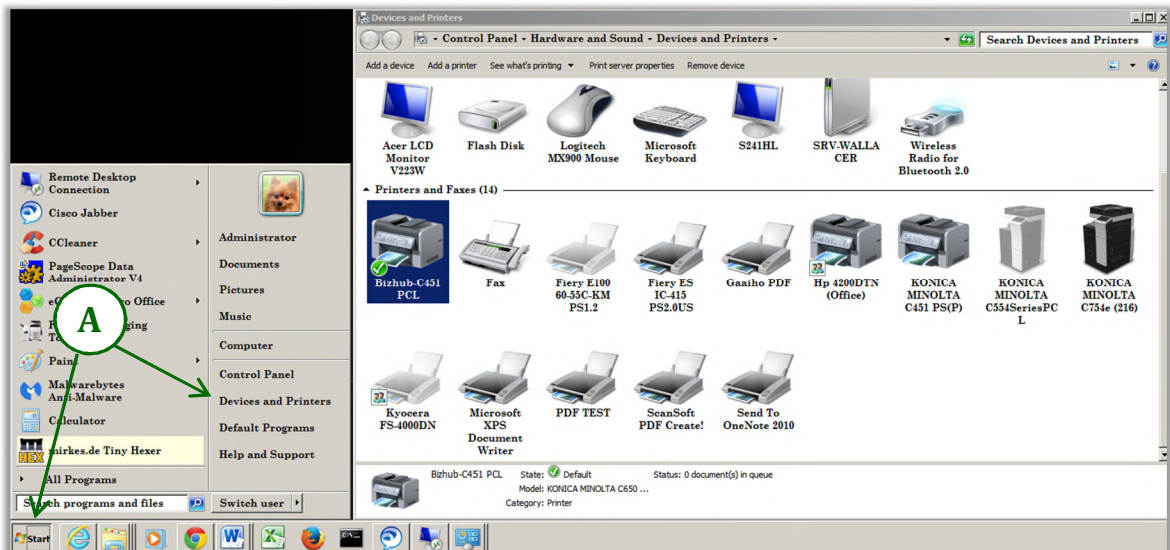


- 20) To change the printer name for the driver, select **'Rename Printer'** (Optional)
- 21) Click **'Finish'**.

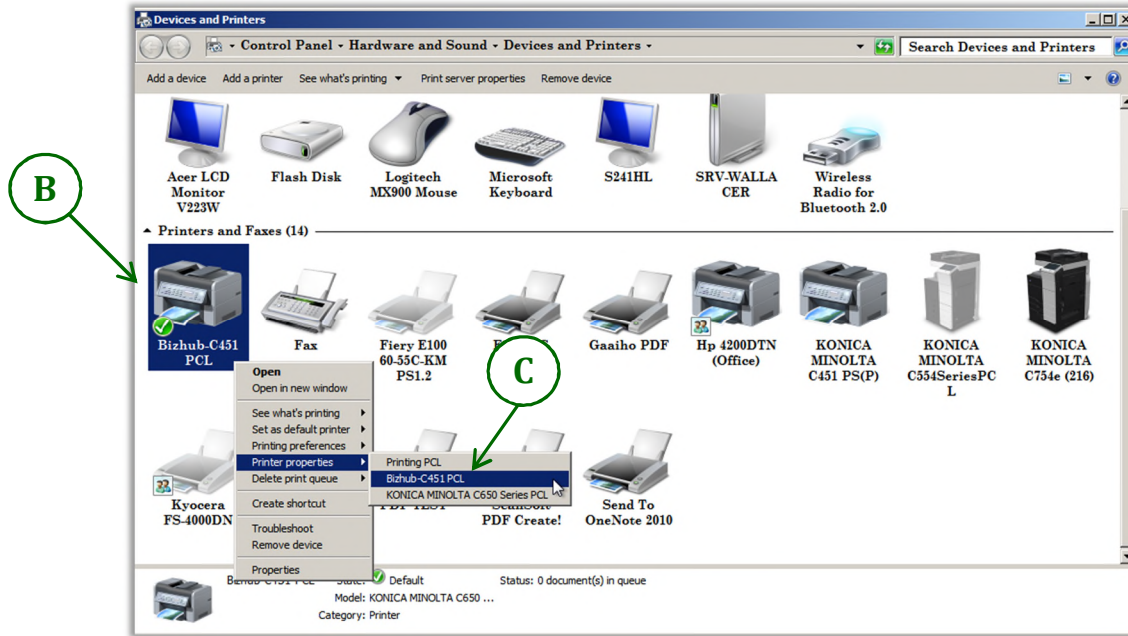


## CONFIGURING DEFAULT DRIVER SETTINGS.

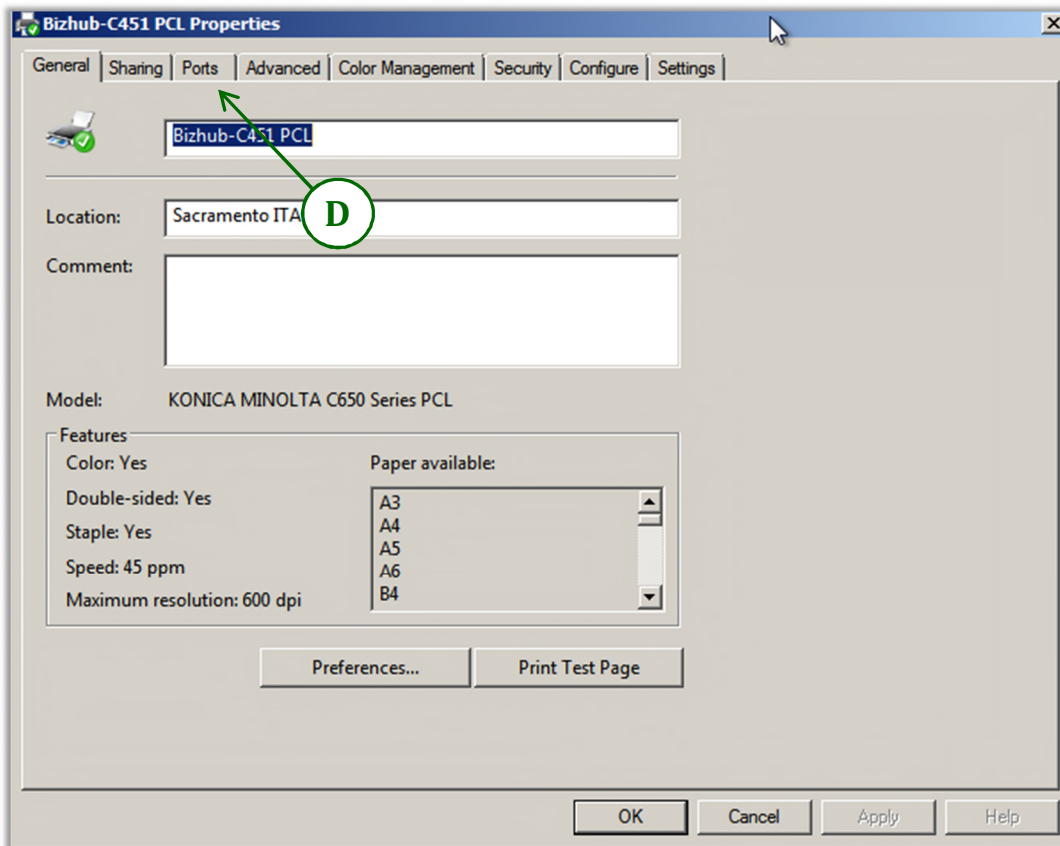
- A. Click **'Start'**, select **'Devices and Printers'**.



- B. Move the mouse cursor over the newly installed printer & **'right click'** the MFP icon.
- C. From the pop-up window, select **'Printer properties'**

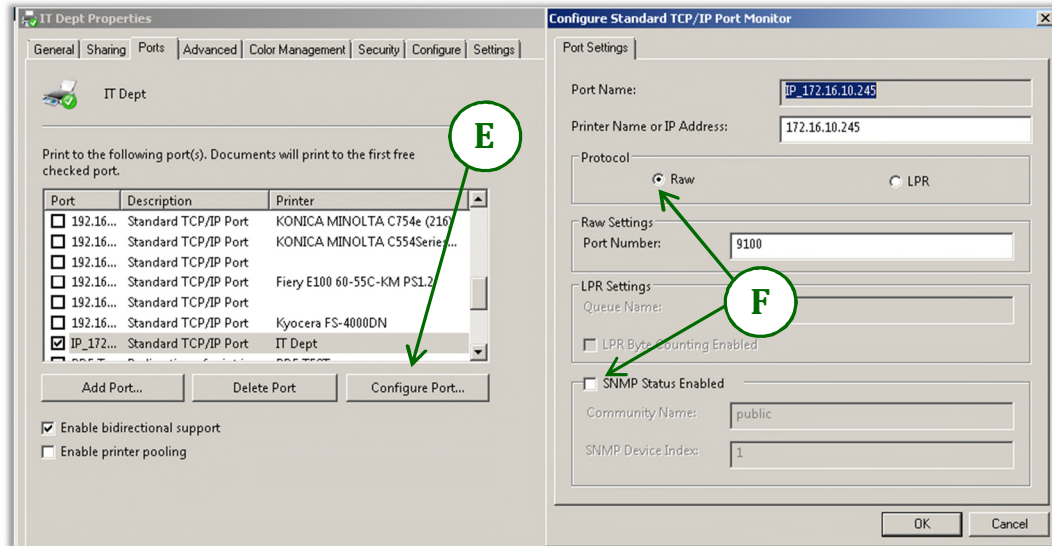


- D. From the **'PCL Properties'** window, select the **'Ports'** tab.



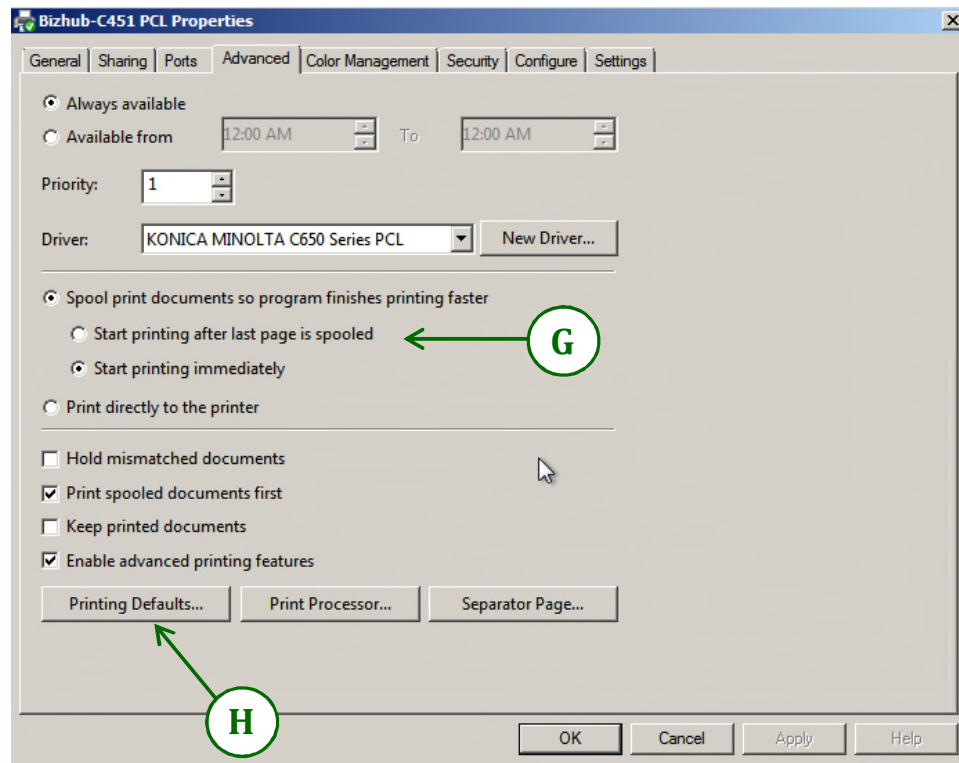
E. The highlighted port should be the newly installed driver. Select **'Configure Port'**.

F. Select **'Raw'** & Uncheck **'SNMP Status Enabled'**, then click **'OK'**

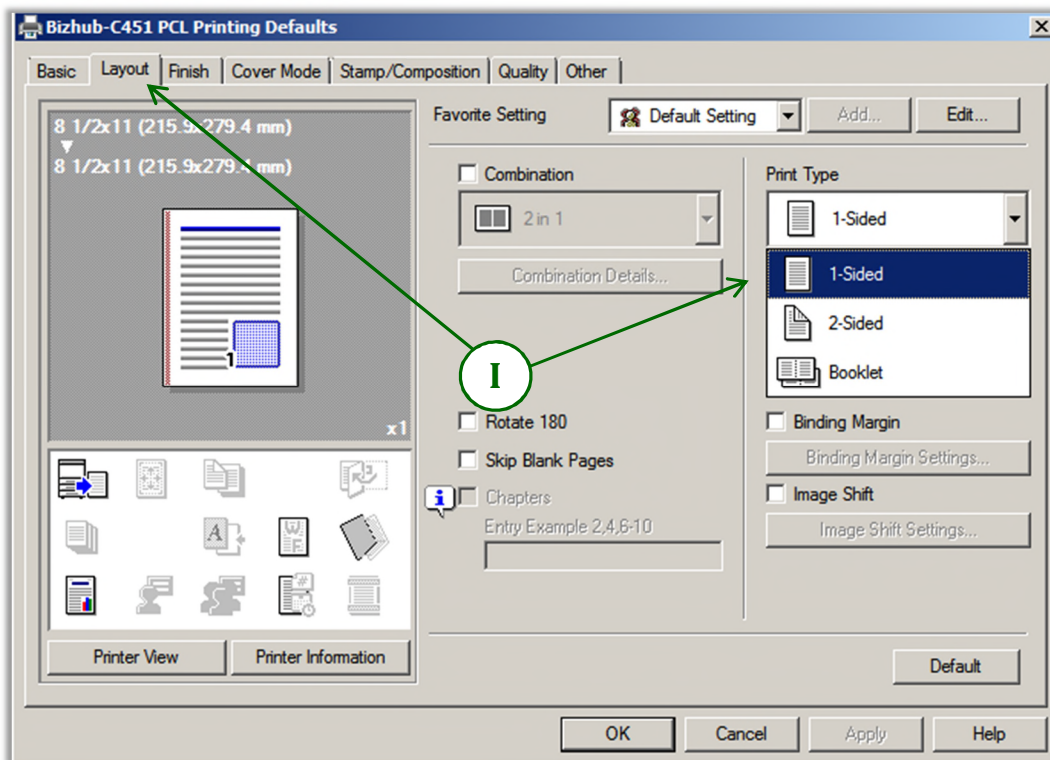


G. Next, select the **'Advanced'** tab; select **'Start printing after last page is spooled'**.

H. Select **'Printing Defaults'**.

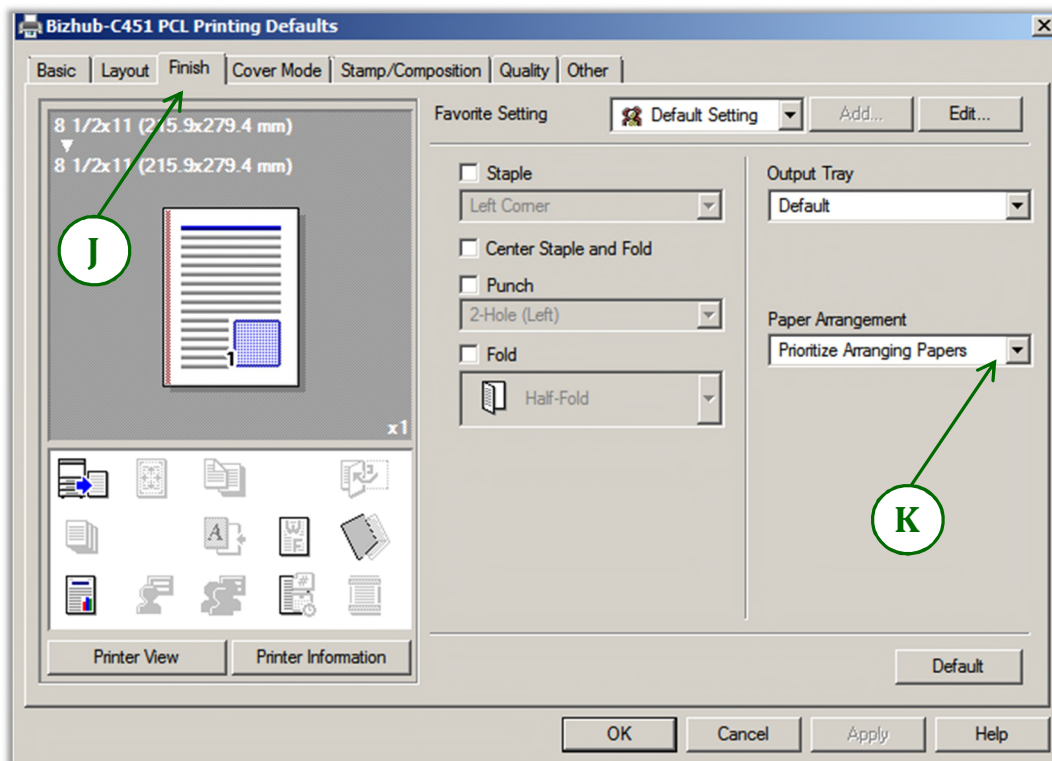


I. Select the **'Layout'** tab and choose **'1-Sided'** from the **'Print Type'** window.



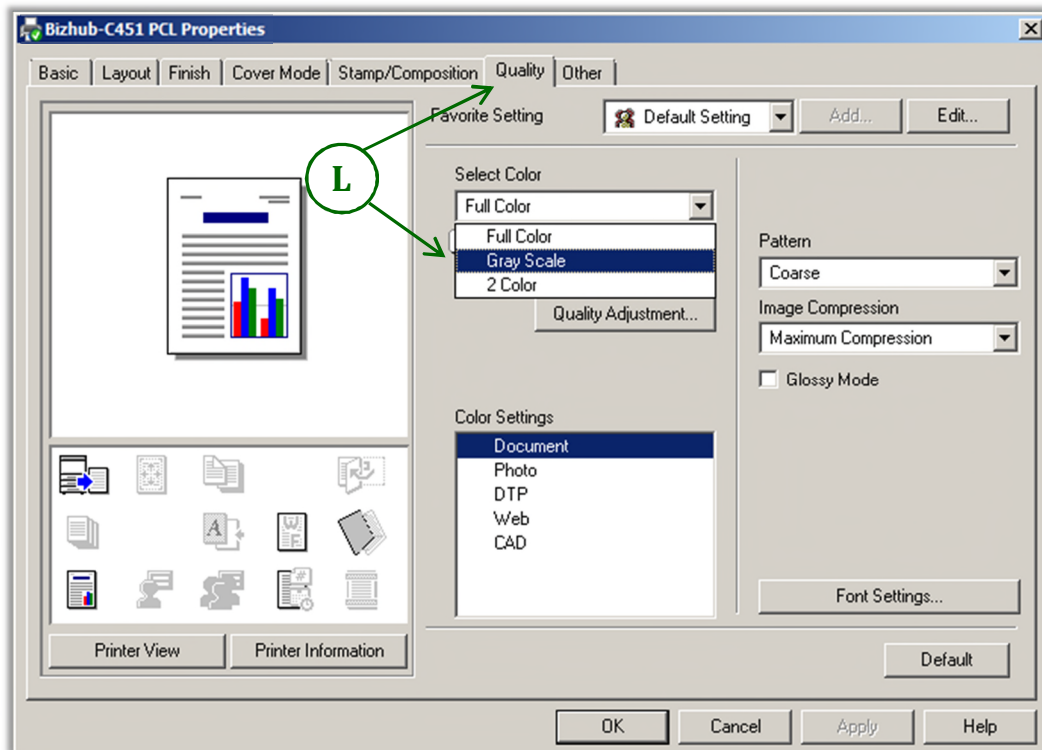
J. Next, choose the **'Finish'** tab and select the default option(s) for all print jobs.

K. Change **'Paper Arrangement'** to Productivity.





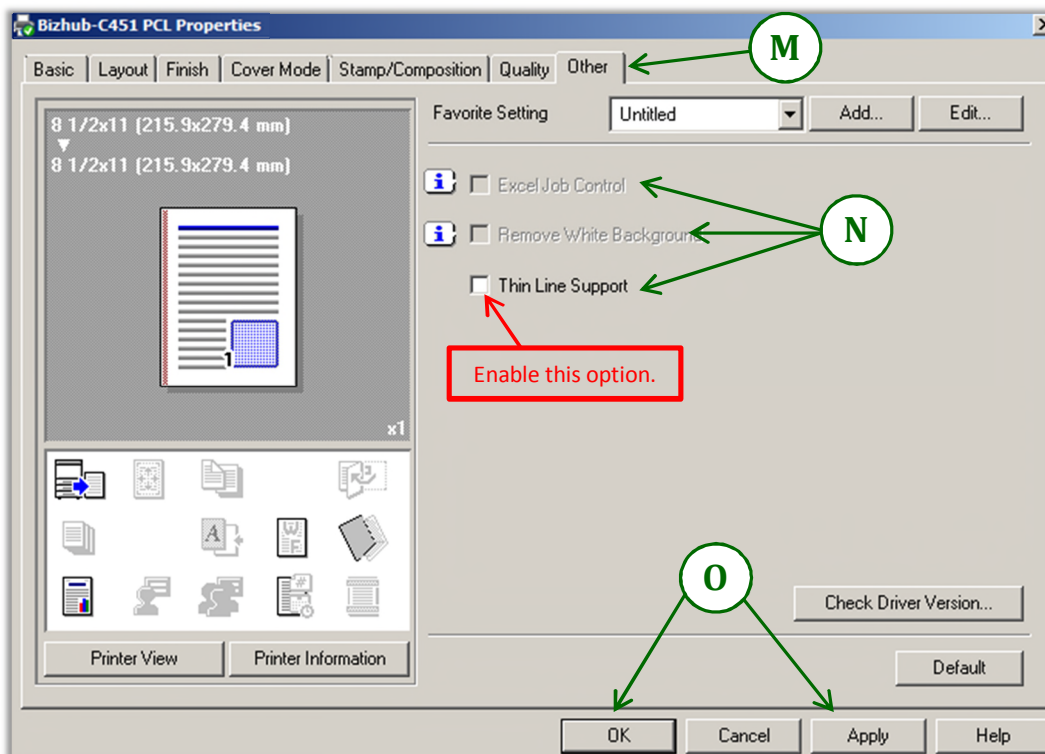
L. Select the **'Quality'** tab, and then choose **'Gray Scale'** from the **'Select Color'** window.



M. Select the **'Other'** tab, check to see any options are **'selected'**. If so, then

N. Check **'Thin Line Support'** and **Uncheck** **'Excel Job Control'**, **'Remove White Background'**

O. Click **'Apply'** then **'OK'**. (Note: The **'PCL Properties'** window should now be visible again.)



Finish by clicking **'OK'** on the from the **'PCL properties'** window.