

Microsoft Windows

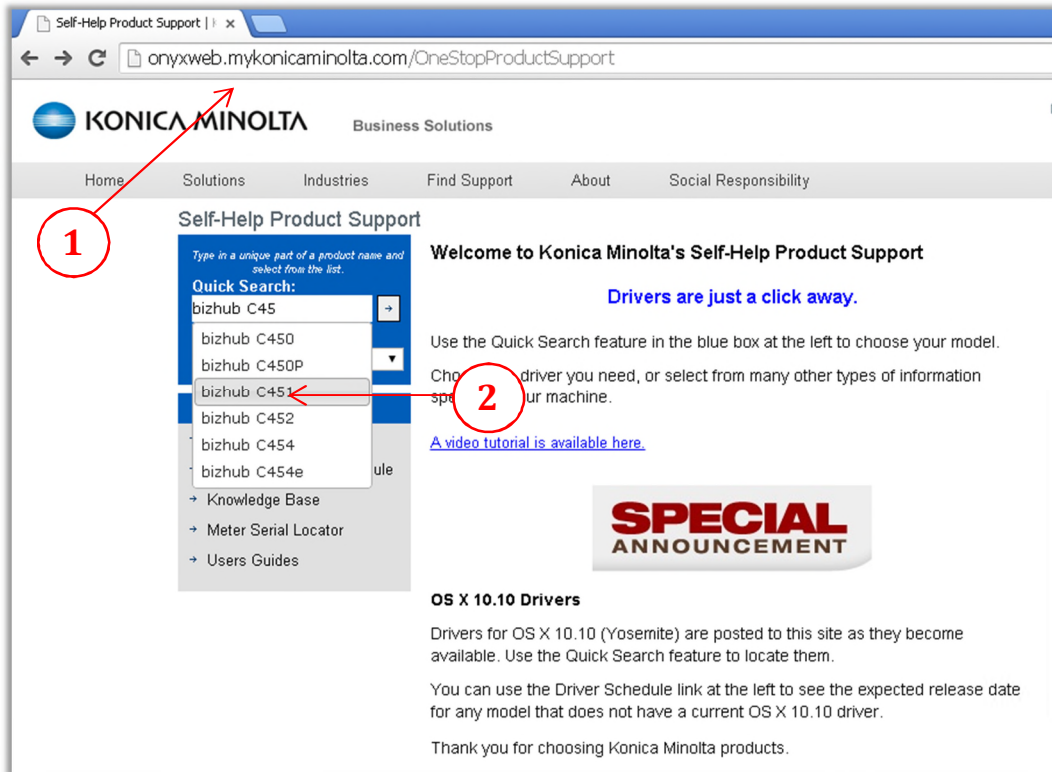
Drivers installation guide



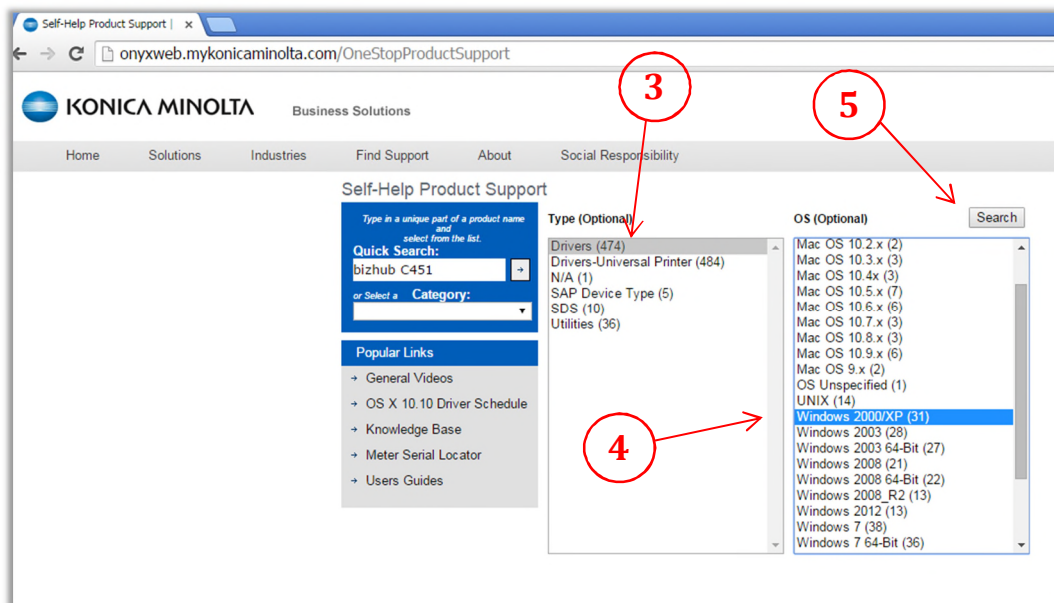
Caltronics Business Systems

Downloading Konica Minolta Drivers

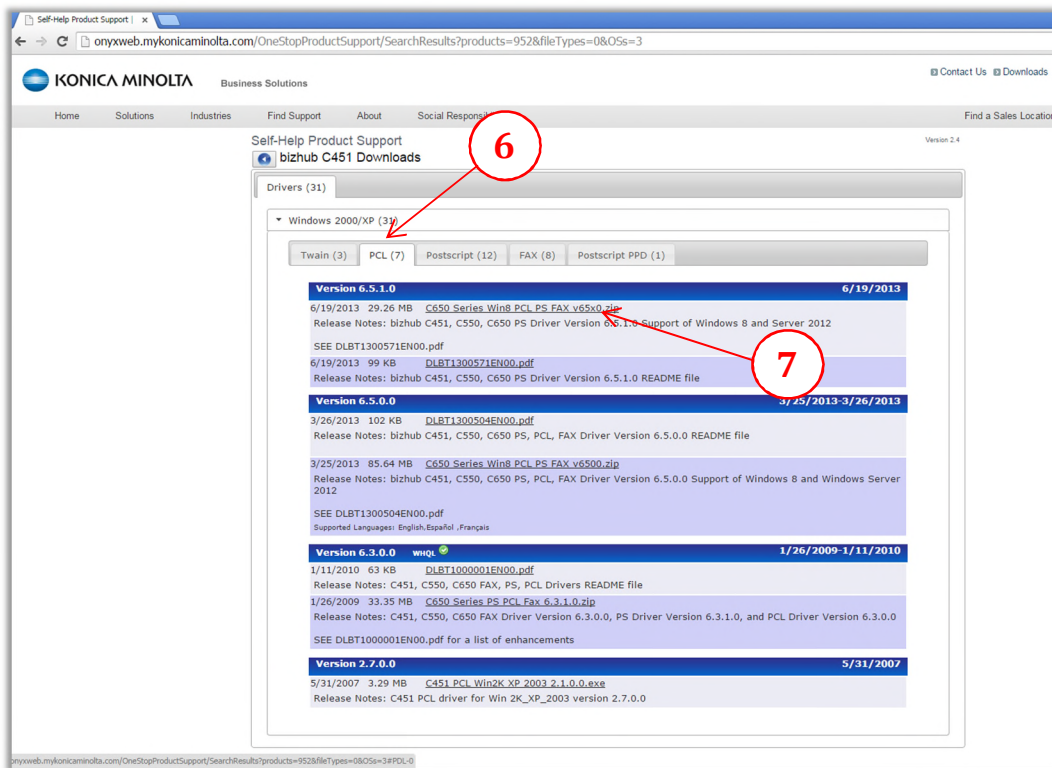
- 1) Go to <http://onyxweb.mykonicaminolta.com/OneStopProductSupport>
- 2) Enter the MFP model in the **'Quick Search'** field. Select the correct model if multiple exist.



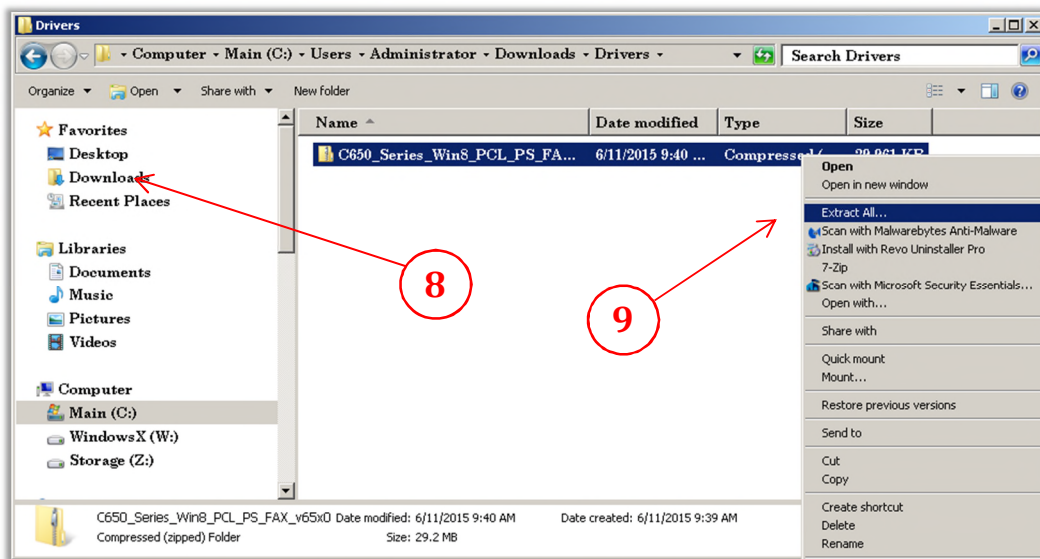
- 3) In the **'Type'** window pane, select drivers.
- 4) In the **'OS'** window pane, select the operating system in use.
- 5) Click **'Search'**.



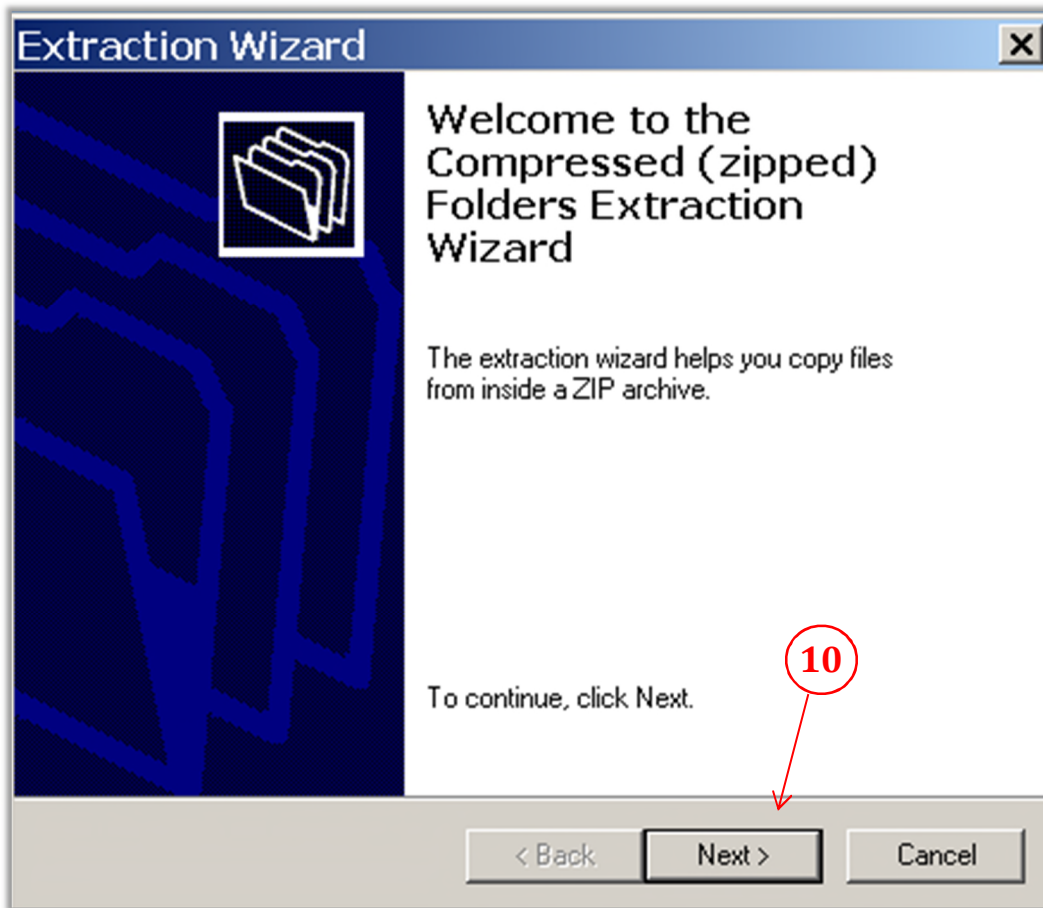
- 6) On the next screen, select the **'PCL'** tab.
- 7) Click on the driver link and download the desired driver. *(If unsure, choose the latest version)*



- 8) After the file downloads, locate the driver package file. *(Windows default location is the 'Downloads' folder)*
- 9) **'Right click'** on the driver package and click **'Extract All'**



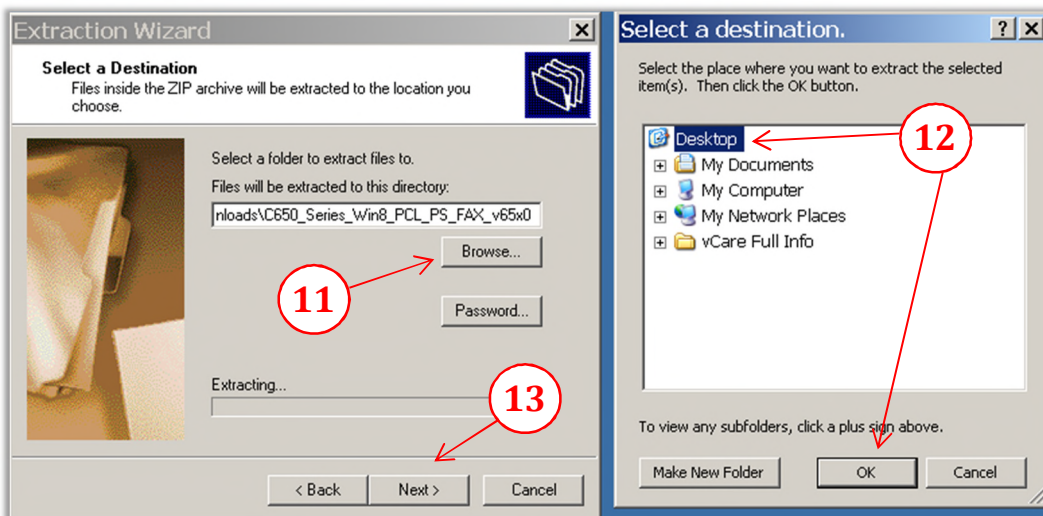
10) In the **'Extraction Wizard'** window, click **'Next'**



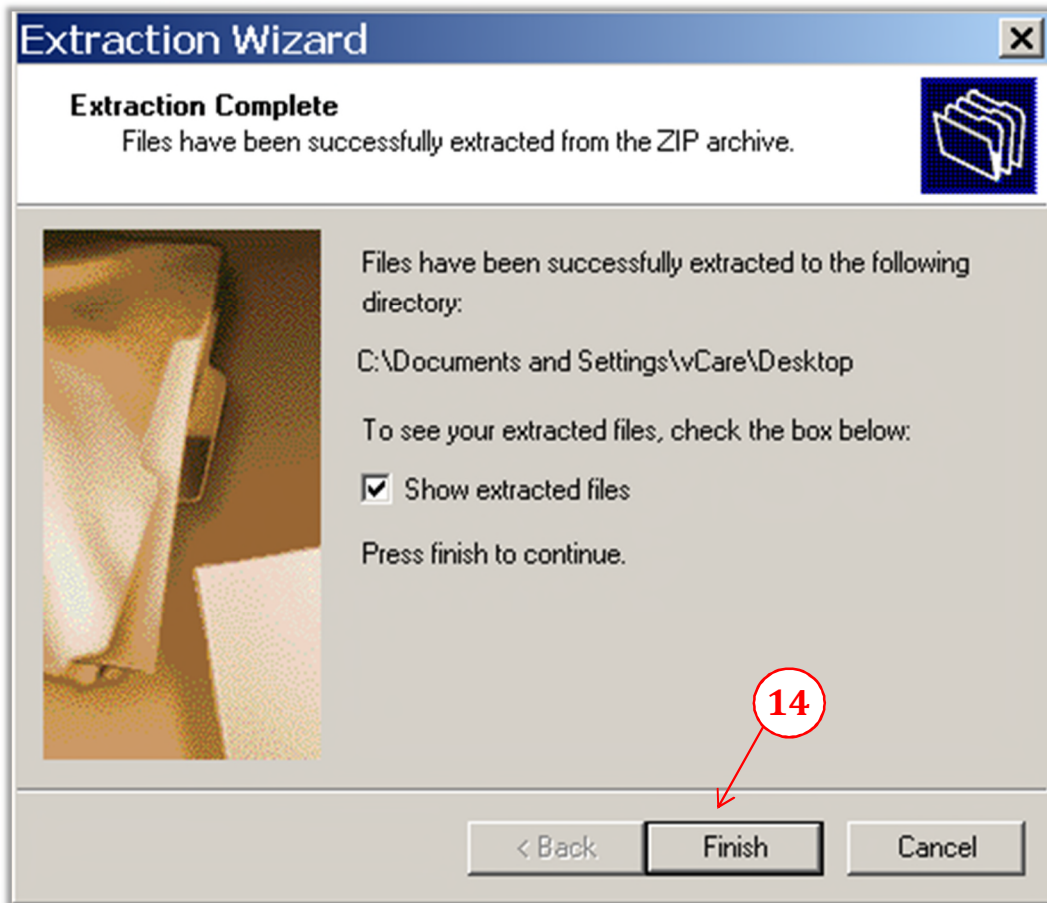
11) Click on **'Browse'**.

12) Select **'Desktop'**, then **'OK'**,

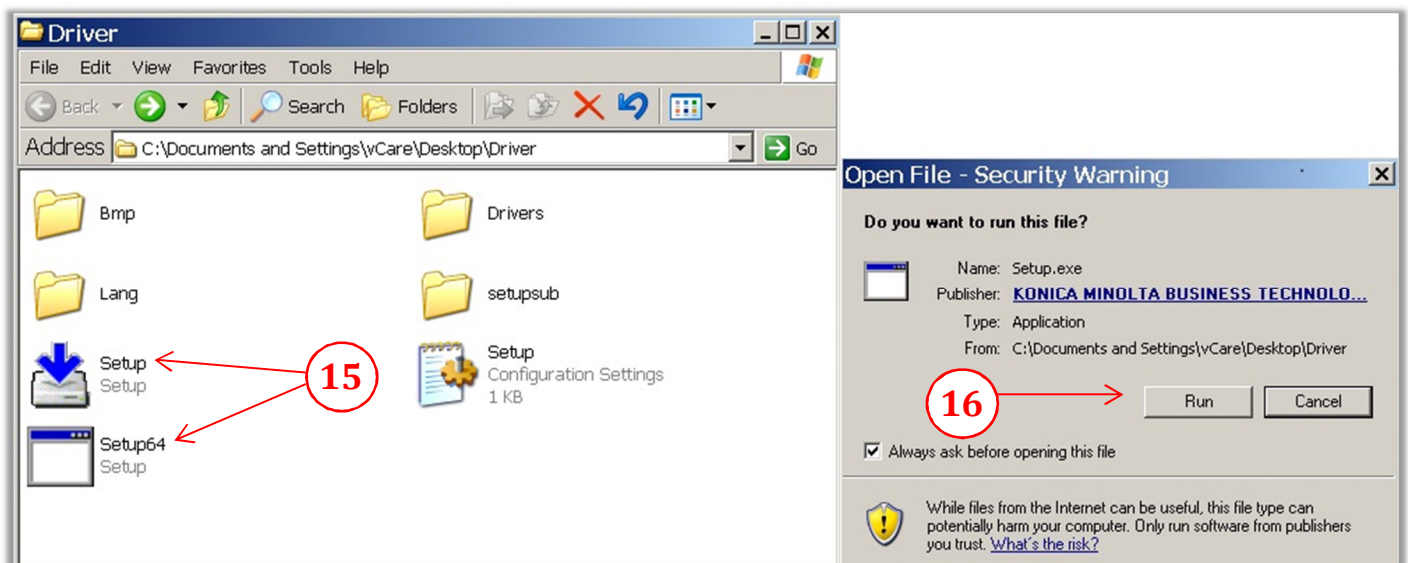
13) Select **'Next'**.



- 14) Click **'Finish'**.

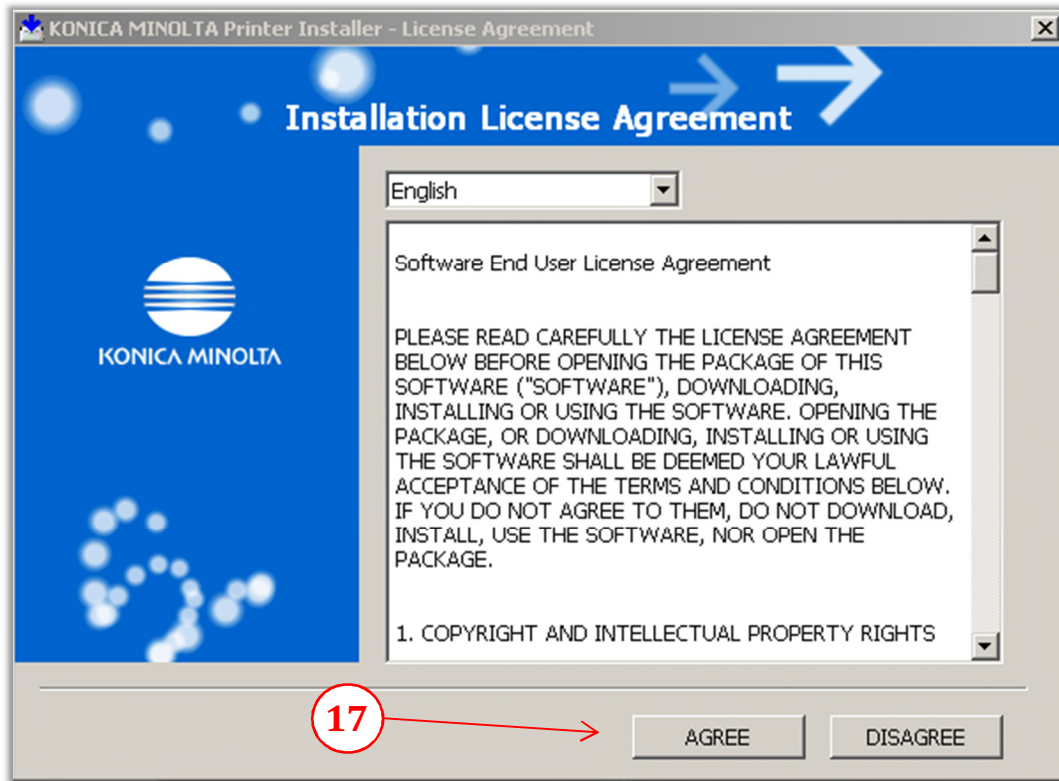


- 15) After extracting all files, a newly open window will appear. Locate the two **'Setup'** files & **'Double click'** the version for the correct OS installed. *(32bit or 64bit) --64bit is rarely used*
- 16) On the **'Security Warning'** pop-up window, click **'Run'**

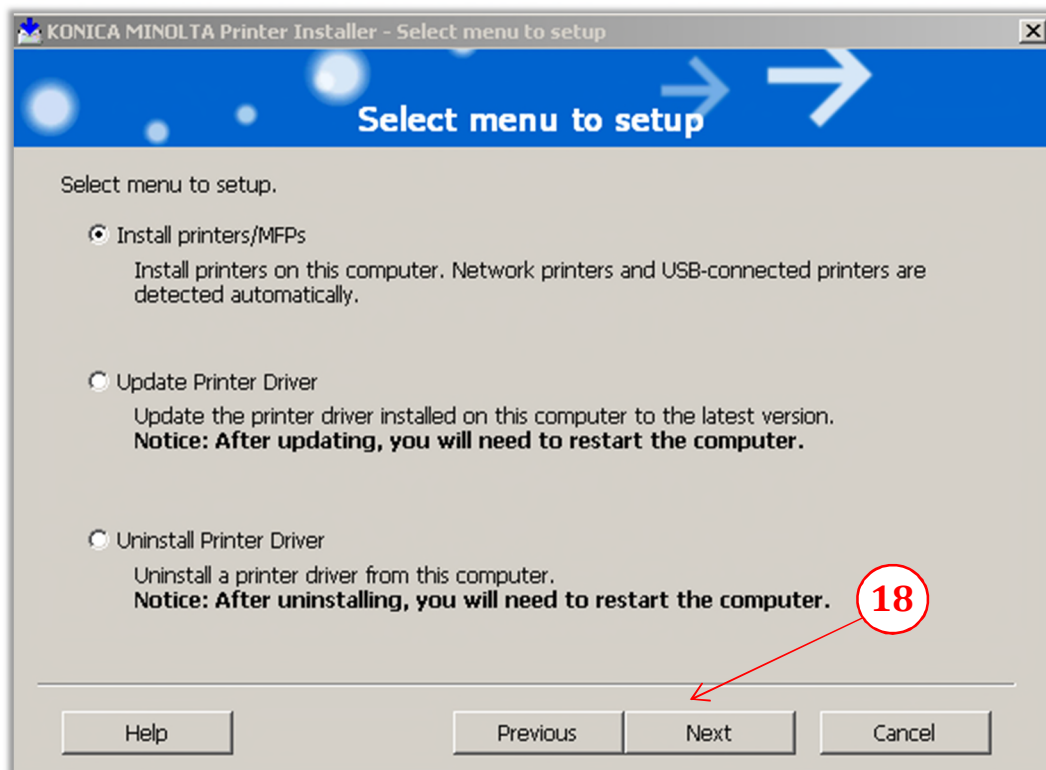


Using the Konica Minolta driver installation utility,

- 17) From the *'License Agreement window'*, click *'Agree'*

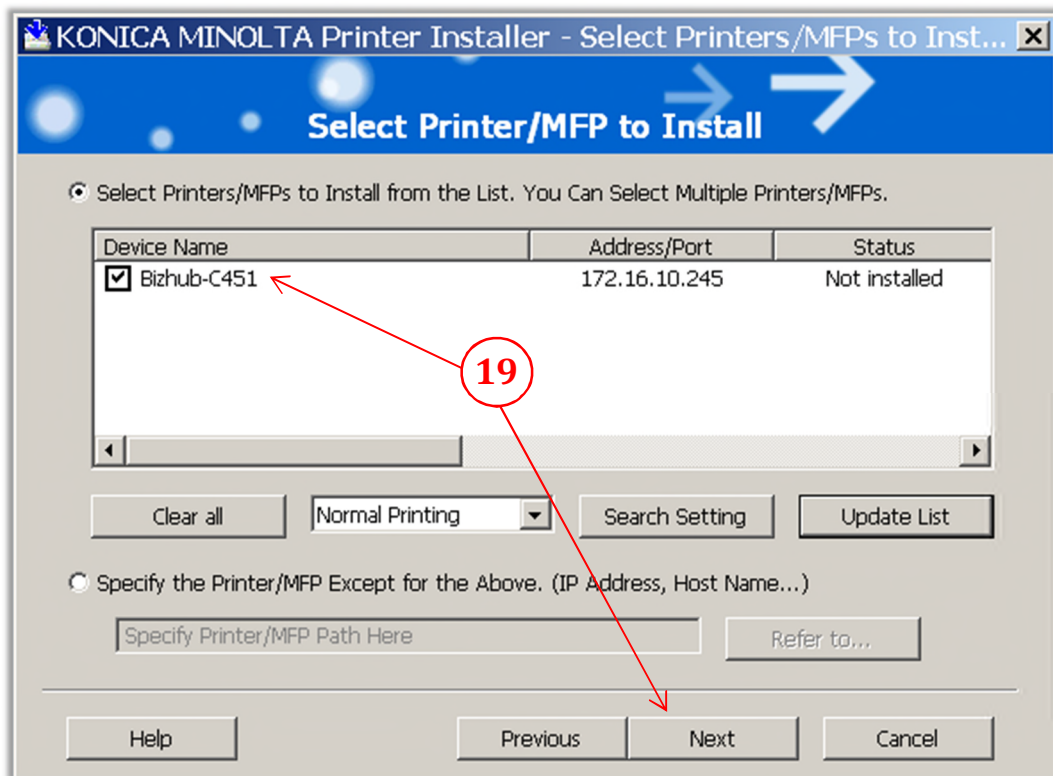


- 18) From the *'Printer Installer window'*, select *'Install printers/MFPs'*, then click *'Next'*



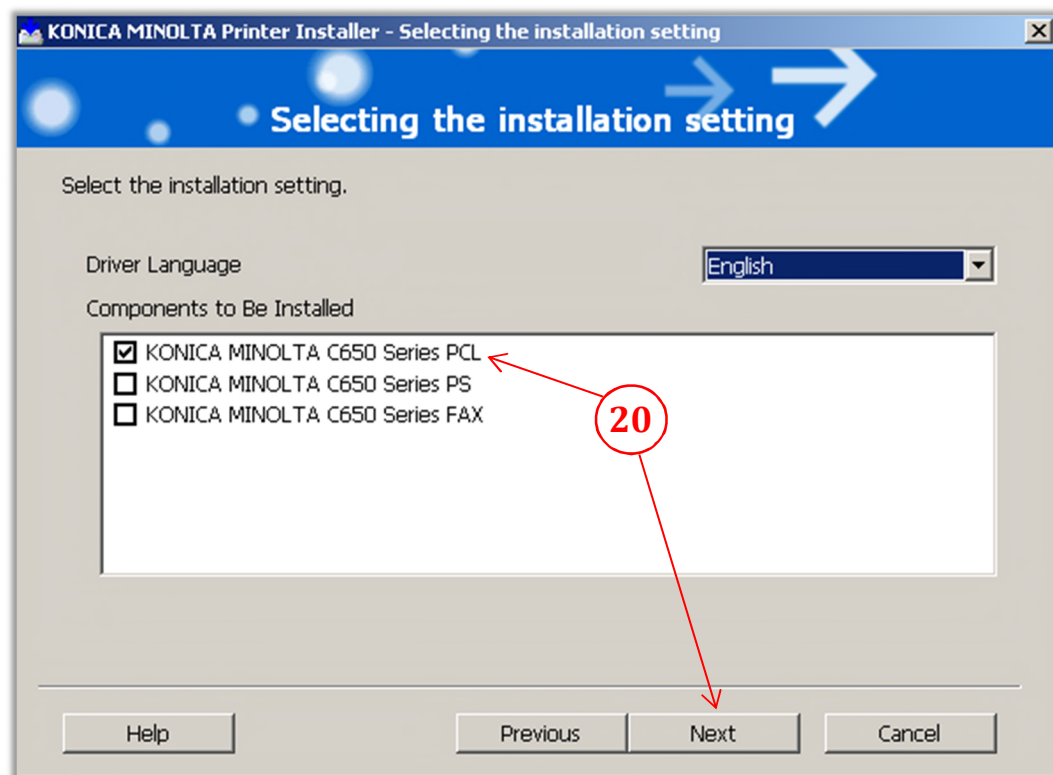
The utility installer will now scan the current subnet for all online Bizhub MFP's

- 19) Choose the device that the driver is to be installed, and then select **'Next'**.



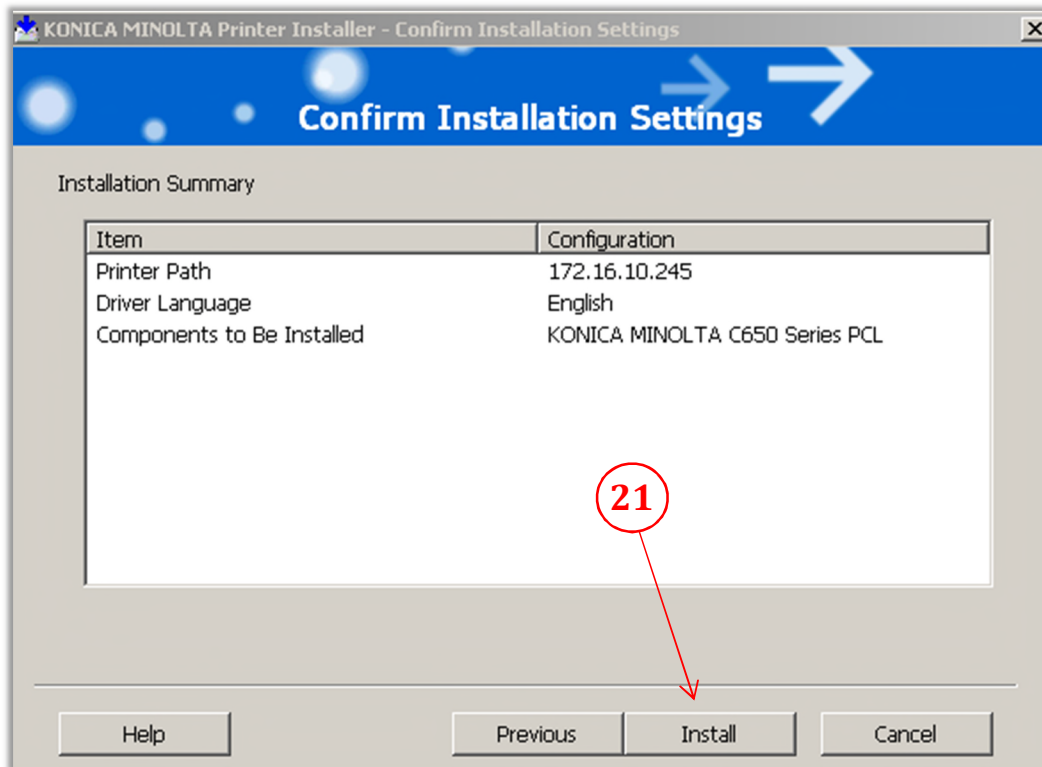
- 20) Select the **'PCL'** option then **uncheck** the **'PS', 'Fax'**, then click **'Next'**.

Note: It is highly recommended to uncheck 'XPS' (if shown), due to known compatibility issues!

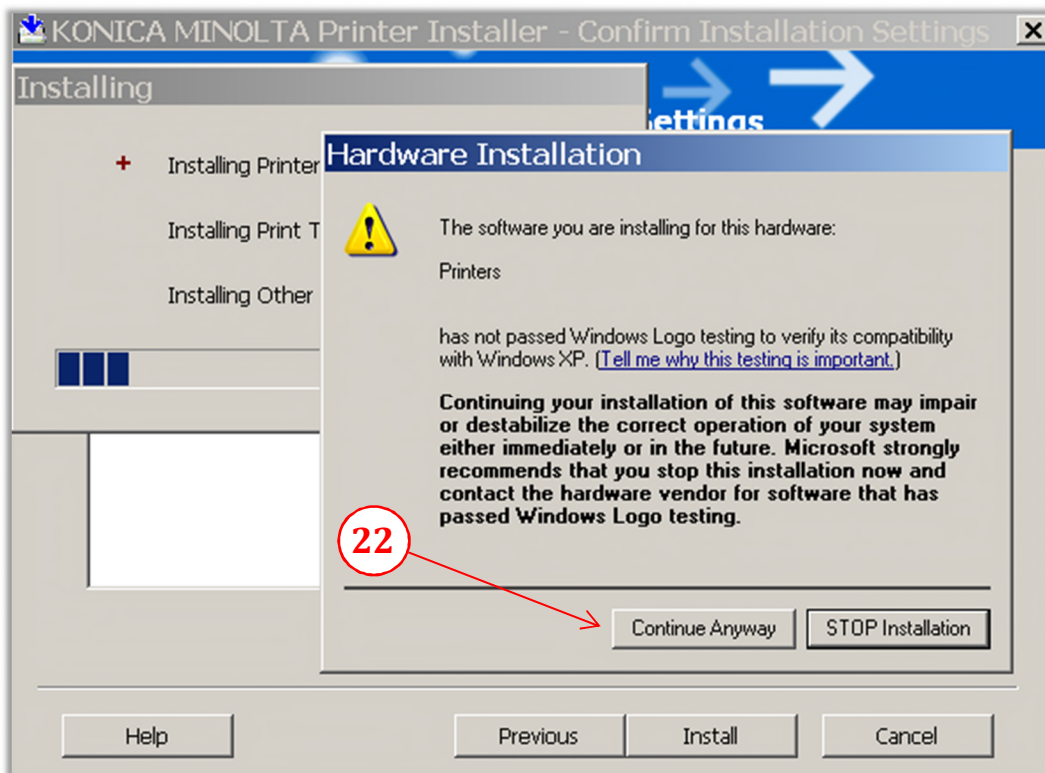


21) Verify the **'Installation Summary'** information & click **'Install'**

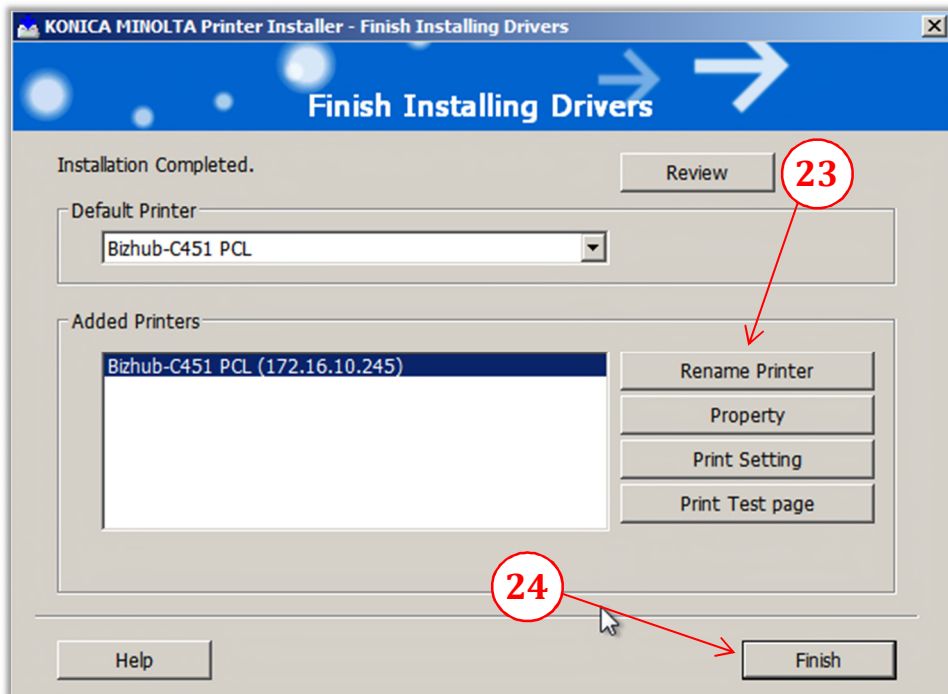
Note: The model shown may be different as some drivers are used on multiple models.



22) A **'Security'** pop-up window may appear, if so select **'Continue Anyway'**.

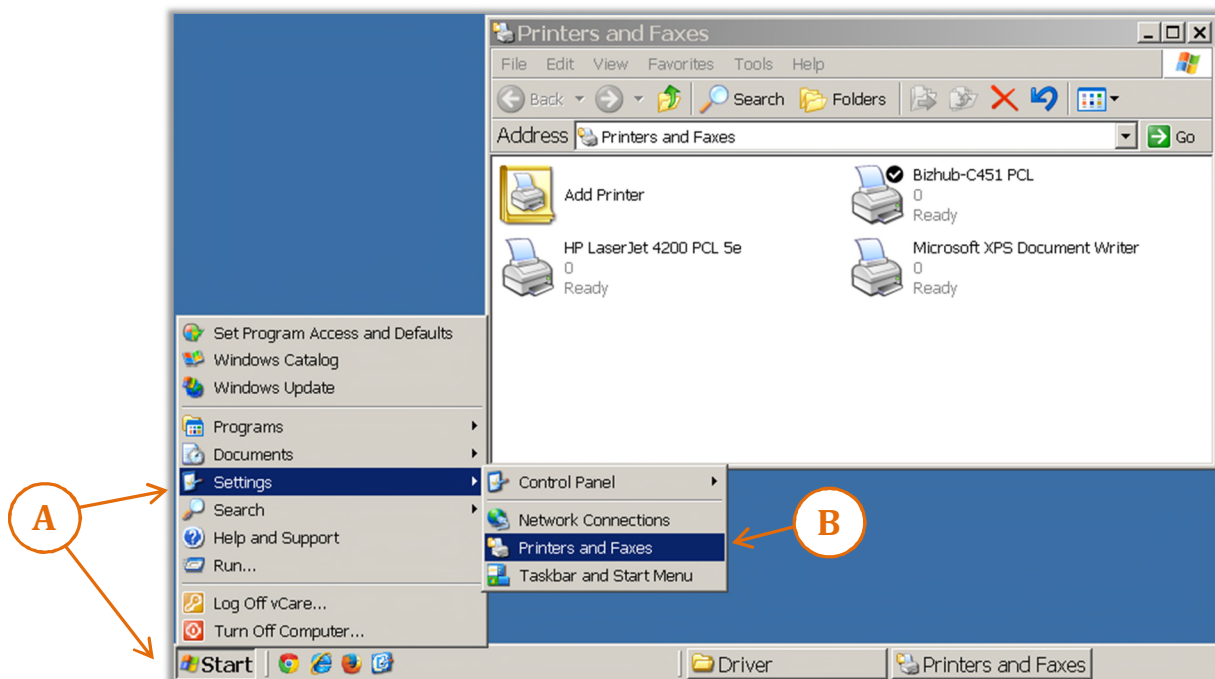


- 23) To change the printer name for the driver, select **'Rename Printer'** (Optional)
- 24) Click **'Finish'**.

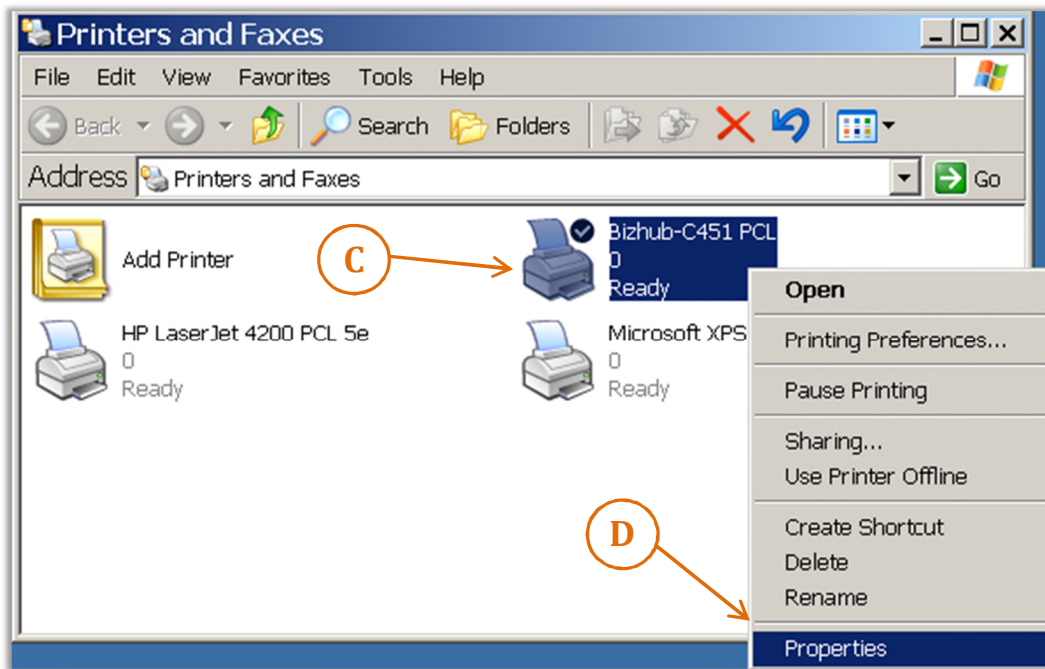


CONFIGURING DEFAULT DRIVER SETTINGS.

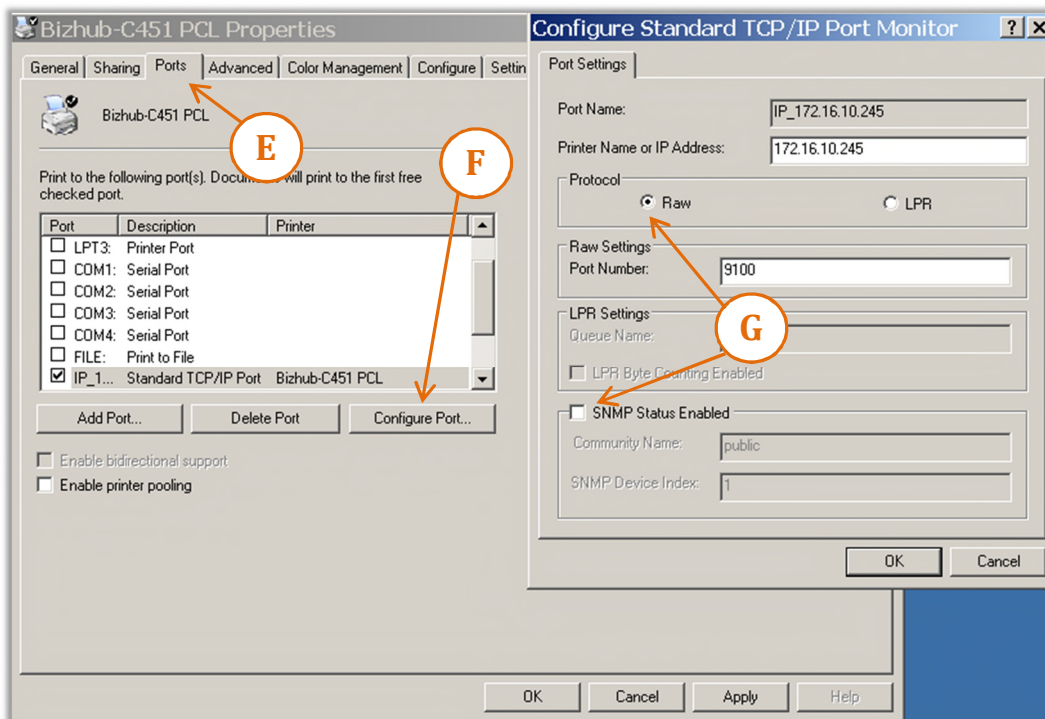
- A. Click **'Start'**, select **'Settings'**.
- B. Select **'Printers and Faxes'**.



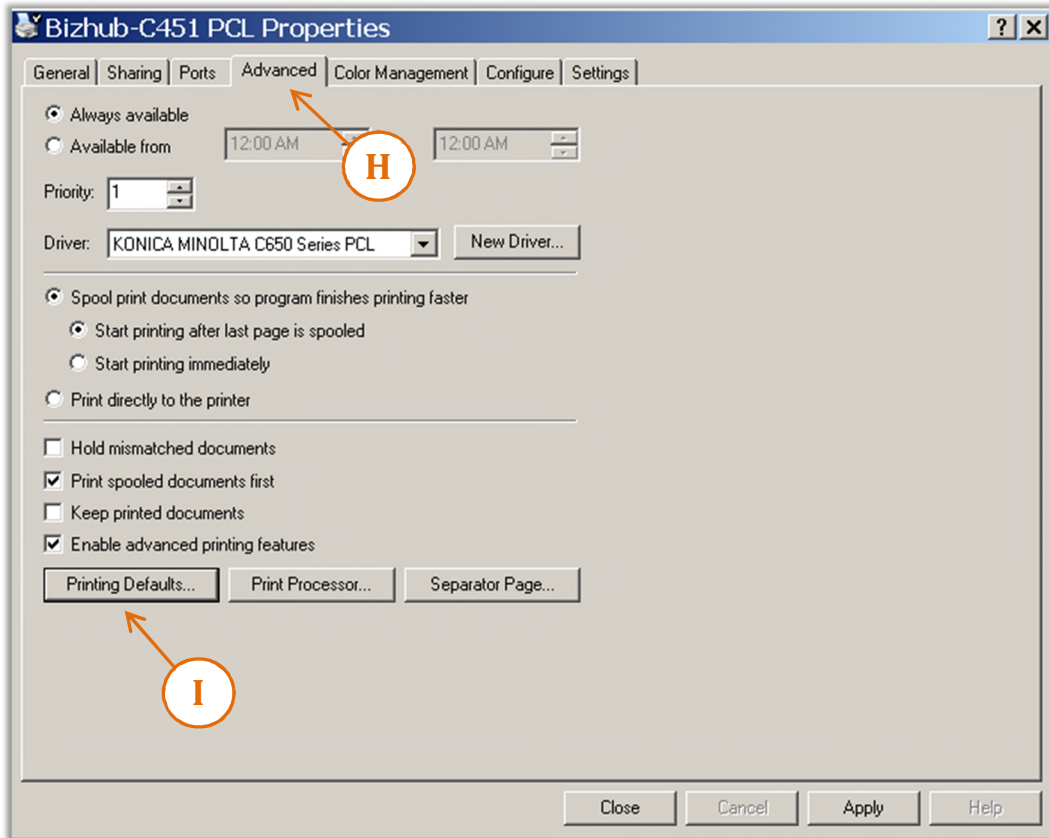
- C. Move the cursor over the newly installed printer & **'right click'** the MFP icon.
- D. From the pop-up window, select **'Printer properties'**



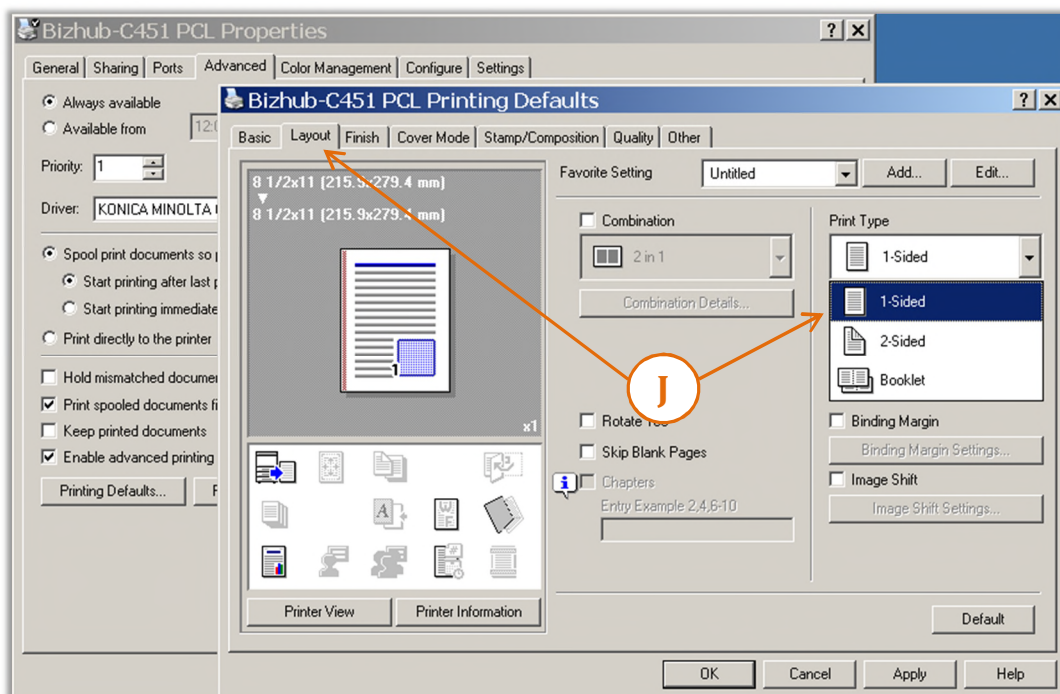
- E. From the 'PCL Properties' window, select the **'Ports'** tab.
- F. The highlighted port should be the newly installed driver. Select **'Configure Port'**.
- G. Select **'Raw'** & Uncheck **'SNMP Status Enabled'**, then click **'OK'**



- H. Next, select the **'Advanced'** tab, **'Start printing after last page is spooled'**.
- I. Select **'Printing Defaults'**'.

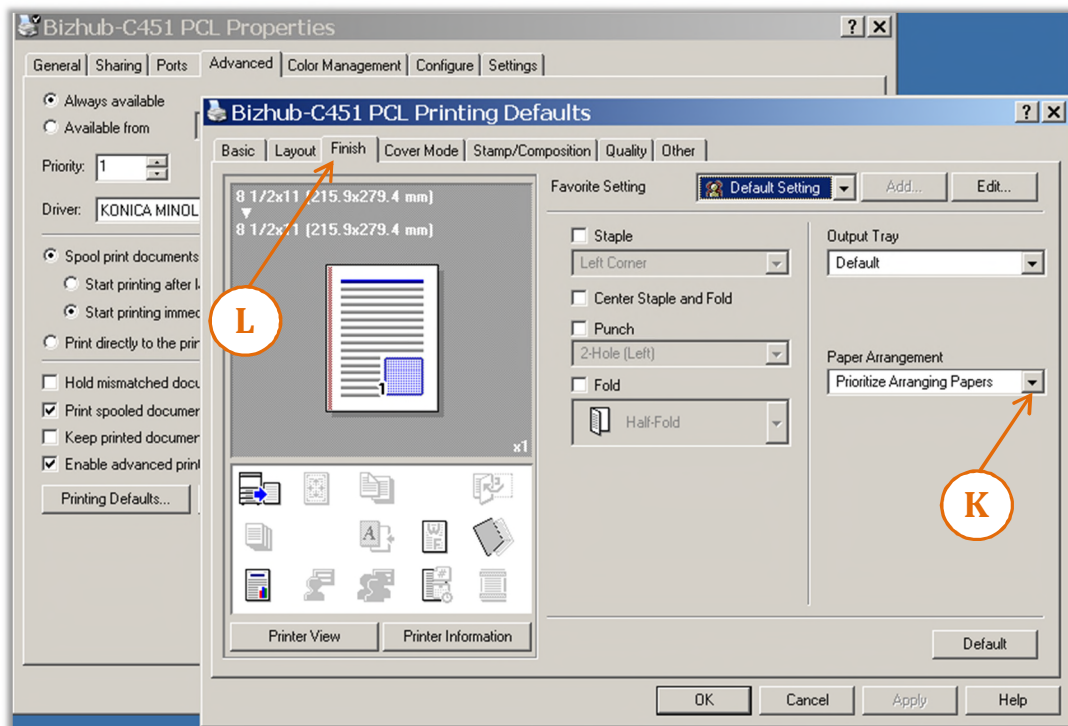


- J. Select the **'Layout'** tab and choose **'1-Sided'** from the **'Print Type'** window.

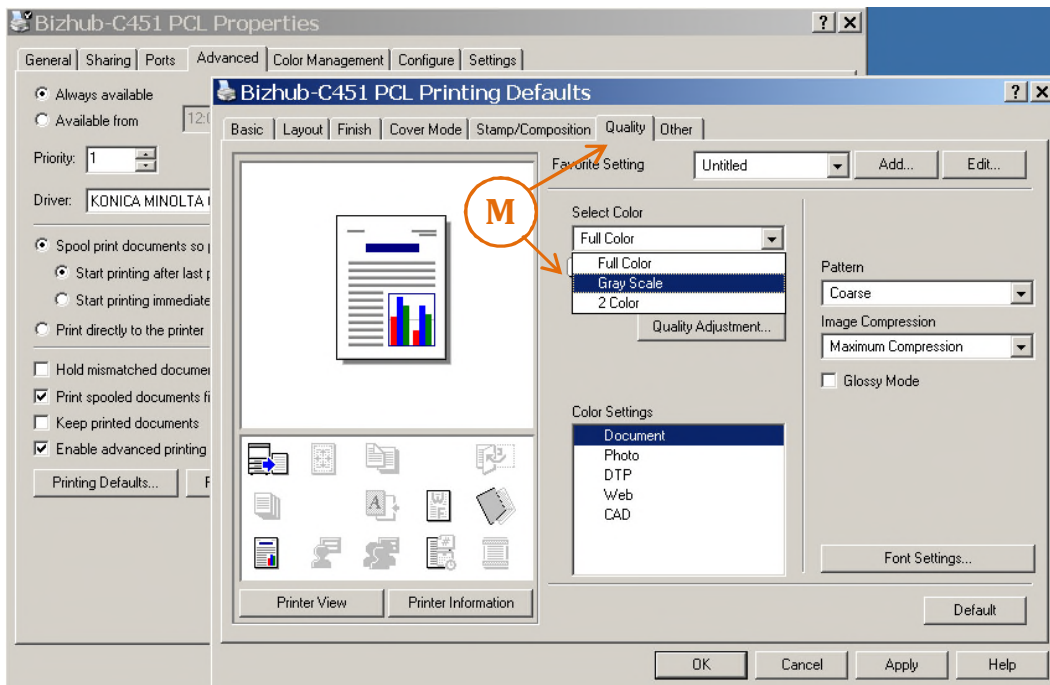


K. Change **'Paper Arrangement'** to Productivity.

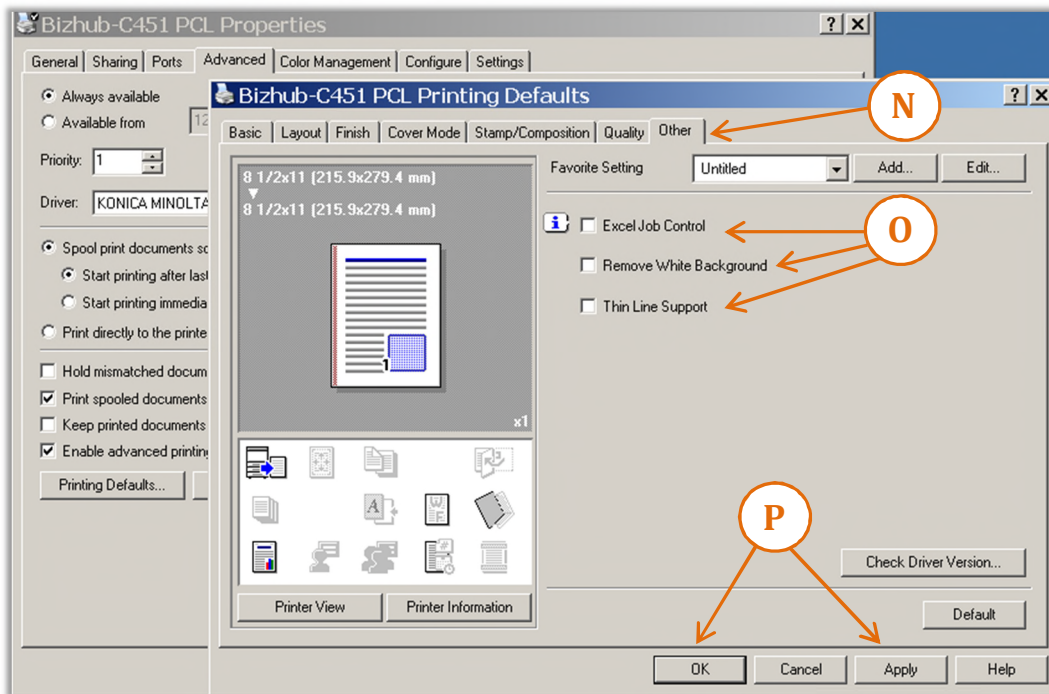
L. Next, choose the **'Finish'** tab and select the default option(s) for all print jobs.



M. Select the **'Quality'** tab, and then choose **'Gray Scale'** from the **'Select Color'** window.



- N. Select the **'Other'** tab, check to see any options are **'selected'**. If so, then
- O. Check **'Thin Line Support'** and **Uncheck 'Excel Job Control', 'Remove White Background'**
- P. Click **'Apply'** then **'OK'**. *(Note: The 'PCL Properties' window should now be visible.)*



- Q. Finish by clicking **'Close'** on the from the 'PCL properties' window.

