

---

# HDD TWAIN driver

## *User's Guide*

---

---

# Contents

## 1 Introduction

1.1	System requirements .....	1-1
-----	---------------------------	-----

## 2 Installing the HDD TWAIN Driver

2.1	Installation procedure .....	2-1
	To install the software .....	2-1
2.2	Uninstalling .....	2-1

## 3 Importing Images

3.1	To import images .....	3-1
	Import procedure .....	3-1
3.2	With user authentication .....	3-5
	To perform the user authentication operation .....	3-5
3.3	With account track .....	3-7
	To perform the account track operation .....	3-7
3.4	Main Window Settings .....	3-8
3.5	Main Window Views .....	3-10
	List View .....	3-10
	Thumbnail View .....	3-11
3.6	Specifying Settings from the Settings Dialog Box (Scan Tab) ....	3-12
3.7	Specifying Settings from the Settings Dialog Box (Image Enhancement Tab) .....	3-13

## 4 Selecting Scanning Devices

	To select a device .....	4-1
--	--------------------------	-----

## 5 Registering New Scanning Devices

	To register a device .....	5-1
--	----------------------------	-----

5.1	Checking Authentication Information .....	5-5
-----	---	-----

## 6 Changing the Scanned Box

	To change the scanned box .....	6-1
--	---------------------------------	-----

## About this Product

The HDD TWAIN driver allows document data saved in this machine's boxes from Scan mode or Fax mode to be imported into an image-processing application on the computer, where the data can be processed or edited.

In addition, boxes can easily be accessed if frequently used box numbers and passwords are programmed.

The box data can also be deleted when the document is imported.

## Trademarks and registered trademarks

### Trademark acknowledgements

Microsoft® and Windows® are either registered trademarks or trademarks of Microsoft Corporation in the United States and/or other countries.

RSA® is a registered trademark or trademark of RSA Security Inc. RSA BSAFE® is a registered trademark or trademark of RSA Security Inc. in the United States and/or other countries.



### License information

This product includes RSA BSAFE Cryptographic software from RSA Security Inc.

All other company and product names are either trademarks or registered trademarks of their respective companies.

### Dialog boxes

The dialog boxes shown in this manual are those that appear in Windows XP.



...

**Note**

*The dialog boxes that appear in this document may differ from those that appear on your computer, depending on the installed devices and specified settings.*



...

**Note**

*Unauthorized reproduction, translation or duplication of this document, whether in its entirety or in part, is strictly prohibited.*

*The content of this document is subject to change without notice.*

## LICENSE ISSUES

The OpenSSL toolkit stays under a dual license, i.e. both the conditions of the OpenSSL License and the original SSLeay license apply to the toolkit.

See below for the actual license texts. Actually both licenses are BSD-style Open Source licenses. In case of any license issues related to OpenSSL please contact [openssl-core@openssl.org](mailto:openssl-core@openssl.org).

### OpenSSL License

Copyright © 1998-2001 The OpenSSL Project. All rights reserved.  
Redistribution and use in source and binary forms, with or without modification, are permitted provided that the following conditions are met:

1. Redistributions of source code must retain the above copyright notice, this list of conditions and the following disclaimer.
2. Redistributions in binary form must reproduce the above copyright notice, this list of conditions and the following disclaimer in the documentation and/or other materials provided with the distribution.
3. All advertising materials mentioning features or use of this software must display the following acknowledgment:  
"This product includes software developed by the OpenSSL Project for use in the OpenSSL Toolkit. (<http://www.openssl.org/>)"
4. The names "OpenSSL Toolkit" and "OpenSSL Project" must not be used to endorse or promote products derived from this software without prior written permission. For written permission, please contact [openssl-core@openssl.org](mailto:openssl-core@openssl.org).
5. Products derived from this software may not be called "OpenSSL" nor may "OpenSSL" appear in their names without prior written permission of the OpenSSL Project.

- 
6. Redistributions of any form whatsoever must retain the following acknowledgment:

“This product includes software developed by the OpenSSL Project for use in the OpenSSL Toolkit (<http://www.openssl.org/>)”

THIS SOFTWARE IS PROVIDED BY THE OpenSSL PROJECT “AS IS” AND ANY EXPRESSED OR IMPLIED WARRANTIES, INCLUDING, BUT NOT LIMITED TO, THE IMPLIED WARRANTIES OF MERCHANTABILITY AND FITNESS FOR A PARTICULAR PURPOSE ARE DISCLAIMED. IN NO EVENT SHALL THE OpenSSL PROJECT OR ITS CONTRIBUTORS BE LIABLE FOR ANY DIRECT, INDIRECT, INCIDENTAL, SPECIAL, EXEMPLARY, OR CONSEQUENTIAL DAMAGES (INCLUDING, BUT NOT LIMITED TO, PROCUREMENT OF SUBSTITUTE GOODS OR SERVICES; LOSS OF USE, DATA, OR PROFITS; OR BUSINESS INTERRUPTION) HOWEVER CAUSED AND ON ANY THEORY OF LIABILITY, WHETHER IN CONTRACT, STRICT LIABILITY, OR TORT (INCLUDING NEGLIGENCE OR OTHERWISE) ARISING IN ANY WAY OUT OF THE USE OF THIS SOFTWARE, EVEN IF ADVISED OF THE POSSIBILITY OF SUCH DAMAGE.

This product includes cryptographic software written by Eric Young ([eay@cryptsoft.com](mailto:eay@cryptsoft.com)). This product includes software written by Tim Hudson ([tjh@cryptsoft.com](mailto:tjh@cryptsoft.com)).

### **Original SSLeay License**

Copyright © 1995-1998 Eric Young ([eay@cryptsoft.com](mailto:eay@cryptsoft.com)) All rights reserved. This package is an SSL implementation written by Eric Young ([eay@cryptsoft.com](mailto:eay@cryptsoft.com)).

The implementation was written so as to conform with Netscapes SSL.

This library is free for commercial and non-commercial use as long as the following conditions are adhered to. The following conditions apply to all code found in this distribution, be it the RC4, RSA, lhash, DES, etc., code; not just the SSL code. The SSL documentation included with this distribution is covered by the same copyright terms except that the holder is Tim Hudson ([tjh@cryptsoft.com](mailto:tjh@cryptsoft.com)).


Copyright remains Eric Young's, and as such any Copyright notices in the code are not to be removed.

If this package is used in a product, Eric Young should be given attribution as the author of the parts of the library used.

This can be in the form of a textual message at program startup or in documentation (online or textual) provided with the package.

Redistribution and use in source and binary forms, with or without modification, are permitted provided that the following conditions are met:

1. Redistributions of source code must retain the copyright notice, this list of conditions and the following disclaimer.
2. Redistributions in binary form must reproduce the above copyright notice, this list of conditions and the following disclaimer in the documentation and/or other materials provided with the distribution.

- 
- 
3. All advertising materials mentioning features or use of this software must display the following acknowledgement:  
“This product includes cryptographic software written by Eric Young (eay@cryptsoft.com)”  
The word ‘cryptographic’ can be left out if the routines from the library being used are not cryptographic related :-).
  4. If you include any Windows specific code (or a derivative thereof) from the apps directory (application code) you must include an acknowledgement:  
“This product includes software written by Tim Hudson (tjh@cryptsoft.com)”

THIS SOFTWARE IS PROVIDED BY ERIC YOUNG “AS IS” AND ANY EXPRESS OR IMPLIED WARRANTIES, INCLUDING, BUT NOT LIMITED TO, THE IMPLIED WARRANTIES OF MERCHANTABILITY AND FITNESS FOR A PARTICULAR PURPOSE ARE DISCLAIMED. IN NO EVENT SHALL THE AUTHOR OR CONTRIBUTORS BE LIABLE FOR ANY DIRECT, INDIRECT, INCIDENTAL, SPECIAL, EXEMPLARY, OR CONSEQUENTIAL DAMAGES (INCLUDING, BUT NOT LIMITED TO, PROCUREMENT OF SUBSTITUTE GOODS OR SERVICES; LOSS OF USE, DATA, OR PROFITS; OR BUSINESS INTERRUPTION) HOWEVER CAUSED AND ON ANY THEORY OF LIABILITY, WHETHER IN CONTRACT, STRICT LIABILITY, OR TORT (INCLUDING NEGLIGENCE OR OTHERWISE) ARISING IN ANY WAY OUT OF THE USE OF THIS SOFTWARE, EVEN IF ADVISED OF THE POSSIBILITY OF SUCH DAMAGE.

The licence and distribution terms for any publically available version or derivative of this code cannot be changed. i.e. this code cannot simply be copied and put under another distribution licence [including the GNU Public Licence].



# 1 Introduction

## 1.1 System requirements

In order to use this software, a TWAIN-compatible image-processing application must first be installed on the computer.

- Operating system
  - Windows 2000 Professional (Service Pack 4),
  - Windows XP Home Edition (Service Pack 2),
  - Windows XP Professional (Service Pack 2),
  - Windows NT 4.0 (Service Pack 6a), Windows Vista Home Basic/Home Premium/Ultimate/Business/Enterprise, and Windows Vista Home Basic/Home Premium/Ultimate/Business/Enterprise x64 edition
- Computer
  - According to the environment recommended for the operating system
- Memory
  - According to the environment recommended for the operating system
- Network
  - Computer with TCP/IP protocol settings correctly specified
- Hard disk
  - 20 MB or more of available space





## 2 Installing the HDD TWAIN Driver

Follow the procedure described below to install the HDD TWAIN driver.

The enclosed User Software CD-ROM is required to install the software.

### 2.1 Installation procedure

#### To install the software

- 1 Turn on the computer and start up Windows.
- 2 Insert the User Software CD-ROM into the computer's CD-ROM drive.  
The CD menu appears.
- 3 Select "HDD TWAIN Driver" from "Scanner Install", and then follow the instructions that appear.  
Installation begins and the necessary files are copied to the computer. When all of the necessary files have been copied to the computer, the Installation Completed dialog box appears.
- 4 Click [Finish].  
The HDD TWAIN driver is installed.

### 2.2 Uninstalling

The HDD TWAIN driver can be uninstalled using either of the following two methods.

- Using "Add or Remove Programs" ("Add/Remove Programs" with Windows 2000)
- Using Setup.exe again



#### **Note**

*Before uninstalling, quit the HDD TWAIN driver.*



## 3 Importing Images

### 3.1 To import images

Images can be imported from the image-processing application compatible with the TWAIN driver.



...

**Note**

*A document from a system user box or a document saved in a box from Copy mode or during computer printing cannot be imported.*



...

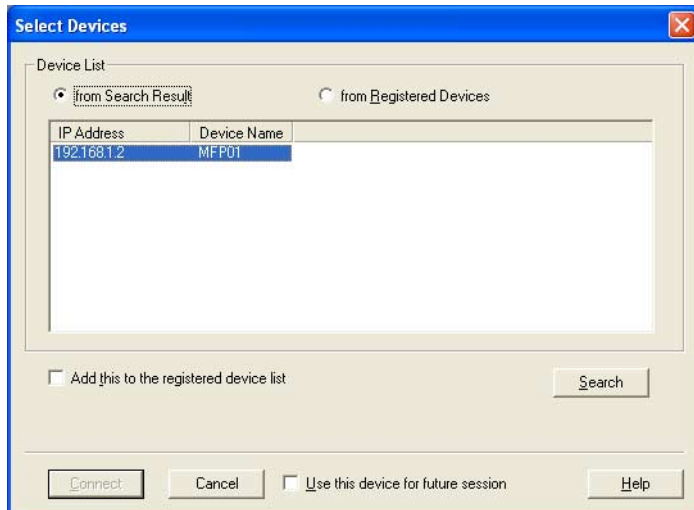
**Note**

*If the multifunctional product is set so that operations cannot be performed on documents saved in boxes, it will not be possible to import the image with the TWAIN driver.*

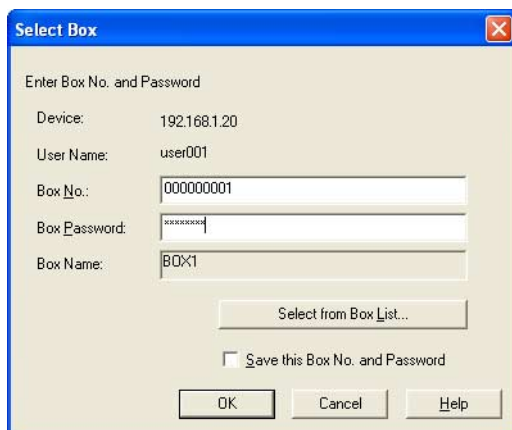
#### Import procedure

- 1 Start up the application to be used for processing the image.
- 2 From the [File] menu, point to [Import], and then click the name of the machine.
  - Depending on the application, the TWAIN driver must be selected. The Select Devices dialog box appears.

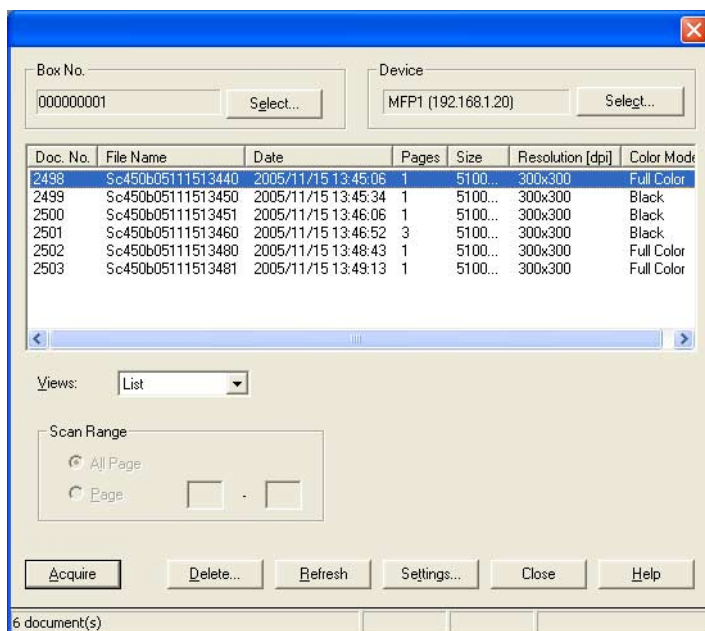
### 3 Select the device to be connected, and then click [Connect].



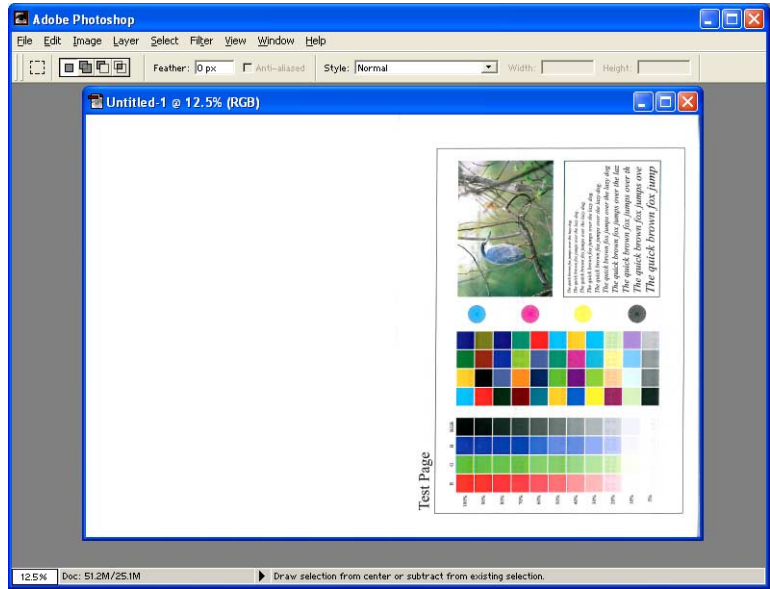
- If user authentication or account track settings have been specified from the device, the corresponding authentication dialog box appears. For details, refer to “With user authentication” on page 3-5 and “With account track” on page 3-7.
- If the multifunctional product is set so that operations cannot be performed by logged on users to documents saved in boxes, the image cannot be imported.  
The Select Box dialog box appears.



- 4 Type in the information for the box.
  - If the “Save this Box No. and Password” check box is selected, the connection device and box information are added to the “Device list”.
  - Specify the box number. Directly enter the box number into the “Box No.” box, or click [Select from Box List] and select the box from the list.
  - In the “Box Password” box, specify the password set for the box.
- 5 Click [OK].
  - For detailed descriptions of the main window, refer to “Main Window Settings” on page 3-8.
 The main window appears.



6 Click a document to select it, and then click [Acquire].



The document data appears in the main window of the software.

## 3.2 With user authentication

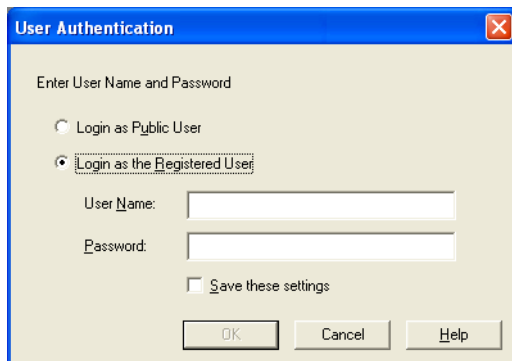
Before the main window appears, the User Authentication dialog box appears.

The user name and password specified for user authentication must be entered.

For details, consult with the machine's administrator.

### To perform the user authentication operation

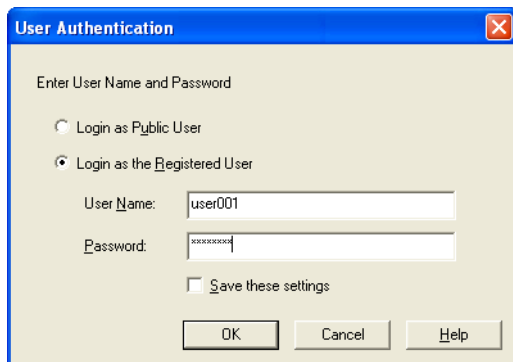
- 1 Select "Login as the Registered User".



- If user authentication was set to allow a public user, this scan function can be used without entering a user name and password. Select "Login as Public User".
- To save the entered information, select the "Save these settings" check box. This allows the machine to be accessed the next time without entering the account name.



- 2 Type in the user name and password, and then click [OK].



- If external server authentication was selected for the user authentication setting on the device and if multiple domains have been registered, enter “@domain\_name” after the user name. For example, “user01@domain” when the user name is “user01” and the domain name is “domain”.

### 3.3 With account track

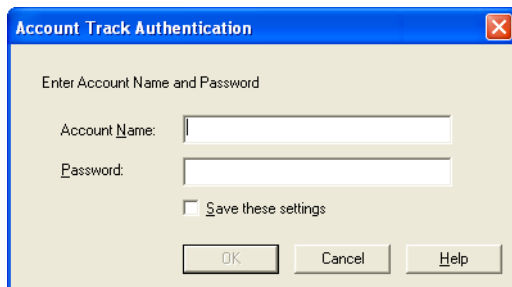
Before the main window appears, the Account Track Authentication dialog box appears.

The account name and password specified for account tracking must be entered.

For details, consult with the machine's administrator.

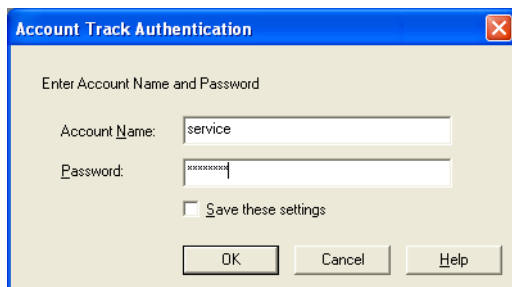
#### To perform the account track operation

- 1 Type in the account name and password.

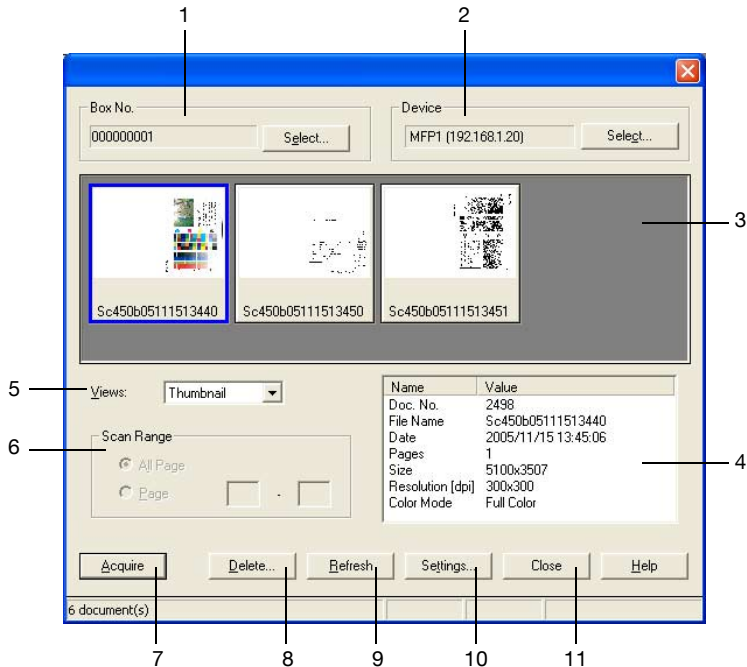


- To save the entered information, select the “Save these settings” check box. This allows the machine to be accessed the next time without entering the account name.

- 2 Click [OK].



# 3.4 Main Window Settings



The following settings and operations are available from the main window.

No.	Item	Description
1	Box No.	Indicates the number of the currently selected box. To select a different box number, click [Select].
2	Device	Indicates the IP address and name of the currently selected device. To select a different device, click [Select].
3		Shows information on the documents saved in the box.
4		Shows information on the currently selected document when thumbnails are displayed.
5	Views	Switches how the documents are displayed.
6	Scan Range	Select whether all pages in the document are scanned or a page range is specified. If "Page" is selected, type in the page numbers.
7	[Acquire]	Begins scanning the selected document.
8	[Delete]	Deletes the selected document.
9	[Refresh]	Updates the information for the documents in the box.

No.	Item	Description
10	[Settings]	Specify settings for the scanned image. For details, refer to “Specifying Settings from the Settings Dialog Box (Scan Tab)” on page 3-12 and “Specifying Settings from the Settings Dialog Box (Image Enhancement Tab)” on page 3-13.
11	[Close]	Closes the window without scanning.

### 3.5 Main Window Views

The data can be displayed in the main window in either of two ways, depending on the use.



#### Reminder

*If the multifunctional product is set so that transmissions of color documents cannot be performed by the user or account that is logged on, color documents or documents containing a combination of color and grayscale pages will not be displayed.*

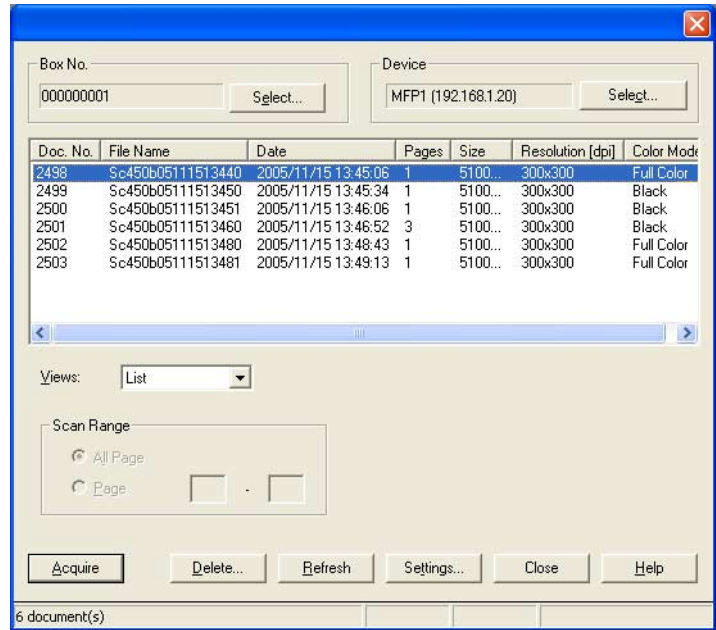


#### Reminder

*Some multifunctional products may not be able to acquire documents in the compact PDF format.*

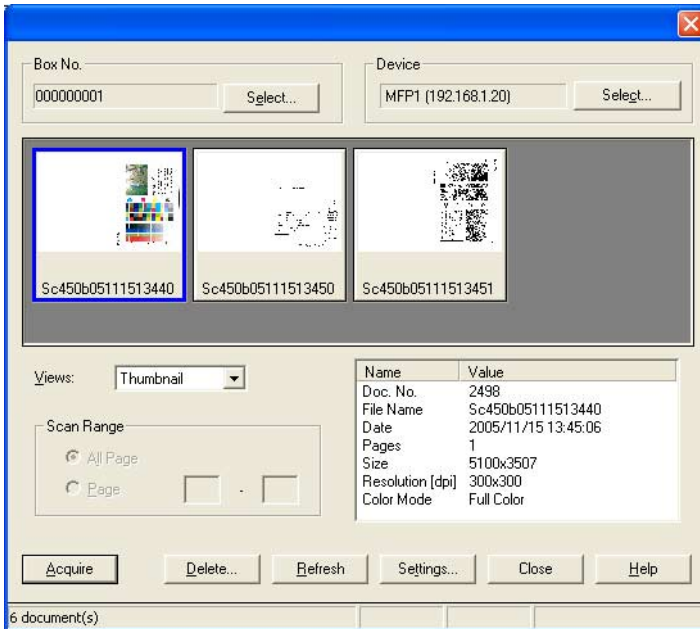
#### List View

- The box number, file name and other information are displayed as a list. Select "List" from the "Views" list to display the information in this way.



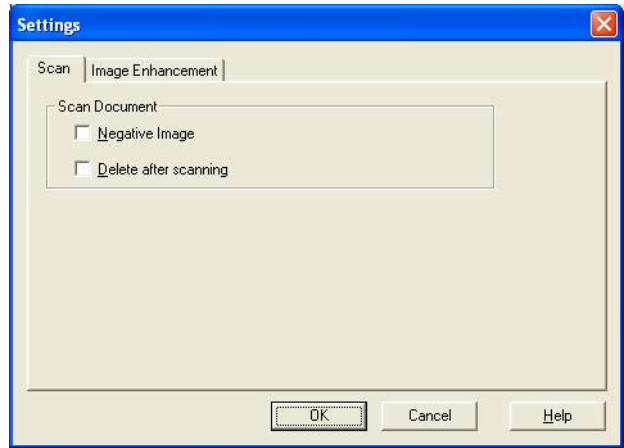
### Thumbnail View

- The first page of the document is displayed as a thumbnail. The document number, file name, date and other information for the displayed thumbnail appear in the lower-right corner of the window. Select “Thumbnail” from the “Views” list to display the information in this way.



### 3.6 Specifying Settings from the Settings Dialog Box (Scan Tab)

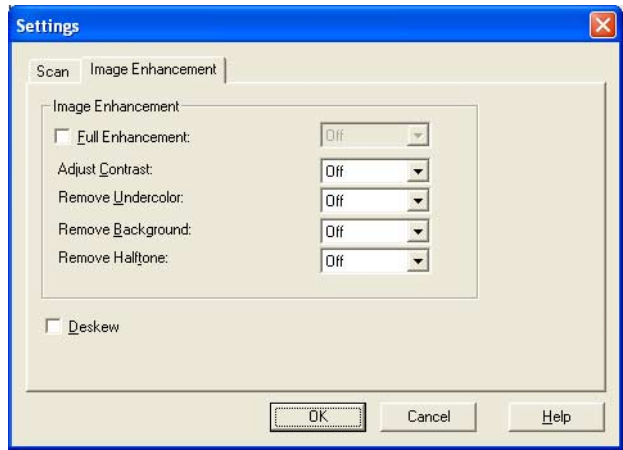
The following settings can be specified. Select the desired options, and then click [OK].



Setting	Description
Negative Image	Select this option for black-and-white (1-bit) data. The black and white areas of the document are reversed in the scan.
Delete after scanning	The document data is deleted from the box after the data is imported to the computer.

### 3.7 Specifying Settings from the Settings Dialog Box (Image Enhancement Tab)

The following settings can be specified. Specify the setting, and then click [OK].



Setting	Description
Full Enhancement	Select to automatically perform all image adjustments that can be set from the Image Enhance tab.
Adjust Contrast	Select the desired amount of contrast.
Remove Undercolor	Select the desired amount of background that is removed.
Remove Background	Select the desired amount of bleed-through that is removed.
Remove Halftone	Select the desired amount of halftones that are removed.
Deskew	Automatically adjusts the tilt of the image.



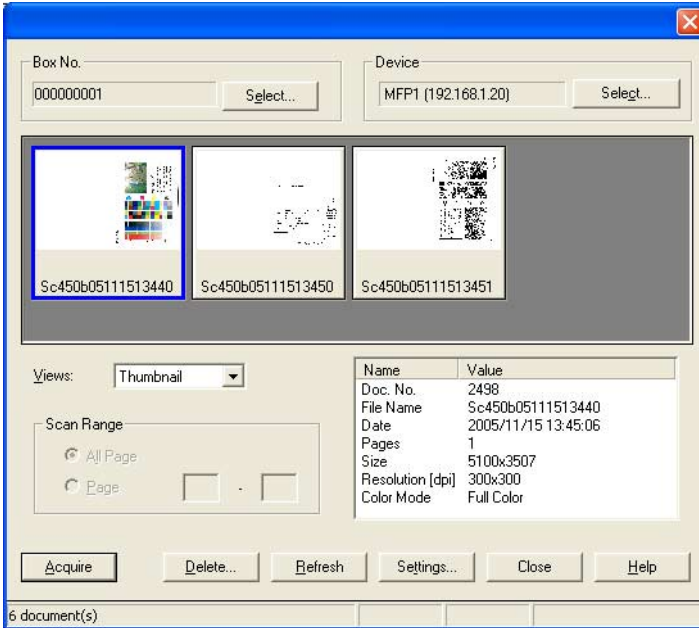


## 4 Selecting Scanning Devices

Search for scanning devices on the network, and then select one. This is used when searching for devices for the first time on the network or when searching for newly added devices.

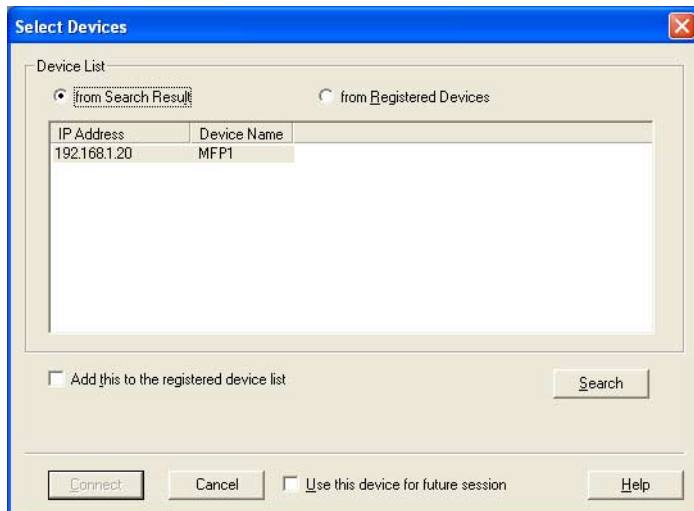
### To select a device

- 1 Display the main window.
  - For details on displaying the main window, refer to “Import procedure” on page 3-1.
- 2 Click [Select] below “Device”.



The Select Devices dialog box appears.

- 3 Select how the device is to be selected. Select “from Search Result”.



The network is automatically searched, and the results are displayed.

- 4 Click the name of a device to select it, and then click [Connect].
- To register the device when a connection is established, select the “Add this to the registered device list” check box.

The Select Devices dialog box is closed and the main window appears again.

This connection is added to the “Device list”.

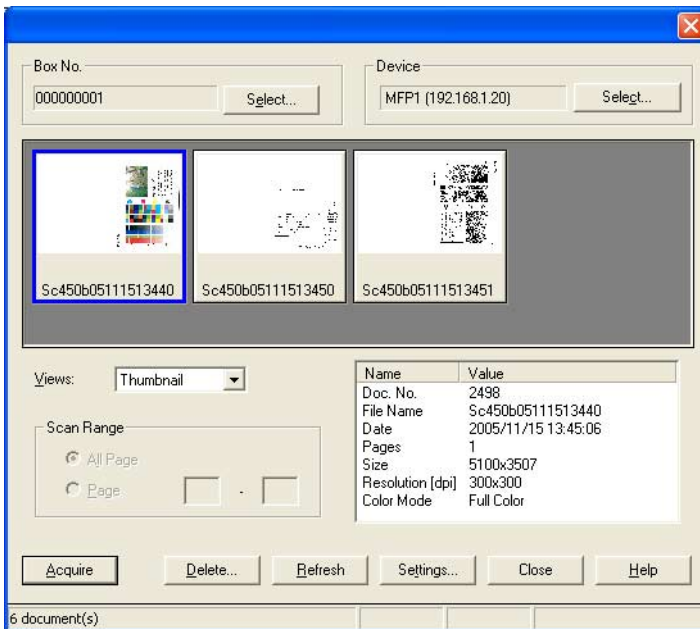
## 5 Registering New Scanning Devices

Devices that are currently connected can be registered in the list. This makes searching quicker when connecting to the device.

A maximum of 20 devices can be registered in the list.

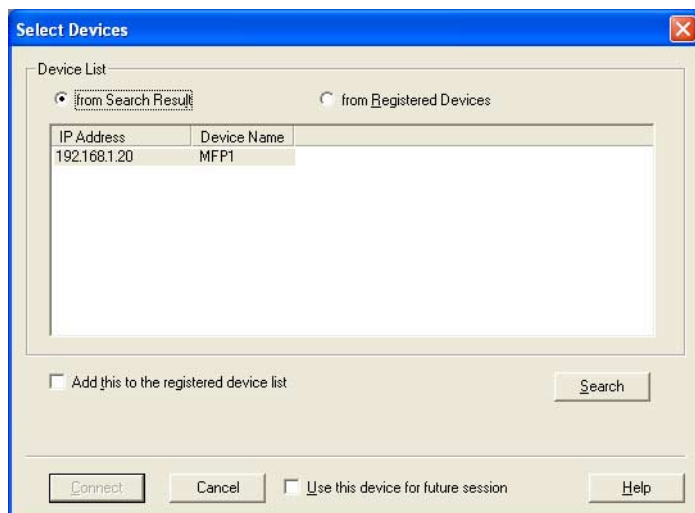
### To register a device

- 1 Display the main window.
  - For details on displaying the main window, refer to “Import procedure” on page 3-1.
- 2 Click [Select] below “Device”.

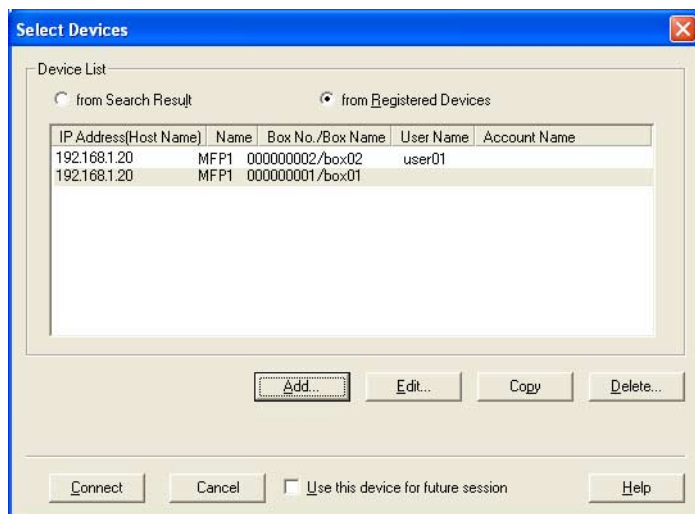


The Select Devices dialog box appears.

### 3 Select “from Registered Devices”.

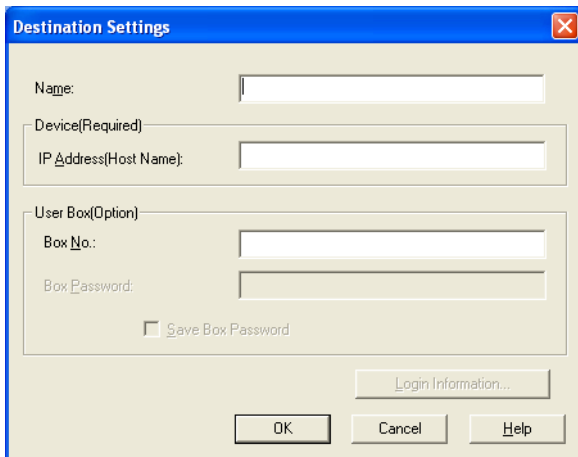


### 4 Click [Add].



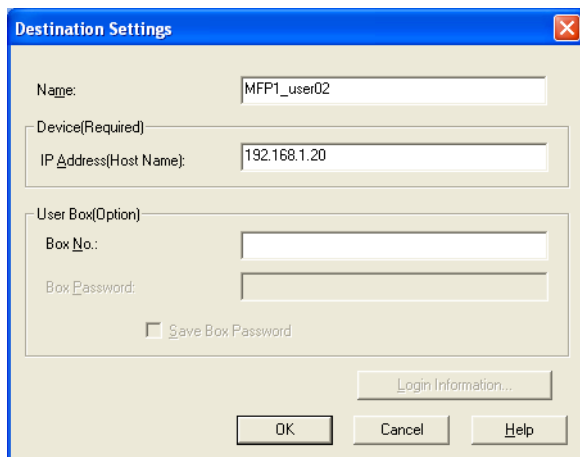
The Destination Settings dialog box appears.

## 5 Type in the device information.



The image shows a 'Destination Settings' dialog box with a blue title bar and a close button (X) in the top right corner. The dialog is divided into several sections. The first section is labeled 'Name:' and contains a text input field. The second section is labeled 'Device(Required)' and contains a text input field labeled 'IP Address(Host Name):'. The third section is labeled 'User Box(Optional)' and contains two text input fields: 'Box No.:' and 'Box Password:'. Below these fields is a checkbox labeled 'Save Box Password'. At the bottom of the dialog, there are three buttons: 'OK', 'Cancel', and 'Help'. A 'Login Information...' button is also present, located above the 'OK' button.

- In the “Name” box, type in the name of the device.
- In the “IP Address (Host Name)” box, type in the IP address or host name for the device.
- In the “Box No.” box, type in the number of the box to be scanned.
- If a password has been specified for the box, type the password into the “Box Password” box. The “Save Box Password” check box must first be selected.
- To save the password for the box, select the “Save Box Password” check box.
- If user authentication or account track settings have been specified, click [Login Information] to view the authentication information.

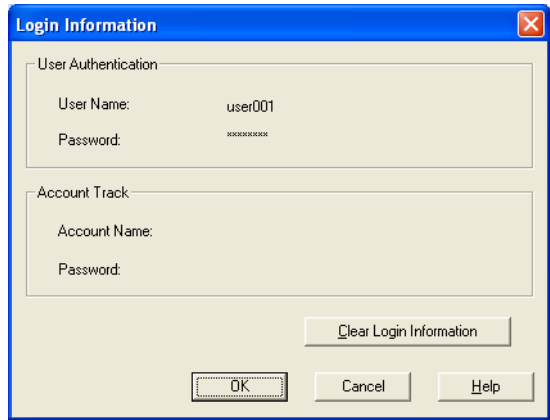
**6** Click [OK].

The image shows a 'Destination Settings' dialog box with a blue title bar and a close button (X) in the top right corner. The dialog is divided into several sections. The first section has a label 'Name:' followed by a text box containing 'MFP1\_user02'. The second section is titled 'Device(Required)' and contains a label 'IP Address(Host Name):' followed by a text box containing '192.168.1.20'. The third section is titled 'User Box(Optional)' and contains two text boxes: 'Box No.' and 'Box Password'. Below these text boxes is a checkbox labeled 'Save Box Password'. At the bottom of the dialog, there are three buttons: 'OK', 'Cancel', and 'Help'. A 'Login Information...' button is also visible above the 'OK' button.

The registered information is added to the list.

### 5.1 Checking Authentication Information

Click [Login Information] in the Destination settings dialog box to display the specified authentication information.



Item	Description
User Authentication	Shows the user name and password specified for user authentication. The password appears as "xxxx".
Account Track	Shows the account name and password specified for account tracking. The password appears as "xxxx".
Clear Login Information	Click to clear the currently specified authentication information.



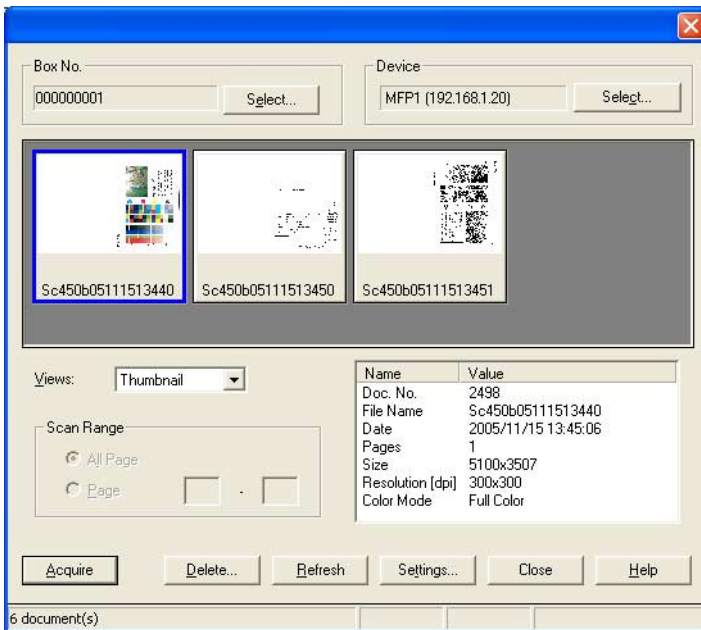


## 6 Changing the Scanned Box

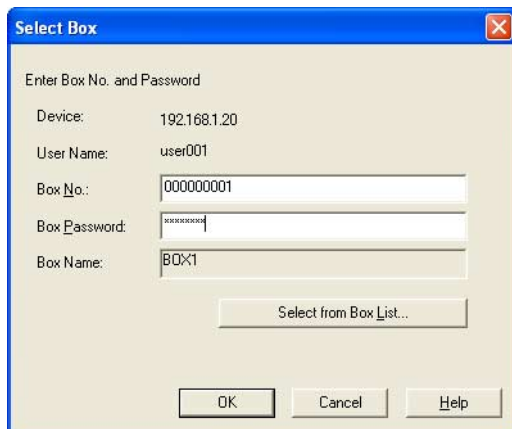
View another box on the device that is currently accessed.

### To change the scanned box

- 1 Display the main window.
  - For details on displaying the main window, refer to “Import procedure” on page 3-1.
- 2 Click [Select] below “Box No.”.



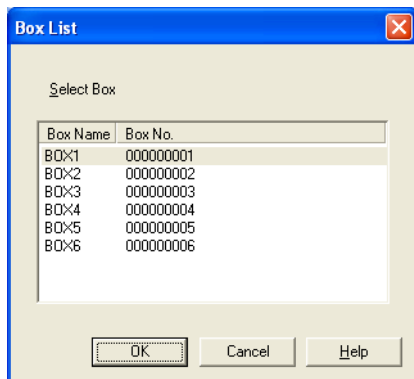
- 3 Type in the information for the box to be scanned.



The 'Select Box' dialog box has a blue title bar and a close button. It contains the following fields and buttons:

- Device: 192.168.1.20
- User Name: user001
- Box No.: 000000001
- Box Password: [masked]
- Box Name: BOX1
- Buttons: OK, Cancel, Help
- A button labeled 'Select from Box List...' is located below the Box Name field.

- To select a box from a list, click [Select from Box List], select the box from the list, and then click [OK].



The 'Box List' dialog box has a blue title bar and a close button. It contains a table with the following data:

Box Name	Box No.
BOX1	000000001
BOX2	000000002
BOX3	000000003
BOX4	000000004
BOX5	000000005
BOX6	000000006

Buttons: OK, Cancel, Help

- 4 Click [OK].
- The data in the selected box is displayed.

